



BEAVERCREEK BULLETIN

© BCCP 2014

Volume 17, Number 1

"<http://www.beavercreekbulletin.org>"

January 2014

Third Annual Christmas Tree Lighting a Success!

The 3rd Annual Hamlet of Beaver Creek Christmas Tree Lighting was held on December 7th at 6:00 p.m. in the Korner Park in downtown Beaver Creek. The lighting went off without a hitch despite the sub-freezing temperature (somewhere in the 20s) brrrr!

There were about 12 children and twenty-five adults who braved the frigid temperatures to have hot cocoa and cookies and watch the tree lighting. The event was also attended by a visit from none other than Beaver Creek's Santa Claus.

Santa handed out glow sticks to kids and adults alike.

There was a tense moment when the tree was lit since it had to be done in two stages, but all went well and the tree looked beautiful!

The Hamlet would like to thank everyone who showed up for the event that marks the beginning of our holiday season.

A special thank you goes to Beaver Creek Cooperative Telephone and their employees Ben Moffit and Phil Lance who assisted again this year with the wrapping of the tree with lights and placing the star at its top. Also, a special thank you to Connie Heintz who donated the use of the proper attire for you know who! And, no thank yous would be complete without thanking the members of the Hamlet who helped with the tree lighting, wreath making and mounting, stringing of the lights and the decorations in the gazebo as well as furnishing the hot refreshments at the event. This was the third year for most of these people. It would not have happened without them. They were Norm Andreen, Bruce Betzer, Chuck Buchert, Brad Carlson, Judy Andreen, Cheryl Boffard, Sharon Carlson, Connie Heintz, Claire Kellogg and Tammy Stevens.

This was a very chilly day with a cold east wind and everyone's hands were getting really cold, not to mention the rest of our bodies when Connie Heintz's son, Blair Heintz, came over with hot cider for everyone. Blair owns Elemental Teas & Coffees, located in the lot in front of Skyle's Drilling. The timing could not have been better. Thank you Blair for thinking of us!

Community Calendar

Back Country Horsemen, Territorial Riders Chapter...

Second Tuesday, 7:00 p.m. Beaver Creek Fire Dept.

This is a brand new BCH chapter, come join us.

For information call 503-637-3878 or see www.bcho.org.

Beaver Creek Committee for Community Planning (BCCP)...

"As needed" basis, Beaver Creek Fire Station at 7:30 p.m.

Beaver Creek Charitable Trust...

Fourth Monday, BCT Henrici Community Room at 7:00 p.m.

Beaver Creek Grange...

First Saturday, Beaver Creek Grange at 1:00 p.m.

Beaver Creek Lions...

First and Third Saturday, Beaver Creek Grange at 7:30 a.m.

Beaver Creek Elementary School PTO...

Second Tuesday 6:00 p.m.

Beaver Creek Telephone Directors Meeting...

First Thursday, Henrici Road Offices at 7:00 p.m.

Boy Scout Troop #139... Mondays, Beaver Creek Grange at 7:00 p.m. Website: <http://www.troop139.net>

Carus Community Planning Org. (CPO)...

Second Thursday, Grandview Baptist Church at 7:00 p.m.

Carus School PTA...

Second Tuesday, School Library at 7:00 p.m.

Clackamas River Water Board Meetings...

Third Thursday, 16770 SE 82nd Dr. at 7:00 p.m.,

Clarkes/Highland Community Planning Org. (CPO)...

First Wednesday of January, February, March, June, September and December, 7:30 p.m. at the Clarkes Grange.

Contact: Susan Nielsen, clarkes-highland@yahoo.com.

Clarkes Parent/Teacher Group...

Third Monday, School Library at 6:30 p.m.

Cub Scout Pack #183...

Den Meetings, Second & Fourth Tuesday, Beaver Creek Elementary School at 6:30 p.m.

Equestrian Trails, North Valley Chapter...

First Tuesday, 6:00 p.m. dinner (optional) followed by 7:00 mtg (Clackamas Elms). For information call 503-632-5610 www.oregonequestriantrails.org or find us on Facebook,

Hamlet of Beaver Creek Board Meetings...

On Thursday, the week before the monthly meeting, at 7:00 p.m. in the Beaver Creek Fire Station Meeting Room.

Hamlet of Beaver Creek Community Meetings...

Fourth Wednesday, Beaver Creek Grange at 7:00 p.m.

Hamlet of Molalla Prairie Board Meetings...

First Tuesday, Fountain Valley Dental conference room, Noon to 2:00 p.m. info 503-789-7179, www.hamletofmolallaprairie.org

Happy New Years!

Hamlet of Molalla Prairie Community Meetings...

Rural Community Meeting, third Wednesday, Molalla
Public Library at 7:00 p.m., www.hamletofmolallaprairie.org

Hamlet of Mulino...

Third Thursday, Mulino Head Start, 13700 S. Freeman Rd.
at 7:15 p.m. For information call 503-632-0202

Oregon City/Beavercreek Mom's Club...

Monthly business meetings. If interested in attending,
please contact ocmoms@yahoo.com

Oregon City Commission Meetings...

First & Third Wednesday, City Hall at 7:00 p.m.

Oregon City Kiwanis...

Every Friday, Berry Park Retirement Community, 13669 S.
Gafney Ln, at 7:00 a.m.

Oregon City School District Board Meetings...

2nd Monday, District Board Room, 1306 12th St., Oregon
City at 7:00 p.m.

**The Beavercreek Bulletin
Published Monthly
In cooperation with the
Beavercreek Committee for
Community Planning
aka BCCP**

The BCCP is a non profit organization formed in 1998 to
inform the citizens of Beavercreek and surrounding areas
of our local news and items of interest
that impact our small rural community.

Ad Rates:

Business Card Ads - \$6.00/mo.
4" x 3.25" Ads - \$9.00/mo.
(other ad sizes available upon request)

"Bulletin" Pick-Up Points:

Kissin Kate's Café
The Beavercreek Grocery
The Korner Park
The UPS Store - Next to the Oregon City Car Wash
Clarks Fire Station
Clarks Grocery & Eatery in Clarks
Beavercreek Animal Hospital

Editor: Sharon Charlson
Telephone: 503-632-6525

The Beavercreek Bulletin is also available online at:

<http://www.beavercreekbulletin.org>

E-Mail:

b_bulletin.info@beavercreekbulletin.org

Beavercreek Oregon's Local News Source Since 1998

**Church Directory
for the Beavercreek,
Carus, Clarks and
Oregon City Areas**

**Beavercreek Baptist Church**

15660 S. Leland Rd.
503-632-7505

E-Mail: bchurch@bctonline.com

Sunday School: 9:00 a.m. & 10:45 a.m. (Youth Only 10:45)

Sunday Worship: 9:00 a.m. & 10:45 a.m.

Youth: Wednesdays from 6:30 - 8:30 p.m.

Ladies Bible Study: Thursdays at 9:00 a.m.

Women's Breakfast: 1st Saturday at 9:00 a.m.

Beavercreek Community Christian Church

Services held at the Beavercreek Grange
503-266-1965 or 503-320-3882

Breakfast: Sunday, 9:30 a.m.

Sunday Worship: 10:30 a.m.

Beavercreek United Church of Christ

"The Ten O'Clock Church"

23345 S. Beavercreek Rd.
503-632-4553

Where God is Still Speaking!
An Open and Affirming Congregation
Pastor: Rev. C. Bunny Oliver

Worship and Sunday School: 10:00 a.m.

Hospitality Hour & Seasonal Potlucks: 11:15 a.m.

AA Meetings: Mondays at 7:30 p.m.

Oregon City Ward 3

The Church of **Jesus Christ** of Latter-day Saints
Henrici Rd between S. Beavercreek Rd and Hwy 213
Bishop Blake Price 503-650-2194

Sunday Meetings: Start at 1:00 a.m.

Women's Enrichment: 3rd Tuesday's, 6:30 p.m.

Youth Activity Night (12-18 yrs): Wednesdays 7:00 p.m.

Bryn Seion Welsh Church

22132 S. Kamrath Rd.
503-630-5317

Sunday Worship: the 2nd & 4th Sunday at 11:00 a.m.

A nondenominational Christian Church - open to all!

Potluck following the service

Carus Community United Methodist Church

22765 S. Hwy 213
503-632-4186

Sunday Worship: 10:45 a.m.

Sunday School (Sept. - June): 9:30 a.m.

Clarks United Methodist Church

18773 S. Windy City Rd.
503-632-7778

Sunday Worship: 9:00 a.m.

Sunday School: 10:30 a.m.

United Methodist Women: 2nd Wed., 9:30 a.m.

Church Directory
for the
Beavercreek, Carus,
Clarkes and Oregon City
Areas continued



First Baptist Church of Oregon City

819 John Adams St.
Oregon City, OR
503-656-3854
1baptistchurch.org

Praise & Worship: Sundays 10:30 a.m.

Kidchurch: Sundays 10:30 a.m.

Middle/High School Youth Groups: Wednesdays, 7 - 8:30 p.m.

Grand View Baptist Church
(Corner of Hwy 213 & Leland Rd.)
503-632-8100

Bible Study: 10:00 a.m.

Main Service: 11:00 a.m.

Sunday Evening: 6:00 p.m.

Wednesday: 7:00 p.m.

* Separate services in English, Spanish & Korean

* All services interpreted for the Deaf

* Over 100 Sunday School Classes

* Transportation and Nurseries Provided

Lower Highland Bible Church

24353 S. Ridge Rd.
503-632-4741
lohibi@bctonline.com

Sunday Worship: 11:00 a.m.

Sunday School: 9:45 a.m.

The Bridge: Clarkes General Store & Eatery, Mondays, 6:30 PM
For add'l info and activities check our Facebook page

Oregon Trail Free Will Baptist Church

14595 S. Henrici Rd.
503-557-8559

Sunday School for all ages: 9:45 a.m.

Sunday Worship: 10:55 a.m.

Sunday Evening Bible Study: 6:00 p.m.

Sunday Youth Group: 6:00 p.m.

Thursday Evening Bible Study: 7:00 p.m.

AWANA Childrens Program: Thursdays, 6:15 p.m.

Prince of Life Lutheran Church

13896 S. Meyers Rd.
Oregon City, OR 97045
503-657-3100

Sunday Worship: 8:30 a.m. and 10:45 a.m.

Sunday School & Learning: 9:40 a.m.

St. John the Apostle Catholic Church

417 Washington St., Oregon City
503-742-8200
www.stjohn-oc.org

Saturday Mass: 5:30 p.m.

Sunday Mass: 8:30 and 10:30 a.m.

Sunday School: During Services

St. Paul's Episcopal Church

822 Washington St.
503-656-9842

Sunday Worship: 7:30 a.m. & 10:00 a.m.

Sunday School: 9:00 a.m.

Wednesday Evening Worship: 7:00 p.m.

AA Meetings: Wednesdays at 7:00 p.m.

Stone Creek Christian Church

21949 S. Hwy 213
503-632-4218

www.Stonecreekonline.com

Sunday School: 9:00 a.m. and 10:30 a.m.

Sunday Worship, Traditional: 8:30 a.m.

Sunday Worship, Contemporary: 10:00 and 11:30 a.m.

* Ministries for Infant thru High School ages during Contemporary Services

Wednesday Nights Live: Dinner at 5:15 p.m., Clubs 6:15 - 8:15

Li'l K Kids Club: for preschool (ages 3 through 5)

KiDMO Kids Club: 1st through 6th grades

SCSM for Youth: 7th through 12th grades

Community Involvement:

Food Distribution: Wednesdays 1 pm to 4 pm

Ministry to Homeless: Third Thursdays

Trinity Lutheran Church & School

16000 S. Henrici Rd.
503-632-5554
www.trinityoc.org

Sunday Services: Traditional, 8:15 a.m.

Contemporary, 11:00 a.m.

Education Hour: Sundays, 9:45 a.m.

Thursday Morning Adult Bible Class: 10:30 a.m.

Youth Group: 7th to 12th grades, 3rd & 4th Sundays, 5:00 p.m.

Quilting Bee: 2nd Saturday, 9:00 a.m. to 2:30 p.m.

J.A.M.: K thru 5th Grade, Wednesdays, 6:30 p.m., September thru May

Men's Prayer Breakfast: Saturdays, 7:30 a.m.

2014 Clackamas County Fair Theme Announced

After a month of accepting entries, and three weeks of voting, the 2014 Clackamas County Fair Theme has been selected. We received over 40 entries during the month of October and narrowed it down to six finalists, which the public voted on during the month of November.

We received over 300 votes, with a very close point spread between three of the themes. With just over 23% of the votes, and winning by a margin of only 2 votes, the 2014 Clackamas County Fair Theme is "We're Serving Up Fun!" This theme was submitted by Susan Sommers of Milwaukie, Oregon. She will receive a Family Season Admission Pass (good for 2 adults and up to 4 children twelve and under) and a Season Parking Pass to the 2014 Clackamas County Fair. Last year the winning theme was submitted by a resident of Aurora.

UCC Food Pantry Community Help Line
503-593-2338

BUEL'S
impressions
PRINTING

David Buel

Red Soils Business Park, Suite 407 Phone: 503 656 7939
408 Beavercreek Rd. Fax: 503 656 7985
Oregon City, OR 97045 buelsprinting@qwestoffice.net

Clackamas Community College January Calendar of Events

January 1 - Scholarship Open Enrollment Begins

Scholarship open enrollment begins Jan. 1 for the 2014-15 school year. CCC scholarship applications will be available online at www.clackamas.edu/Scholarships/. Call Darcie Iven for more information at 503-594-3421 or email scholarships@clackamas.edu.

January 1 - New Years Day Holiday

CCC will be closed in observance of the New Years Day holiday.

January 6 - Winter Term Begins

Winter term classes begin at Clackamas Community College.

January 8 - Auditions for Winter Term Mainstage Production

Auditions for CCC Theatre Department's winter term mainstage production are from 3:00 to 6:00 p.m. in the Osterman Theatre. Auditions are open to the community. Prepare a one-minute monologue or read from the script. For more information call 503-594-3153 or visit www.TheatreCCC.org.

January 8, 15, 22, 29 - Chrysalis: Women Writers

Local author Pat Lichen guides women writers of all levels through discussions of their work. Chrysalis meets from noon to 2:00 p.m. Wednesdays in the Literary Arts Center, Room 220 in Rook Hall. For information, call 503-594-3254.

January 10 - Auditions for Winter Term Student Performance Showcase

Auditions for CCC Theatre Arts Department's winter term Student Performance Showcase are scheduled for from

1:00 to 3:00 p.m. in the Osterman Theatre. The showcase features student directed one-act plays, stand up comedy and comedy improv. Auditions are open to the community. For information call 503-594-3153 or visit www.TheatreCCC.org.

January 18 - Orchard Care Seminar "Think Spring"

Learn about important winter care of fruit-bearing plants. This half-day Saturday seminar features local experts covering a variety of fruit growing techniques. Seminar is from 9:00 a.m. to 12:50 p.m. in the McLoughlin Auditorium. Co-sponsored by the Home Orchard Society. Fee: \$15. For more information, visit www.homeorchardsociety.org or call 503-594-3292.

January 20 - Martin Luther King Jr. Day

CCC will be closed in observance of the Martin Luther King Jr. holiday.

January 21 - Scholarship Kickoff

The Scholarship Kickoff session provides information



CLACKAMAS COUNTY SOIL AND WATER

CONSERVATION
DISTRICT

221 Molalla Avenue, Suite 102
Oregon City, OR 97045
503-210-6000

www.conservationdistrict.org

Now is the time to start planning for spring!

Have too much mud in your barnyard?

Have a mountain of manure?

Have more weeds than grass in your pasture?

We can help!

Call us for technical assistance

Happy New Year from the folks at
Clackamas County Soil and Water
Conservation District

about the new CCC scholarship application, how to write a winning essay, and how to search for external scholarships. No cost to attend. The event is from 6:30 p.m. to 7:30 p.m. in the McLoughlin Auditorium.

January 24 - Careers in Apprenticeship Trades Open House

CCC's Wilsonville campus is hosting a Careers in Apprenticeship Trades Open House for new students. Participants will learn about CCC programs that lead to careers in trades as well as apprenticeship opportunities. Open to current students, veterans, teachers, parents and high school students. Event runs from 8:30 a.m. to 2:30 p.m. No cost to attend. CCC's Wilsonville Campus, 29353 SW Town Center Loop East. Please RSVP to Angie Sandercock at angies@clackamas.eedu or 503-594-0944.

Backyard Burning Allowed

March 1st - June 15th
October 1st - Dec 15th

Call Before You Burn
It's the Law!

503-632-0211

www.clackamasfire.com/documents/fireprevention/openburningregulations.pdf

Health Share of Oregon Will Offer Members a Choice of Eight Dental Health Plans Beginning in Jan 2014

Beginning in January 2014, Health Share of Oregon, the State's largest coordinated care organization, will take a step forward in fully integrated health care delivery by offering the Oregon Health Plan members it serves a choice of eight dental plans.

Good oral health is critical to ensuring physical wellness and preventing serious illness.

Research has long shown a direct connection between oral health and chronic physical ailments, including diabetes, osteoporosis and heart disease. Integrating the dental care system with physical and mental health care delivery has been an important goal of the Oregon Health Authority.

"Our new dental partners have a wealth of knowledge and ideas they bring to our health reform efforts," said Janet L. Meyer, Chief Executive Officer for Health Share. "This is a significant step forward as we work with them to explore how we begin to integrate dental care, whether it's through the delivery of care, shared health information or other means."

While integrating the dental care system into physical and mental health care will include some logistical challenges, such as merging diagnostic codes, the benefits far outweigh the difficulties. Dental care remains the top health care need for low income adults, older adults and children with special health care needs.

"A group of dental care plans have been meeting collaboratively for several months in preparation for CCO integration," said Kevin Boie, Chief Financial Officer for Access Dental Plan. "I am looking forward to working with Health Share and its dental partners to achieve a fully integrated health care delivery system which places oral health as an important component to overall health."

Health Share leadership has long considered the benefits of integrating dental care and dentists have had a voice at Health Share since the CCO was formed in 2012. Dr. Michael Biermann, a practicing dentist in Portland, serves on the Health Share Board of Directors.

Addressing dental care is critical to Health Share's mandate to achieve the Triple Aim of better access to health care and better health outcomes delivered at a lower cost. "It's just too important to wait," noted Meyer.

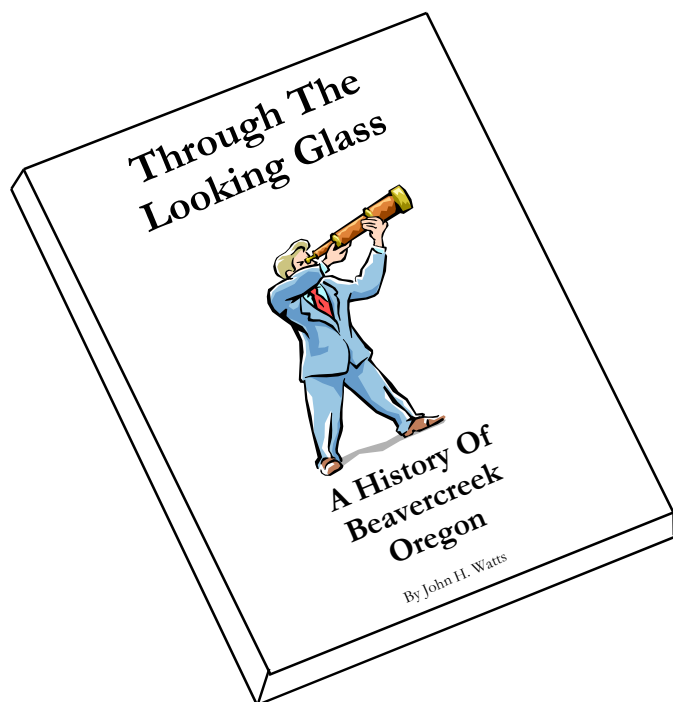
Dental emergencies are a factor in the number of hospital emergency room visits, a critical area to address when reducing health care costs. People diagnosed with mental health or addictions are also significantly more likely to have poor dental health, due to the effects of medications, alcohol and drugs, often in combination with poor oral hygiene. And ensuring preventive dental care for pregnant women and children will help ensure a lifetime of better oral and physical health for Oregonians.

- Eight dental plans -

In January, Health Share is contracting with eight dental care plans to provide care to its over 165,000 members:

- * Access Dental Care
- * Capitol Dental Care
- * CareOregon Dental
- * Family Dental Care
- * Kaiser Permanente Dental
- * Managed Dental Care of Oregon
- * ODS Community Health Dental Plan
- * Willamette Dental Group

Health Share will add Advantage Dental shortly thereafter, but Health Share members are still able to choose Advantage Dental by receiving their dental services directly



Available Now
\$20!

Over 200 pages of the early history of the Beavercreek area with index

ALL Net proceeds to go to the Grange Building Maintenance Fund!

For More Information
E-mail the Bulletin at:

b_bulletin.info@beavercreekbulletin.org

put "Beavercreek History" in the subject field
and your contact info in the body of the message

OR CALL 503-632-6525

CLACKAMAS COUNTY*Pot Hole Hotline***PLEASE CALL 650-3262**

☎ 24-Hour Message Line ☎

through the dental plan until it is fully integrated under Health Share.

- About Health Share of Oregon -

Serving Clackamas, Multnomah and Washington Counties, Health Share of Oregon is a unique community-wide partnership created to ensure quality, cost-effective care for Oregon Health Plan members. The largest of the state's new Coordinated Care Organizations, Health Share provides an integrated community delivery system with the objective of achieving better care, better health and lower costs for the Medicaid population and for the region.

Health Share is made up of 11 founding partners: Adventist Health, CareOregon, Central City Concern, Clackamas County, Kaiser Permanente, Legacy Health, Multnomah County, Oregon Health & Science University, Providence Health & Services, Tuality Health Alliance and Washington County.

59th Annual North Willamette Horticulture Society Meeting To Be Held

The North Willamette Horticulture Society is hosting their annual meeting from January 14 – 16, 2014, at the Clackamas County Fairgrounds: 694 NE 4th Ave. Canby, Oregon. The Organic Crops Section will be on January 14, the Vegetable Section will be on January 15 and the Berry Section will be on January 16. The conference includes a trade show with exhibitors from the local horticulture industry. The meeting features some of the latest information on organic and conventional fresh vegetable and berry production relevant to the Willamette Valley.

Registration information and program agendas are available at <http://nwhortsoc.com/>. General registration includes breakfast (starting at 7:00 a.m.) and lunch. If you have reg-

istration questions or are interested in being an exhibitor for the first time, contact Jan Egli at 503-678-1264 x110.

New Report Finds Landslide Risks Are High For Clackamas County in Portland Metro Area

Mapping and susceptibility study reveals landslide hot spots, but can help reduce risk through awareness, planning, and regulation

The Oregon Department of Geology and Mineral Industries (DOGAMI) has released landslide susceptibility maps that will aid land use and emergency planners in northwestern Clackamas County and could help make residents safer.

The study area contains densely developed land and many landslides. From Milwaukie to Canby and from Wilsonville to Sandy, it's home to thousands of residents and important infrastructure like roads and electrical transmission lines.

Scientists identified 2,885 existing landslides, on top of which sits \$1 billion worth of buildings and land with al-

BEAVERCREEK ANIMAL HOSPITAL

MELANIA R. JOHNSON, D.V.M.



New Hours:

Mon - Thurs - Fri: 8 - 6

Tues - Wed: 9 - 6

Sat: 9 - 1

Closed Sundays

22008 S. Beavercreek Rd.
Beavercreek, Oregon 97004

Telephone: (503) 632-2144
Fax: (503) 632-2241

most 8,000 people. The new study helps us understand the potential scale of future landslides; we can estimate damage and losses. We found that \$7.5 billion of buildings and land with over 20,000 people are in high risk areas for shallow and deep landslides. Moreover, in the event of a large, local crustal earthquake, damage and losses from landslides alone would be high, with up to \$1 billion in losses and about 4,500 buildings moderately to completely destroyed.

To locate landslides, DOGAMI scientists used Lidar, a laser-mapping technology that allows for amazingly detailed and accurate mapping of the earth's surface. From 1964-2009, there were 370 recorded landslides in this area. The authors estimated direct losses in dollars from past landslides ranged from hundreds of thousands to millions in typical winter storm years, with up to tens of millions to \$75 million in severe storm years, such as 1996.

"Clackamas County appreciates having state of the science hazard tools like these new landslide susceptibility maps," says Jay Wilson, the County's hazard mitigation coordinator. "We will work with the State to integrate them

Where Are The Boundaries of The Hamlet?

http://www.beavercreekbulletin.org/Misc/Beavercreek_Hamlet_Boundary_map.pdf

into existing plans and share their benefits to residents for the sake of being aware of the hazard though improved mapping."

These maps and loss estimation products can be used by planning and emergency management officials in emergency response plans, public outreach activities, the selection of appropriate safe-haven sites, and mitigation of critical facilities and infrastructure. For example, by combining the hazard maps with transportation data, potential road blockages can be identified and alternative routes located.

"It's important to remember that these maps are valuable for regional screening, but they aren't for site specific evaluations," says Bill Burns. "However, they give planners

State Fines Bankers Life \$115,000 For Mishandling Long-Term Care Claims

The Oregon Insurance Division has fined Bankers Life and Casualty Company, one of the State's largest long-term care insurers, \$115,000 for improper claims handling.

Bankers Life must also review approximately 26,000 claims involving 2,069 policyholders as far back as Jan.



Ima3D
EVERYBODY LOOKS

Amaze and delight your friends in 3D with a vintage style Reel and Viewer from Image3D, customized with your own pictures and words. Build your reel online with your 2D photos and include 3D text and effects. Or, upload your 3D photography for a fully immersive experience.

The Johnson Family
Extreme Vacation
2012

As low as \$8
in larger quantities

Go to **IMAGE3D.COM** or find us on    

an idea of what's out there and where to focus their efforts."

Funding for the landslide susceptibility study was provided by Clackamas County, Federal Emergency Management Agency, Oregon Emergency Management, Metro, and the cities of Happy Valley, Lake Oswego, Wilsonville, and Oregon City.

To see a preview of DOGAMI Open-File Report O-13-08, Landslide Hazard and Risk Study of Northwestern Clackamas County, Oregon, visit: <http://www.oregongeology.org/pubs/ofr/p-O-13-08.htm>.

Editors Note: The report can be purchased on disc for \$30 each from Nature of the Northwest Information Center, 800 NE Oregon Street, Suite 965, Portland, Oregon, 97232. You may also call 971-673-2331 or order online at <http://www.NatureNW.org>. There is a \$4.95 shipping and handling charge for all mailed items.

1, 2010, to find any other situations where the company owes benefits. Long-term care insurers typically pay bills for services on a monthly basis so one policyholder can have multiple claims.

Also, the Chicago-based company must change practices to ensure proper claims handling in the future.

"The company treated its policyholders unfairly," Insurance Commissioner Laura Cali said. "In addition to the financial penalty, it must find and fix any problems we haven't already uncovered and take steps to assure us that it will meet policyholder obligations going forward."

Other than multistate investigations, this is the second-largest fine the Oregon Insurance Division has issued against a company since 2008. In that year, the division fined Bankers Life \$150,000 for selling unsuitable annuities to clients.

The disciplinary order outlines multiple instances of claims mishandling, including:

Twenty-three instances where the company denied claims without conducting a reasonable investigation. In several claims, for example, Bankers Life needed more information to determine if a policyholder qualified for benefits because the policyholder was mentally impaired or needed help with daily living activities. Instead of requesting the information, Bankers Life initially denied the claims.

Eighteen incidents where the company failed to handle claims promptly. Oregon requires an insurance company to acknowledge or pay claims within 30 days of the date the claim is filed.

Ten instances where the company's unfair practices harmed victims. In most instances, the company charged premium after a policyholder's "waiver of premium" benefit had started. This benefit prohibits the company from charging premium once a person receives covered services for more than 90 days.

In dozens of instances, Bankers failed to tell people whose claims it denied how to contact the Insurance Division or notify them of their right to appeal a decision that they didn't qualify for benefits.

Seven incidents where Bankers Life failed to respond promptly when asked for information about claims.

The company already corrected errors or made refunds to consumers in cases that the Insurance Division investigated. However, it now must ensure no other policyholders were treated unfairly.

Review of past claims

The order requires Bankers Life to hire a division-approved industry professional to review certain claims that were filed from Jan. 1, 2010, through Oct. 31, 2013, including all benefit denials.

The company will also review other claims filed in the same time period at a policyholder's request. Bankers Life will send letters to its policyholders explaining the outcome of the claims it must review, as well as how to request a review on other claims. Policyholders who disagree with the finding can request an arbitrator's review.

Bankers Life now has 60 days to provide the Insurance Division with its detailed plan to review past claims and to submit a corrective plan to ensure proper claims handling in the future.

With nearly \$13 million worth of premium in 2012, Bankers Life is among the largest long-term care insurers in the State. In the Insurance Division's most recent complaint guide, Bankers Life ranks the worst among 20 long-term care companies based on the number of complaints it received measured against its share of the market.

The Insurance Division is part of the Department of Consumer and Business Services, Oregon's largest business regulatory and consumer protection agency. Visit www.dcbs.oregon.gov. Follow DCBS on Twitter: <http://twitter.com/OregonDCBS>. Receive consumer help and information on insurance, mortgages, investments, workplace safety, and more.

Back issues available upon request
while supplies last

Community Reader Board Info Rates

\$1.00/day

To Post Your Organization's Info
Call 503-632-6525

Clackamas County Advisory Committee on Active Transportation Met Dec 10

Clackamas County's Active Transportation Plan (ATP) Public Advisory Committee (PAC) met from 6:30-8:30 p.m., Tuesday, December 10, 2013, in room 119 of the Development Services Building, 150 Beavercreek Rd., Oregon City. The public was invited to attend.

The County's ATP project - focused on walking, bicycling and use of transit - in a 12-month effort to identify and prioritize the primary network of active transportation corridors or routes that connect the communities in Clackamas County, both urban and rural.

The PAC is made up of members of the County's Pedestrian/Bicycle Advisory Committee and other interested residents from throughout Clackamas County. They focus on helping create an active transportation plan that:

- Consists of multi-use paths, bikeways and walkways to encourage people to bicycle or walk for recreation and transportation;
- Provides connections to parks, town centers, businesses and other significant destinations in the County;
- Is a draw for tourists and an opportunity to promote the County as a premier cycling destination in Oregon, and
- Provides accessible, safe active transportation opportunities for people of all ages, abilities and income levels.

Clackamas County Commissioners Adopt Resolution to Seek Mitigation for Proposed Columbia River Crossing

Clackamas County Commissioners have unanimously approved a resolution urging State and Federal officials to require "an updated and thorough evaluation" of the impact on I-205 of traffic diversion due to tolling on the proposed Columbia River Crossing (CRC).

The resolution calls on State and Federal legislators to require a "systemwide approach" to the CRC including a plan to minimize the anticipated traffic congestion along I-205 in Oregon before approving any tolling plan for the CRC.

Traffic congestion is already commonplace along por-

tions of I-205, especially as the highway narrows from the Abernethy Bridge in Oregon City to Stafford Road. Some estimates show that traffic congestion would increase as drivers change their routes to avoid the tolling that is proposed for the bridge that would connect Portland and Vancouver.

A recent analysis indicated these diversions could cause severe traffic gridlock along I-205 as early as 2022.

Commissioners unanimously expressed concern that placing tolls on the CRC would create increased congestion along I-205, but stopped short of opposing the project.

"This is not an anti-CRC vote," said Chair John Ludlow. "This is a pro-Clackamas County vote."

Ludlow said he opposed tolling I-205 as an alternative. "There is no better way to send businesses away from Clackamas County."

"I'm glad the conversation has finally moved to where it needs to be, to the legitimate question of capacity throughout the region," said Commissioner Martha Schrader. "It's about capacity and diversions, not being for or against a particular project. If we don't fix these transportation problems, our economic development will choke."

Expanding capacity for those stretches of I-5 and I-205 in Clackamas County and advocating for funding to do so are among the County's top legislative priorities.

"We need to take congestion and jobs seriously," said Commissioner Paul Savas. "It's of critical importance to address congestion and congestion is everywhere." "Transit is not the solution – it might be a small portion of it, but it won't help freight traffic," he said. "It's not okay to have congestion and we have to dispel the notion that it is."



Scout Troop 139

Scouting For Food

Every year Beavercreek's Scout Troop 139 has the opportunity to help the less fortunate around our community by collecting food for those in need.

Most years, scouting for food has been a 2 weekend event. However, this year it was a one day event.

On Saturday, December 7th, the scouts met at the Grange at 9:00 a.m. where they ate breakfast at the monthly First Saturday Breakfast. The First Saturday Breakfast is an all-you-can-eat

breakfast. This was a good thing since the young men were to go out and brave the extremely cold temperatures to collect cans of food from the community to be donated to the Lions for the Annual Food and Toy Drive that the Beavercreek Lions do each year.

This was an excellent opportunity for the scouts to make a difference in the lives of those in need and a great way to promote and build a positive image of scouting.

The troop went door to door collecting food for 4 hours, logging a total of 36 community service hours.

Despite the fact that the fire fighters were in the same area collecting food just the weekend before, the people in these neighborhoods were very generous and donated a total of 626 lbs of food.

Bench BALL/Prison Ball

On Monday, December 9th, the Troop reserved the gym from 7-9 p.m. at the Beavercreek Elementary School to play bench/ prison ball. Adults were welcome to attend the event. It was noted that they would let the scouts play a while, but that they were sure that at some point the boys would eventually want to pelt them with the balls.

Citizen In the Community Merit Badge Opportunity

On Thursday Dec 12th from 6-8 p.m. at the Ainsworth house in Oregon City scouts were encouraged to attend a presentation and a community interactive event about what the current plan is for the area of land next to the Willamette Falls (The Old Blue Heron Paper Mill). People attending not only saw the proposed framework design, but were able to shape the final proposal. It was a good

The Gleaners of Clackamas County Food Assistance Program

For more information call

503-655-8740

Monday thru Friday 8 am to 3 pm

BAGS - BELTS - FILTERS - PARTS - REPAIR - SALES



14214 Fir Street, Suite G
Oregon City Oregon 97045
MONDAY - SATURDAY

503-657-3058

OREGON CITY VACUUM CENTER

- Specialty Built In Central Vacuums, Canister & Upright Vacuums
- Parts & Repair For Nearly All Makes!
- Buy Any 2 Packs Of Bags Get 1 Free

LINDHAUS®
QUALITY CLEANING EQUIPMENT



Scan code for website. Get
free app at <http://gettag.mobi>



Online Ordering!
www.oregoncityvacuum.com

event for any of the scouts that still needed to fulfill this requirement, or for anybody interested in shaping this portion of the community.

Frisbee Golf

For their December outing the scouts got together on December 14th to play Frisbee golf at one of the free Frisbee golf courses around town.

Game Night

The last meeting of the year was held on Monday, December 16th. This was a game night at the Beavercreek Grange.



Beavercreek Fire Station Calls

The following are the alarms for the Beavercreek and Clarkes response areas for Clackamas County Fire District #1 from November 20 - December 20, 2013. Submitted by Alexis Barbknecht, Clackamas County Fire District #1

- 11/21 - 23:31 - EMS/Rescue - S Upper Highland Rd
- 11/22 - 10:47 - EMS/Rescue - S Beavercreek Rd
- 11/23 - 00:10 - EMS Incident Dispatched & Canceled
En Route - S New Era Rd
- 00:41 - EMS/Rescue - S Kamrath Rd
- 01:18 - EMS Incident Dispatched & Canceled
En Route - S Beavercreek Rd
- 11/24 - 09:57 - EMS/Rescue - S Beavercreek Rd
- 11/25 - 04:45 - Assist invalid - S Schuebel School Rd
- 11/26 - 07:28 - Medical Assist - S Beavercreek Rd
- 18:10 - Medical Assist - S Mote Ln
- 11/27 - 19:07 - Mot Veh Acc/NON-Inj. - S Kamrath Rd/
S Spangler Rd
- 11/28 - 15:54 - Unauthorized Burn - S Dales Ave
- 11/29 - 06:24 - EMS/Rescue - S Hwy 213
- 11/30 - 00:07 - False Fire/Medical Alarm - S Schuebel
School Rd
- 05:14 - Public Service - S Evergreen Dr
- 17:02 - False Fire/Medical Alarm - S Schuebel
School Rd
- 12/01 - 14:58 - Mot Veh Acc/With Inj - S Hwy 213/
S Leland Rd
- 12/02 - 00:45 - Medical Assist - S Ferguson Rd
- 04:38 - EMS/Rescue - S Hwy 213
- 12/03 - 14:30 - EMS Call - S Dales Ave

Dancercize

A Fun Cardio Program
Combining Dance, Weights
And Much More!

Beavercreek Grange
Call for Class Schedule

First Class Free!

Call Shirley

503-655-0839



All You Can Eat Breakfasts

8:00 AM TO 11 AM

Jan 4 - Feb 1 - Mar 1 - Apr 5
May 3 and Jun 7

Adults \$5

Children 5 to 12 \$3.50

Children under 5 are free

Beavercreek Grange

This is your opportunity
to help the Grange raise money
for their Building Fund.
All net proceeds go for the much
needed repairs!

Come Support Our Grange!!!

- 12/05 - 17:59 - False Alarm Incident Dispatched & Canceled
En Route Address - S Farm Pond Ct
- 12/06 - 07:21 - Public Service - S Evergreen Dr
- 08:25 - EMS/Rescue - S Newkirchner Rd
- 10:22 - EMS/Rescue - S Whitney Ln
- 20:04 - False Alarm Incident Dispatched & Canceled
En Route - S Henrici Rd
- 12/07 - 16:35 - Water Problem - S Ferguson Rd
- 21:44 - EMS/Rescue - S Newkirchner Rd
- 12/08 - 01:44 - False Fire/Medical Alarm - S Leland Rd
- 11:33 - Mot Veh Acc/Non inj - S Lower Highland
- 12/09 - 09:30 - False Fire/Medical Alarm - S Somerset
Dr
- 15:45 - EMS/Rescue - S Bluhm Rd
- 12/10 - 18:05 - EMS/Rescue - S Beavercreek Rd
- 12/11 - 15:33 - Water or Steam Leak - S Beaver Glen
Dr
- 16:10 - Water or Steam Leak - S Beaver Glen
Dr
- 18:28 - Medical Assist - S Leland Rd
- 12/12 - 12:00 - Mot Veh Acc/Non Inj - S Henrici Rd/
S Sweetwood Ln
- 15:09 - Building Fire - S Boone Ct

16:07 - Mot Veh Acc/ No Inj - S Hwy 213/
S Carus Rd
16:40 - EMS/Rescue - S Leland Rd

Month At A Glance January

Birthstone: Garnet

Flower: Carnation, Snowdrop

Astrological Signs: Capricorn: Dec 22 - Jan 19
, Aquarius: Jan 20 - Feb 18

Dates To Remember:

New Year's Day - Jan 1st

Amelia Earhart Day - Jan 11th

Ben Franklin's Birthday - Jan 17th

Martin Luther King's Birthday - Jan 20th

Christa McAuliffe Day - Jan 28th

Chinese New Year - Jan 31st

Items of Interest:

Nat'l Eye Care Month

Nat'l Volunteer Blood Donor Month

Nat'l Book Month

12/14 - 03:04 - EMS/Rescue - S Dales Ave

09:23 - Police Matter - S Hwy 213

12/15 - 12:43 - False Alarm Incident Dispatched & Cancelled En Route - S Leland Rd

21:10 - EMS/Rescue - S Lammer Rd

12/16 - 14:24 - EMS/Rescue - S Lower Highland Rd

18:46 - EMS/Rescue - S Beatie Rd

Grange Goings On

December was a very busy month at your Grange. It began with the First Saturday Breakfast that was held as you might guess on the first Saturday of the month. This was a special Christmas Breakfast with the addition of French toast and ham to the all-you-can-eat menu. The event was well attended.

The breakfast was followed by the monthly membership meeting at 1:00 p.m. During the meeting it was announced

by Sharon Charlson, that including the donation for 2013, the sale of "The History of Beavercreek" book has raised \$606.00 for the Grange Building Fund.

On Sunday, December 8th from 1:00 - 3:00 p.m. a memorial service held for Neil Cullison. Neil was well known and active in his community and the Grange for over 50 years. Over one hundred people attended his memorial and shared stories about the life of a very special man who will be missed by those who had the good fortune to meet him.

On this same day at 5:00 p.m. the Grange held their annual Christmas Party Event. It began with a dinner in which the Grange provided turkey, ham, rolls and drinks while the participants brought the side dishes and desserts for the potluck. The contributions to the potluck covered an area of about 15 feet. This did not include all the desserts. After the dinner was the party for the children with Santa. Santa made his appearance right on time much to the delight of some children and wonderment by the smaller children. For some it was their first Santa. Children had their pictures taken with Santa as well as quite a few of the adults. Some of us never grow up (or at least don't want to).

On December 20th the Grange hosted the gift wrapping of the presents collected by the Beavercreek Lions for those less fortunate in our community. The wrapping was preceded by a potluck ham dinner.

On December 21st the Grange hosted a breakfast for the Lions and their helpers who afterward went out to distribute the food and gifts.

December as you can tell was a very busy month for your Grange. The Grange would like to thank everyone who participated in the events and hope to see you in

Got Any Ideas for Articles?

Feel Free to E-Mail or call the paper with your suggestions!

503-632-6525 or b_bulletin.info@beavercreekbulletin.org

2014.

Your Grange members will be back again on January 4th for January's First Saturday Breakfast. As always this is an all-you-can-eat affair so bring your appetites.

Also, mark your calendars for March 15th, a Sunday, for the Grange's Annual St. Patrick's Day Dinner! And May 11th for the Annual Mother's Day Breakfast!

Also on the agenda for 2014 is the making of new curtains for the dining room windows. The ones up now are getting tattered due to light exposure and need to be replaced. Also repairs to the back curtains on the stage will be done.

The Beavercreek Grange #276 meets the first Saturday of the month at 1:00 p.m. at 22041 S. Kamrath Road. One block south of the intersection of S. Beavercreek/Leland and Kamrath Roads in downtown Beavercreek. The community is invited to attend a meeting and learn more about the Grange and its programs.

What the Beavercreek Grange **really** needs in addition

*Show Your Pride and Support
The Hamlet of Beavercreek*

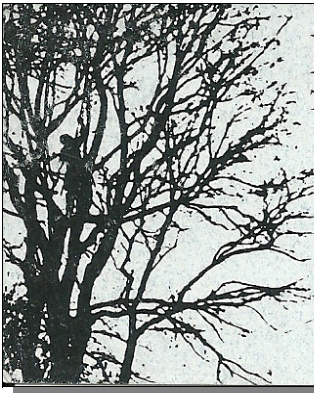
Hats, T-Shirts & Vests



These will be for sale at
Hamlet functions...
Including Monthly Meetings!



Front or back
adhering stickers
FREE!



Fair Weather Inc.
TOTAL TREE CARE
JAMES S. HENDRICKSEN
Certified Arborist #0150
923 Summit
Oregon City, OR 97045
(503) 656-0006
Licensed · Bonded · Insured
Member International Society of Arboriculture

to your attendance at its functions is your participation in the organization! The Beavercreek Grange could use new members. If you are interested in what the Grange is all about you can find the information at the websites below.

** The National Grange founded in 1867, is a non profit, nonpartisan, fraternal organization that advocates for rural America and agriculture. With a strong history in grass-roots activism, family values and community service, the Grange is part of more than 2,100 hometowns across the United States.*

For more information go to <http://www.clackamasgrange.org/beavercreek.html> or <http://www.nationalgrange.org>.

* Taken from the National Grange website.



There was no meeting of the Hamlet of Beavercreek general membership for the month of December as the meeting date fell on December 25th.

There was, however, a meeting of the Board of Directors that met at the Beavercreek Fire station on Thursday, December 19th.

The agenda included 3 land use applications; the first regarding Schuebel School, the second Hal's Construction and the third a home for care renewal. There were approximately 35 citizens in attendance, several who gave testimony to the Board on the first two applications. After deliberations, the Board voted unanimously in support of the Schuebel School application to remove a condition limiting the future use of the property to a school. The Board also voted unanimously in opposition of Hal's Construction application to change the zoning from rural residential to rural industrial. In addition, the Board voted unanimously in support of the home for care renewal application. After completing regular Board business, it adjourned at 9:00 p.m.

Everyone is encouraged to attend the monthly Hamlet Community meetings and the quarterly Town Hall meetings to participate and share ideas and concerns on the issues pertinent to our community. Members 18 years of age and older who live, own a business, or property within

the Hamlet area may vote on Hamlet issues. The Hamlet of Beavercreek Boundary Map is located online at <http://goo.gl/maps/Vr5w1>.

The Community meetings take place on the fourth Wednesday of the month at the Beavercreek Grange on Kamrath Rd at 7:00 p.m. The Town Hall Meetings will occur every quarter. For more information, please call the Hamlet Information Line at 503-632-8370 or visit the Hamlet web site at <http://HamletOfBeavercreek.org>.

Clackamas County Transportation System Plan Approved by County Commission Sets priorities For 20 Years

The Clackamas County Board of Commissioners on December 11, 2013, unanimously approved a 20-year Transportation System Plan (TSP), largely following recommendations from the planning commission and staff.

"This transportation plan has evolved over more than two years with extensive public involvement," said County Commission Chair John Ludlow, "and will help continue to provide the safe and reliable transportation system our residents and businesses need and deserve."

The approved plan includes more than 300 transportation projects that were identified as being needed throughout unincorporated Clackamas County over the next 20 years, though funds are likely to be available for only a small per-

Need A Location For An Event?

The Beavercreek Grange
A Member of
The Beavercreek Community
Since 1896
Has You Covered!

The Grange Is Available For Rent
To Groups Or Individuals

For Info Call Patrico Ramirez
971-235-5370

Support Your Local Grange

centage of the total.

The TSP also includes updated policies to guide development of the projects that:

- Look at the transportation system through a local perspective (rural and urban);
- Specifically address safety, health, equity and sustainability;
- Integrate transportation with land use;
- Address active transportation (bicycling and walking) and accessibility needs;
- Support the movement of freight; and
- Ensure compliance with national and local regulations, including a change of intersection and roadway performance standards.

The TSP was developed over the past two years with extensive public outreach and the leadership of a 22-member public advisory committee. The approved plan will now be drafted into an ordinance for the board to approve early in 2014 as part of the county's comprehensive plan. The draft text is at <http://www.clackamas.us/planning/zdoproposed.html>; the final text will be available at <http://www.clackamas.us/planning/comprehensive.html>.

Mt. Hood Express Bus Service Celebrates Expansion

Mt. Hood Express, previously known as the Mountain Express, held a ribbon cutting ceremony Monday, December 16, 2013, to celebrate an expansion of service to Government Camp, Timberline Lodge and other locations on Mt. Hood. The event was held at Timberline Lodge beginning at 2:00 p.m.

The Mt. Hood Express has increased its service to five scheduled runs daily, seven days per week, and seven runs daily during the winter season. A grant also adds bus service between Sandy and Gresham on Saturday mornings and Sundays to provide connections to regional transit service.

Last summer the Federal Lands Access Program awarded \$476,000 in new grant funding for expansion of the county-operated transit service into the Mt. Hood National Forest, and the City of Sandy. The grant was made possible with cooperation from local businesses who have financially contributed to the project.

Police Blotter

As a public service this paper will start a new column that will inform you of burglaries and other police matters that occur within 5 miles of the Beavercreek Bulletin's office in the downtown area. Be informed. Be safe!

ASSAULT: 1.532 miles

When: December 4, 2013, at 9:42 p.m.

Where: 14600 Block S Kelmsley Dr., Oregon City, OR

SUSPICIOUS PERSON: 1.227 miles

When: December 15, 2013, at 9:21 a.m.

Where: 22400 Block S Beavercreek Rd



OREGON CITY FARMERS MARKET

Downtown WINTER Market

SATURDAYS 10AM - 2PM

Located at 8th St. & Main

NOV 9TH • 23RD	DEC 7TH • 21ST
JAN 4TH • 18TH	FEB 1ST • 15TH
MAR 1ST • 15TH 29TH	APR 5TH • 19TH

ORCITYFARMERSMARKET.COM
503-734-0192



BCT

SUSPICIOUS VEHICLE: 1.163 miles
 When: December 15, 2013, at 4:29 p.m.
 Where: S HWY 213 and S LELAND RD

ASSAULT: 1.539 miles
 When: December 16, 2013, at 4:27 p.m.
 Where: 20200 Block S Danny Ct., Oregon City,

BURGLARY, RESIDENTIAL: 1.507 miles
 When: December 14, 2013, at 2:58 p.m.
 Where: 14500 Block S Kirk Rd., Oregon City, OR

SUSPICIOUS VEHICLE: 2.903 miles
 When: December 14, 2013, at 6:57 a.m.
 Where: 19400 Block S Creek Rd., Oregon City, OR

SUSPICIOUS VEHICLE: 2.468 miles
 When: December 14, 2013, at 1:13a.m.
 Where: S Forest Glen Dr and S Union Mill Rd., Mulino, OR

BURGLARY, COMMERCIAL: 1.404 miles
 When: December 23, 2013, at 1:02 p.m.
 Where: 22600 Block S Beavercreek Rd., Beavercreek, OR

Information Technology Director Named

Dion Baird has been named the new director of the Information Technology Division at Clackamas Community College. The Board of Education approved the new hire at its December meeting.

Baird has 13 years of information technology management experience as project manager and infrastructure architect with an extensive background in network architecture and administration. His skills and expertise include network security, project management, vendor negotiations, consolidation projects and daily IT operations.

He has served as the chief information security officer at the Oregon Department of Education for the past five years, and worked as the department's infrastructure project manager for three years prior. He also worked as a network administrator for the state Department of Administrative Services. Baird started his information technology work while serving in the U.S. Army from 1986-2000. Baird begins work on Monday, Jan. 6.



DEB HEPLER, Agent
 DEB HEPLER AGENCY

719 SOUTH MOLALLA AVE.
 OREGON CITY, OREGON 97045

Office: 503-723-1280
 Fax: 503-656-9911
 Website: www.debhepleragency.com
 24-Hour Claims Reporting: 800-374-1111



Discover the Artist in You! Relaxed Acrylic Painting Class With Victoria Knight, BFA, BA

For the Non-Artist, Beginner,
 Hopeful, Curious, Experienced and
 Advanced

Stroke-for Stroke instruction and your
 painting completed in about 120 minutes!

Gift Certificates Available!

Excellent for Special Events, Office
 Team-Building, Girl's Night, Date Nights,
 Birthdays, Reunions and
 just for the fun of it!

Calendar and local class schedules at
www.Victoriaknightpaintings.com

503-575-0660



Cigarette Tax Increase Kicks In Jan 1

The Oregon Department of Revenue is reminding smokers that the tax on cigarettes will increase on January 1, 2014. Legislation enacted in the special legislative session this fall increases the State tax on a standard, 20-count pack of cigarettes by 13 cents: from \$1.18 to \$1.31.

"Ordinarily, the consumer pays the tax as a part of the price when purchasing cigarettes from an Oregon retailer. Consumers must remember that they are responsible for filing and paying the tax on cigarettes purchased on-line or otherwise brought in from outside the state," said Chris Wytoski, manager of Oregon's tobacco tax program.

Oregon's total tobacco tax revenue, from cigarettes and other tobacco products, is about \$250 million per year. The revenue supports the Oregon Health Plan, the State General Fund, and the Tobacco Use Reduction Account. Portions of cigarette tax revenue are also specifically dedicated to cities, counties, and public transit and, with recent legislation, mental health programs.

"We've been working with retailers and distributors to ensure the appropriate tax is paid on their inventory on January 1," Wytoski said. "Retailers who haven't seen our information about the special one-time tax return they need to file should contact us right away."

Additional information for consumers, retailers, and distributors is available at www.oregon.gov/dor/tobacco.

Nestled in the Woods



On 3.6 Acres
\$259,000

Mulino ML 13234921



When you come to this home you get the feeling of being on vacation. The covered deck lets you enjoy the setting all year long. It has vaulted ceilings of natural wood, a great fireplace with large hearth and heatilator.

Large windows to bring in the light. This home has a full basement could easily be finished.

The Home needs cosmetic changes to make it fit the new owners personality. Over 1800 square feet this 2 bedroom home has room to expand

Bring Your Horse

\$499,900



2003 3BD 2.1 BA 2596 sq. ft. Custom built home on acreage. Covered front porch, slate floor entry, clear fir wrapped windows, vaulted beamed great room with oak floors, fireplace, large windows enjoy territorial views.

Gourmet kitchen w/granite island, Knotty Alder cabinets, Wolf cooktop, convection oven, Asko dishwasher & central vacuum. Barn is 36x36 with loft. Garage is 24x26 with upper storage. RV hookup, water feature, xmas trees and fenced pastures. <http://tiny.cc/31273SGrimm> for a virtual tour.



Frank Hubbard

Office: 503-887-1861
sold@frankhubbard.com
www.frankhubbard.com



On The Mountain

1.3 Acres

\$249,000

ML 13057825



Nested in the wilderness this acreage is fully fenced for your privacy and pets. The cabin is in turn key condition and includes a nice deck and water feature. Newer propane fireplace insert, lots of updates and it even has a loft for storage. The large insulated garage with 1/2 bath is 36x30. All the area in front of the cabin is asphalt to help keep the area clean. All this and a short walk to town.

Springwater Corridor Trail is Now Complete From Portland to Boring

The final segment of the Springwater Corridor Trail - from Rugg Road to Boring Station Trailhead Park - is now complete and the trail is open for public use. The 21-mile paved trail now extends from downtown Portland to Boring.

The final project included widening and paving 2.25 miles of trail surface with asphalt and compacted gravel shoulders; significant drainage improvements; a new bridge deck and railings; improvements at the intersection of Telford and Haley Road and enhanced signage and street crossings.

The Oregon Department of Transportation (ODOT) Transportation Enhancement Program and Metro's voter-approved 2006 Natural Areas Bond Measure provided funding for the project, with additional financial support from Clackamas County Parks. Portland Parks and Recreation owns the trail right-of-way.

A community event celebrating the completion of the trail project is scheduled for February 1, 2014, at the Boring Station Trailhead Park. Visit the project website for details at www.clackamas.us/parks/springwater.html.

OPRD Seeks Comments on Rules That Would Restrict Outdoor Smoking in Oregon State Parks

The Oregon Parks and Recreation Department (OPRD)

**Clackamas Fire Dist #1
Board Meetings
the 3rd Monday of the Month
at Fire Station #5
9339 SE Causey Ave.
Happy Valley, OR 97086
Contact: Karen Strejc
503-742-2646**

is seeking public comment on proposed rule changes that would control smoking in outdoor areas of Oregon State Parks. The proposed changes, which can be found at <http://tinyurl.com/oregonstateparksmoking>, are designed in part to reduce litter and protect natural resources in Oregon's State parks. Smoking is already prohibited in public buildings in the parks. The draft rule change proposes to limit smoking to personal vehicles, tents, and RVs, plus campsites in developed overnight camping areas. The current proposal does not apply to the ocean shore which is managed by OPRD.

Public hearings have been scheduled during January at the following locations:

Date Location:

1/7/2014 - Josephine Community Library, 200 NW C Street, Grants Pass OR

1/9/2014 - Champoege State Heritage Area, Visitor Center, 8239 Champoege Road NE, St. Paul OR

1/14/2014 - Bend Park and Recreation Office, Riverbend Room, 799 SW Columbia Street, Bend OR

1/16/2014 - Newport Recreation Center, 225 Avery St SE, Newport OR

All public hearings begin at 7:00 p.m. and those wishing to make a comment must register with the hearings officer by 7:30 p.m. Comments may also be e-mailed to publiccomment@state.or.us and written comments may be sent to Richard Walkoski, Oregon Parks and Recreation Department, 725 Summer St. NE, Suite C, Salem OR 97301.

Public comments will be accepted until 5:00 p.m. on January 17, 2014. If passed, the rule would become effective March 1, 2014, but state park staff wouldn't start enforcing it until January 2015, and instead spend 2014 educating visi-

tors about the change.

'Solitary Gestures' Opens Jan 13 In CCC'S Alexander Gallery

An exhibition of recent works by sculptor Christopher B. Wagner entitled "Solitary Gestures" opens January 13, 2014, in the Alexander Gallery at Clackamas Community College. An artist's reception will take place on Wednesday, January 15, from noon to 1:30 p.m. in the gallery, with an artist talk at 1:00 p.m.

"Solitary Gestures" showcases approximately 15 sculptural works that explore figurative and animal forms constructed of reclaimed materials such as lumber, hog skin and paint. Wagner's work aims to emphasize the spiritual or intellectual longings of humans. His formal depiction of both human and animal forms utilizes elongation of limbs and necks to convey a yearning to extend beyond ourselves.

Christopher Wagner received his master of fine arts degree from Edinboro University in Pennsylvania. He was recently chosen to participate in a residency pro-

Sign Up For OC Farmers Market Newsletter

To get the Oregon City Farmers Market newsletter go to <http://orcifyfarmersmarket.com>

gram offered in Portland titled "Glean" which gave artists access to reclaim and utilize materials harvested by Metro.

"Solitary Gestures" runs through February 6th. The Alexander Gallery is located in the Niemeyer Center at CCC. It is open Monday through Friday from 9:00 a.m. to 5:00 p.m., with the exception of campus holidays. The exhibition is open to the public and there is no cost to attend.

CCC Names New Dean of Human Resources

The Clackamas Community College Board of Education approved the hire of Patricia Anderson as the dean of Human Resources at its December meeting. Anderson is a human resources professional with 23 years of experience in the field.

She most recently served as Human Resources/Risk Manager in Yamhill County and was an HR analyst with Northwest Senior and Disability Services in Salem from 2001 to 2008. She worked in both Hampton, Va., and Mandeville, Jamaica, in human resources and as a trainer, consultant and guidance counselor prior to her work in Oregon.

Anderson earned a bachelor of arts at the University of the West Indies in Kingston, Jamaica, and a master of business administration from George Fox University. She



The Beavercreek United Church of Christ "The Ten O'Clock Church" FOOD PANTRY

The food pantry at the Beavercreek United Church of Christ, aka, Ten O'Clock Church, is open to those in need. If you find yourself in need of help, please call the number below and leave your name and phone number. Someone will return your call.

This food pantry is open to all who are in need in our community.

503-593-2338

holds a Senior Professional in Human Resources (SPHR) certification and is a trained mediator.

Clackamas Fire Receives \$1.9 Million in Federal Grant Funding

On Friday, November 29, 2013, Clackamas Fire District #1 (CFD1) was officially awarded \$1,919,556 in Federal

SAFER grants (Staffing for Adequate Fire and Emergency Response) assist fire departments by increasing the number of frontline firefighters. The goal is for fire departments to increase their staffing and deployment capabilities thereby enhancing service to the community. THE SAFER program is managed and administered by the Federal Emergency Management Agency's Grant Programs Directorate and supports several specific critical activities: (1) the rehiring of laid-off firefighters, (2) the retention of firefighters facing layoffs, (3) the hiring of new firefighters, and (4) the recruitment and retention of volun-

BUFFALO BILLS SALOON

& KISSIN KATES KATE CAFÉ

21950 S. BEAVERCREEK RD. BEAVERCREEK, OR 97004

T: 503-632-3190

Daily Specials:

Mondays: All You Can Eat Spaghetti \$5.00

Tuesdays: Tacos and Karaoke

Wednesdays: Chef's Choice and Open Mic Night

Thursdays: All You Can Eat Catfish & Surf n' Turf

Fridays & Saturdays: Cherry Smoked Prime Rib

Sundays: Steak Specials

Karaoke Tuesday,
Thursday & Saturday
& DJ Glen on Fridays

Upcoming Events:

February 2 - Super Bowl Party!!! Come root for your team!

February 14 - Valentines Day. We will have a special couples menu available!

Come In And Check Out Our NEW Menu! ALSO...

We have also been busy doing renovations including the new Café expansion. Other changes are in the works to better serve you! Come check us out!

Dont forget our website with upcoming events all the time.

<http://www.buffalobillskissinkates.com>

Holidays are approaching, and yes, we can cater that special event for you. Take a break and relax. We can do the food and clean up!
For information email Kristina at holidayk282@gmail.com or Paul MacKenzie at paulwmackenzie@gmail.com

grant funding to increase fulltime staffing by hiring nine new firefighters. CFD1 is among four fire departments chosen nationwide to receive grant funding after submitting a very comprehensive application and undergoing a subsequent review process. The SAFER Grant, from the U.S. Department of Homeland Security will fully fund these nine firefighter salaries and benefits for a period of two years. The increase in firefighters will allow three community fire stations to enhance emergency response capabilities and increase firefighter safety while CFD1 responds to nearly 17,000 calls for service annually. "Not only will this grant give Clackamas County Fire District #1 the opportunity to hire nine new firefighters, it will also increase firefighter safety and create better response times for the entire community," said U.S. Senator Merkley. "This is great news for Clackamas County." The nine new firefighters are expected to be hired and serving in the community by the spring of 2014.

teer firefighters.

Clackamas Fire District #1 Background Information

Clackamas Fire District #1 is an all hazards fire department, responding to nearly 17,000 calls for service annually. Clackamas Fire is made up of 173 career and 117 dedicated volunteer firefighters serving 178 square miles. The third largest fire department in the State of Oregon, Clackamas Fire is Internationally Accredited by the Commission on Fire Accreditation International and is an industry leader in how emergency services are delivered to the community. For more information about Clackamas Fire, please visit us www.clackamasfire.com.

OMSI Opens Newly Renovated Empirical Theater

The newly renovated Empirical Theater is now open at



WINE TASTING

Sundays

12:00-5:00 PM

Other times by appointment

15640 S. SPANGLER ROAD
503-632-WINE

Enjoy Locally Grown & Produced Wine
forestedgevineyard.com

the Oregon Museum of Science and Industry (OMSI). Named for knowledge gained through observation, the theater's upgrades will allow for expanded programming to further engage and entertain visitors on educational, scientific and cultural topics.

The projection system is entirely digital with 4K technology and 3-D capability, making it possible to show a greater range of content than ever before, including live satellite feeds and Blu-ray. Additionally, OMSI is the first museum in North America--and the first science center in the world--to feature a state-of-the-art Dolby Atmos surround sound system.

"We are delighted to introduce this latest chapter in the evolution of OMSI's giant screen theater," said Russ Repp, OMSI's associate vice president of marketing, retail and sales. "In keeping with our mission of making science exciting and relevant, The Empirical provides audiences the opportunity to experience firsthand some of the most recent developments in cinema technology."

Visitor comfort was also a focus of the renovation as seats were replaced with tables in select upper rows to provide more legroom with the added benefit of a convenient eating place. An expanded food and beverage menu will be implemented in the coming weeks.

The move to digital affords The Empirical new opportunities to highlight alternative science entertainment programming. "We're excited to explore local and national partnerships to expand content in tech-forward, engaging ways," Repp said.

Attention Paddlers 2014-2015 Aquatic Invasive Species Tyvek Tags Now Available Online

Aquatic invasive species prevention permits for paddlers expired December 31st and the Marine Board has several

purchasing options that are perfect to take advantage of when the weather is less-than desirable. Purchasing is easy from the comfort of your home through the Marine Board's online storefront. An annual or two-year Tyvek tag costs a flat, \$5 or \$10, and the Marine Board does not charge an online processing fee. Out-of-state permits for trailered motorboats are also available for online for \$20.

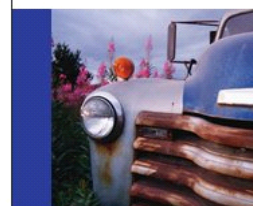
The revenue that is raised from permit sales directly benefits Oregon's efforts to prevent the spread of aquatic invasive species and deter introduction of new species into the State. In 2013, funds from the Aquatic Invasive Species Program were used to build a first-of-its-kind boat wash station at Tenmile Lakes, expand inspection stations around the State and keep the stations open longer. There were 7,436 boat inspections conducted from May through October and 297 boats were found with live weeds, mussels, snails and other organisms. Of the contaminated boats, three boats were carrying mussels and 14 boats had standing water in various compartments.

Any areas with standing water are capable of transporting mussel larvae and weed fragments that can easily contaminate a water body. Law enforcement partners reported a range from 70% to 90% compliance, depending on the region of the State, for people carrying their AIS permit.

Other highlights for 2013 include more signage at boat ramps with the "Clean, Drain, and Dry" message, and completion of a statewide rapid response plan (with practice exercises) for a detection scenario of quagga or zebra mussels.

The 2013 Aquatic Invasive Species Prevention Program Report will be available for download shortly after the first of the year at www.boatoregon.com.

To order your annual or two-year Tyvek tags, or an out-of-state permit for trailered motorboats, visit <https://apps>.



DRIVEABLE DREAMS

Oregon DA3565

FRANK WASHBURN

15391 S TIOGA ROAD
OREGON CITY, OR 97045
f_wash@hotmail.com

503-789-9561 cell
503-632-7449 fax

Located in Beavercreek, OR

Save time, money and the hassle
of 82nd Ave and McLoughlin Blvd

BUY LOCAL

Your neighborhood source for late model,
inexpensive transportation options!

Stop in and see us or look over our inventory on-line at:
www.driveabledreamscars.com

oregon.gov/ecommerce/osmb/Index.aspx.

Beavercreek School News

Parent Teacher Organization Events

Jan 23 - Dinner, 6:00-6:30 p.m.

Bingo 6:30-8:00 p.m.

Feb 21 - PTO Auction, 6:30 p.m.

Coming Soon...

Beavercreek will soon be launching their new website. The website will follow the same format used by other schools in the Oregon City School District.

Title I Parents' Night

All Beavercreek Elementary School parents and guardians are invited to the Oregon City School District Title 1A Parent meeting, being held on Thursday, January 16th from 9:00 – 10:00 a.m. The meeting will be held at the District Office, located at 1417 12th Street.

This meeting will include information about the district's Title 1A programs, specifically focusing on the parent involvement component. There will be opportunity to provide input and ask questions.

For more information please contact Community Involvement Coordinator, Debbie Cole, at 503-785-7836.

Theory Eatery

Cook for Life: Raw Foods and Juicing Tuesday, January 14, 6 - 8 p.m., Cost: \$25

In partnership with OMSI, Portland Monthly presents Cook for Life, a seasonal cooking series focused on cooking for healthy solutions, presented by Regence. This month will focus on Raw Foods and Juicing. Enjoy a small-plate, three-course meal with cooking demonstrations by Chef Abby Fammartino of Abby's Table and nutritional information from the National College of Natural Medicine. This event is for guests 21+ years only. For more info call 503.797.4000 or 800.955.6674.



**Oregon City
High School
Home of the
Pioneers**

January Calendar

Band at the Gator Bowl - Jan 1

Return to School - Jan 7

Boys Rugby Parent Teacher Meeting - Jan 8,
6:45 p.m.

Princeton Review Day 1 - Jan 13, 7:00 p.m.

Talent Show - Jan 16, 7:00 p.m.

No School - MLK Day - Jan 20

Winter Formal Assembly - Jan 23

No School - Grading - Jan 24

SAT Test - Jan 25

Winter Formal - Jan 25

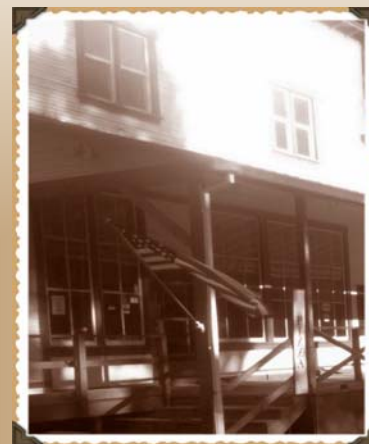
Clarkes General Store & Eatery

25760 S. Beavercreek Rd
Beavercreek, Or 97004
503 632-8337

*Warm, Friendly environment offering convenience, good food,
and a local gathering place since 1925!*

Our newly remodeled, historic building est. 1925 is a hub of activity and a welcoming place to gather and enjoy a bite to eat with friends.

Dine-in for lunch & dinner; enjoy our menu of pizza, burgers, sandwiches and salads, then grab your milk and eggs on the way out!



**Open Mic Nite!!
Saturday,
Jan 11,
8 - 10:30 p.m.**

Clarkes General Store, open Mon-Sat, 8 a.m. - 9 p.m., Sun, 8 a.m. - 8 p.m.

Clarkes Eatery, serving Lunch & Dinner



This information is collected from the Oregon City High School website to keep the community informed of events and items of interest. The Editor



Oregon City Library January Events

Teen Wii Night - Jan 2nd, 6:30-8:00 p.m., Free
Location: Oregon City Public Library, 606 John Adams St., Oregon City

Description: Young adults in grades 6 through 12 are invited to come play Wii and have snacks!

January First Friday Film – The Healthcare Movie - Jan 3rd, 6:30 p.m., Free

Location: Pioneer Community Center, 615 5th St., Oregon City

Description: The national conversation about universal healthcare has literally shut down the federal government. But how did we come to have the system we have in the US? The Healthcare Movie describes Canada's fight for national health insurance and explains the difference between the Canadian system and the US system.

Author Night – Amanda Coplin - Jan 9th, 7:00 p.m., Free
Location: Oregon City Public Library, 606 John Adams St., Oregon City

Description: Portland area author and Whiting Writers' Award winner, Amanda Coplin, wowed readers all over the country with her 2012 debut novel, *The Orchardist*. This Wenatchee, Washington native wove the orchards of her youth into this stunningly beautiful novel which made its way to several top 10 lists.

Elevated Readers Book Club - Jan 16th, 6:15-8:00 p.m., Free

Location: Oregon City Public Library, 606 John Adams Street, Oregon City

Description: Our January title is *The Lemon Tree*: an Arab, a Jew, and the Heart of the Middle East by Sandy Tolan. For more information contact Betty at barmstrong@orcify.org

Backyard Chicken Keeping - Jan 23rd, 7:00 p.m., Free

Location: Oregon City Public Library, 606 John Adams St., Oregon City

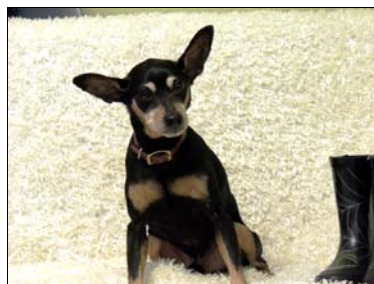
Description: Learn how to keep chickens on an urban

homestead: Sara Tetreault, frugal living expert and 'Go Gingham' blogger presents everything you need to know about backyard chicken keeping. You'll learn how easy it is to keep chickens and whether they're right for you.

Author Night – Phillip Margolin and Gregory Nokes - Jan 30th, 7:00 p.m., Free

Location: Atkinson Church, 710 6th Street, Oregon City
Description: This one-of-a-kind event brings two area authors together to discuss their books which both relate to slavery in early Oregon. Phillip Margolin, author of best-selling and award winning legal thrillers switches to the historical setting of 1860s Oregon in *Worthy Brown's Daughter*, based loosely on real events. R. Gregory Nokes looks at Oregon's early history with slavery from another point of view and another legal case. His book, *Breaking Chains: Slavery on Trial in the Oregon Territory* is the story of the people behind Holmes vs. Ford, a landmark Oregon case and the only slavery case ever brought in Oregon courts. Enjoy both of these remarkable authors as they discuss the shared topic of slavery in Oregon in the historic Atkinson Church.

Our 4 Legged Friends



My Name
is
"DUTCH"
and I'm
available for
Adoption!

Hello... my name is "Dutch" and I'm available for adoption. I'm a Miniature Pinscher.

I'm a 8+ year old neutered male and I weigh approximately 10 to 30 lbs. As you can see I'm black and tan in color with erect ears and a docked tail.

Here is what I have to say for myself!

"If you are looking for a little treat, you found me - Dutch. I am a Min-Pin through and through. We are known for being proud, courageous, and loyal. I love my soft bed, and I love tasty snacks. I may be shy at first, so a gentle approach and a yummy treat is best when we first meet. I hope to meet you soon."

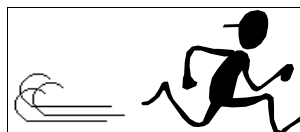
For more information on me or other dogs available for adoption, please call the shelter at 503-655-8628 or come by for a visit and a little one-on-one. You can also see us at the Clackamas County Dog Control website at:

<http://www.clackamas.us/k9man/adoptpet.jsp>

The shelter is located at 13141 S.E. Hwy 212 in Clackamas, Oregon. I'm available from 12:30 to 4:30 p.m., Thursday thru Monday. I'd sure love to get the chance to meet you. "DUTCH"

Issues of the
Beavercreek
Bulletin
Now Available in
PDF Format
Online!

www.beavercreekbulletin.org



See you next month... The Editor!