



BEAVERCREEK BULLETIN

© BCCP 2009

Volume 12, Number 08

"<http://www.beavercreekbulletin.org>"

August 2009

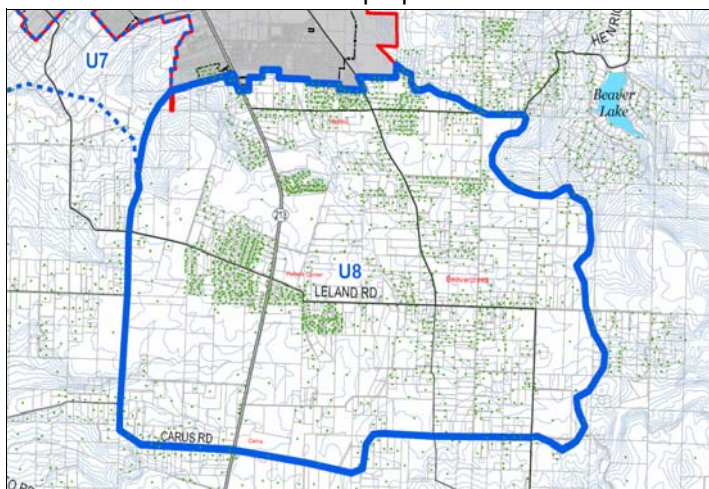
Déjà vu

If at first you don't succeed... try, try again!

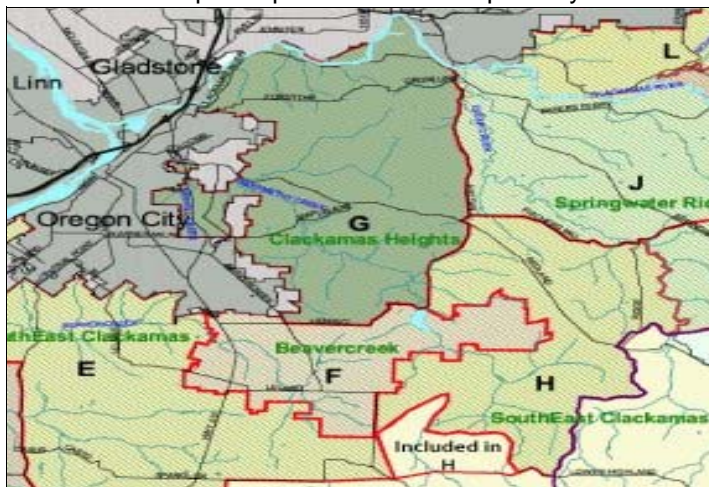
Imagine everyone's astonishment when the County Planning staff presented what is now known as area U8 at the July 14, 2009, meeting of the Urban and Rural Reserves Policy Advisory Committee.

This information was shared with the Beavercreek community at the July 22, 2009, Hamlet Community Meeting.

What did we learn? We learned that the area including all the 4,880 acre area in the blue lasso (shown in the picture below) is being considered for Urban Reserve status. This includes most of Beavercreek proper!



The County Planning staff has been reluctant to discuss just how this came about. It was not discussed at any of the meetings. It just showed up on the 14th of July with no explanation. This should NOT be a secret. This is SUPPOSED to be a public process with transparency!



Community Calendar

Beavercreek Committee for Community Planning (BCCP)...

"As needed" basis, Beavercreek Fire Station at 7:30 p.m.

Beavercreek Charitable Trust...

Fourth Monday, BCT Henrici Community Room at 7:00 p.m.

Beavercreek Grange...

Second Saturday, BeavercreekGrange, potluck at 6:00 p.m. meeting at 7:00 p.m.

Beavercreek Lions...

First and Third Saturday, Beavercreek Grange at 7:30 a.m.

Beavercreek Elementary School PTO...

Second Tuesday 6:00 p.m.

Beaver Creek Telephone Directors Meeting...

First Thursday, Henrici Road Offices at 7:00 p.m.

Boy Scout Troop #139... Mondays, Beavercreek Grange at 7:00 p.m. Website: <http://www.troop139.net>

Boy Scout Troop #745...

Mondays, Grandview Baptist Church at 7:00 p.m.

Carus Community Planning Org. (CPO)...

Second Thursday, Stone Creek Christian Church, 7:00 p.m.

Carus School PTA...

Second Tuesday, School Library at 7:00 p.m.

Clackamas River Water Board Meetings...

Third Thursday, 16770 SE 82nd Dr. at 7:00 p.m.,

Clarks/Highland Community Planning Org. (CPO)...

First Wednesday of January, February, March, June, September and December, 7:00 p.m. Call Gary Hartt for more information at 503-632-6955.

Clarks Parent/Teacher Group...

Third Monday, School Library at 6:30 p.m.

Cub Scout Pack #183...

Den Meetings, Second & Fourth Tuesday, Beavercreek Elementary School at 6:30 p.m.

Pack Meeting, Third Tuesday, Beavercreek Grange at 7:00

Cub Scout Pack #197 (Carus School area)...

For information, call 503-632-7358 or 503-632-4382

Equestrian Trails, North Valley Chapter...

First Tuesday, 6:00 p.m. dinner followed by a 7:00 meeting. For information call 503-632-3258

Hamlet of Beavercreek Community Meetings...

Fourth Wednesday, Beavercreek Grange at 7:00 p.m.

Hamlet of Beavercreek Town Hall Meetings (Qtrly)...

To be announced

Hamlet of Mulino...

Third Thursday, Mulino Airport, OPA Bldg at 7:15 p.m. For information call 503-632-0202

Oregon City/Beavercreek Mom's Club...

Monthly business meetings. If interested in attending, please contact ocmoms@yahoo.com

Oregon City Commission Meetings...

First & Third Wednesday, City Hall at 7:00 p.m.

Oregon City Kiwanis...

Every Friday, Berry Park Retirement Community, 13669 S. Gafney Ln, at 7:00 a.m.

Oregon City School District Board...

2nd Monday, District Board Room at 7:00 p.m.

**The Beavercreek Bulletin
Published Monthly
In cooperation with the
Beavercreek Committee for
Community Planning
aka BCCP**

The BCCP is a non profit organization formed in 1998 to inform the citizens of Beavercreek and surrounding areas of our local news and items of interest that impact our small rural community.

Ad Rates:

Business Card Ads - \$6.00/mo.

4" x 3.25" Ads - \$9.00/mo.

(other ad sizes available upon request)

"Bulletin" Pick-Up Points:

Kissin' Kate's Café

The Beavercreek Grocery

The Corner Park

The UPS Store - Next to the Oregon City Car Wash

Clarkes General Store & Eatery

Beavercreek Animal Hospital

Editor: Sharon Charlson

Telephone: 503-632-6525

Fax: 503-632-6525

The Beavercreek Bulletin is also available online at:

<http://www.beavercreekbulletin.org>

E-Mail:

b_bulletin.info@beavercreekbulletin.org

The area marked as area F (in the second map on the previous page) along with parts of area G and H were studied separately, not as one.

Areas E, G and H were deemed for Rural designation partly because of the stream corridors within their boundaries. Area F, the Beavercreek Rural Center, that includes those same streams (including their headwaters) was not being judged with the same criteria.

Beavercreek had the same problem back when METRO wanted to expand the Urban Growth Boundary in 1997. The Beavercreek area was thrown in at the last minute with a request from Oregon City and by METRO Councilman John Kvistad. The areas involved were:

Area 25 - 1,048 acres from Oregon City's southern bound-

**Church Directory
for the Beavercreek,
Carus, Clarkes and
Oregon City Areas**



Beavercreek Baptist Church

15660 S. Leland Rd.

503-632-7505

E-Mail: bchurch@bctonline.com

Sunday School: 9:00 a.m. & 10:45 a.m. (Youth Only 10:45)

Sunday Worship: 9:00 a.m. & 10:45 a.m.

Youth: Wednesdays from 6:30 - 8:30 p.m.

Ladies Bible Study: Thursdays at 9:00 a.m.

Women's Breakfast: 1st Saturday at 9:00 a.m.

Beavercreek Community Christian Church

Services held at the Beavercreek Grange

503-266-1965 or 503-320-3882

Breakfast: Sunday, 9:30 a.m.

Sunday Worship: 10:30 a.m.

Beavercreek United Church of Christ

"The Ten O'Clock Church"

23345 S. Beavercreek Rd.

503-632-4553

Where God is Still Speaking!

An Open and Affirming Congregation

Pastor: Rev. C. Bunny Oliver

Worship and Sunday School: Sundays at 10:00 a.m.

Youth Fellowship : Sundays at 4:00 p.m.

Beavercreek Ward

The Church of Jesus Christ of Latter-day Saints

Henrici Rd between S. Beavercreek Rd and Hwy 213

503-656-3192 Bishop Karl Brady

Sunday Meetings: Start at 9:00 a.m.

Women's Enrichment: 3rd Tuesday's, 6:30 p.m.

Youth Activity Night (12-18 yrs): Wednesdays 7:00 p.m.

Bryn Seion Welsh Church

22132 S. Kamrath Rd.

503-630-5317

Sunday Worship: the 2nd & 4th Sunday at 11:00 a.m.

A nondenominational Christian Church - open to all!

Potluck following the service

Carus Community United Methodist Church

22765 S. Hwy 213

503-632-4186

Sunday Worship: 10:45 a.m.

Sunday School (Sept. - June): 9:30 a.m.

Clarkes United Methodist Church

18773 S. Windy City Rd.

503-632-7778

Sunday Worship: 9:00 a.m.

Sunday School: 10:30 a.m.

United Methodist Women: 2nd Wed., 9:30 a.m.

Back issues available upon request
while supplies last

Church Directory for the Beavercreek, Carus, Clarkes and Oregon City Areas continued



Grand View Baptist Church
(Corner of Hwy 213 & Leland Rd.)
503-632-8100

Bible Study: 10:00 a.m.
Main Service: 11:00 a.m.
Sunday Evening: 6:00 p.m.
Wednesday: 7:00 p.m.
* Separate services in English, Spanish & Korean
* All services interpreted for the Deaf
* Over 100 Sunday School Classes
* Transportation and Nurseries Provided

Lower Highland Bible Church
24353 S. Ridge Rd.
503-632-4741

Sunday Worship: 11:00 a.m.
Sunday School: 9:45 a.m.
The Bridge: Clarkes General Store, Tuesdays, 6:05 p.m..
Vacation Bible School: Aug 3-7, 6:00 to 8:45 p.m.

Oregon Trail Free Will Baptist Church
14595 S. Henrici Rd.
503-557-8559

Sunday School for all ages: 9:45 a.m.
Sunday Worship: 10:55 a.m.
Sunday Evening Bible Study: 6:00 p.m.
Sunday Youth Group: 6:00 p.m.
Thursday Evening Bible Study: 7:00 p.m.
AWANA Childrens Program: Thursdays, 6:15 p.m.

Prince of Life Lutheran Church
13896 S. Meyers Rd.
Oregon City, OR 97045
503-657-3100

Sunday Worship: 8:00 a.m. and 10:30 a.m.
Sunday School & Learning: 9:15 a.m.

St. John the Apostle Catholic Church
417 Washington St., Oregon City
503-742-8200
www.stjohn-oc.org

Saturday Mass: 5:30 p.m.
Sunday Mass: 8:30 and 10:30 a.m.
Sunday School: During Services

St. Paul's Episcopal Church
822 Washington St.
503-656-9842

Sunday Worship: 7:30 a.m. & 10:00 a.m.
Sunday School: 9:00 a.m.
Wednesday Evening Worship: 7:00 p.m.
AA Meetings: Wednesdays at 7:00 p.m.

UCC Food Pantry Community Help Line
503-724-1095

Stone Creek Christian Church
21949 S. Molalla Ave.
503-632-4218

Sunday School: 9:00 a.m. and 10:30 a.m.
Sunday Worship, Traditional: 9:00 a.m.
Sunday Worship, Contemporary: 10:30 a.m.

"Ministries to all ages" New Preacher, effective March 08

Trinity Lutheran Church & School
16000 S. Henrici Rd.
503-632-5554

Sunday Services: 8:15 a.m. & 11:00 a.m.
Education Hour: 9:45 a.m.
Thursday Morning Adult Bible Class: 10:30 a.m.
Whitewater Sundays: 6:30 p.m.
Preschool thru 3rd grade: Begins September 3
Children's Choir: Tuesday, 6:30 p.m.
Chimetone Choir: Wednesday, 6:45 p.m.
Quilters Guild: Mon 9:30 a.m.
Life With God: Tuesday, 6:45 p.m.
Youth: Tuesday, 6:30 p.m.
Men's Prayer Breakfast: Saturday, 7:30 a.m.

ary to approximately Wilson Road and
Area 26 - 2,144 acres from approximately Wilson Road
south to approximately Carus Road.

Like I said... Déjà vu!

This is not acceptable by a long shot. If the County and METRO are going to make decisions that impact peoples' lives, they should be up front about it.

There was a process that was to be followed. County Planning staff did not follow that process. Last minute changes that are grossly different from what has been discussed in the public forum and back room deals are inexcusable!

The fact that this change was made just days prior to the last meeting where possibly the final public input could be taken (July 28th) is irresponsible. It does not give time for the public to respond, but perhaps that was the intent.

Take ownership of your actions and take the consequences. Apparently, our elected officials and County staff who are supposed to work for the public are not up to the task. There should be an investigation into who is responsible for this abuse.

The original map in which the areas designated as "F" and parts of G and H were to be studied for inclusion in EITHER the Rural or Urban Reserves has been totally redrawn. It is now U8!

Do you see the difference? No? I'm not surprised. It is virtually the same area studied in 1997!

Not only is the lack of transparency in this process problematic, but so is the blatant disregard of the process. Oregon City has long eyed Beavercreek for its tax base since the City is basically bankrupt. I'd bet money that their fingerprints are all over this travesty.

EDITORS NOTE (Some background):

The U&RR process looks at areas and compares them to two sets of factors: Urban and Rural. A specific area may compare favorably to both sets of factors. At this point, the County PAC is selecting areas that meet the Urban factors, the consideration of areas for Rural factors having concluded. When a specific area can meet both

Urban and Rural factors, the two competing interests must be weighed against each other. The County PAC makes recommendations to the Board of County Commissioners. The BCC makes recommendations to the METRO Regional Reserves committee. The MRR committee makes recommendation to the Core-4, consisting of Commissioner Charlotte Lehan, Commissioners from Multnomah and Washington counties, and a METRO Council member. The Core-4 makes the "final" decision, but it will probably wind up before LUBA and the courts.

Vacation Bible School at Beavercreek United Church of Christ

The 2009 Vacation Bible School at Beavercreek United Church of Christ, located at 22345 S. Beavercreek Road in Beavercreek, Oregon will be held from August 10 - 14 from 9:00 a.m. to Noon.

The theme for 2009 is FROG CAMP Japan! F.R.O.G.

stands for Fully Rely on God.

This year we'll be exploring the parables of Jesus, the culture of Japan and learning how to keep our earth healthy.

Our program includes Bible stories, games, music and dance, healthy snacks and crafts.

There is no fee and all children ages 3 - 12 are welcome to attend.

Register by phone at 503-781-3718. Speak to Pastor Bunny or leave a message. You may also register your child the first day between 8:30 and 9:00 a.m.

**The Gleaners
of
Clackamas County
Food Assistance Program**
For more information call
503-655-8740
Monday thru Friday 8 am to 3 pm



Mosquitos Decreasing

The number of adult mosquitoes found in the traps the last week of July has increased. The number of

larval mosquitoes collected has decreased for the non-vector and vector species. Areas that have standing water with high numbers of larvae mosquitoes are treated and monitored on a regular basis.

Our treatment goal is to reduce the number of larval mosquitoes which reach the adult stage.

There has been an increase in adult vector species collected. The vector species are being monitored by re-trapping in the identified areas. We have seen higher adult counts of vector species in Wilsonville, Milwaukie, Clackamas, Oregon City and Molalla. West Nile tests were performed on each vector species from each trap site meeting required minimum numbers for testing. All tests have been negative.

The calls about dead Corvids (crows and jays) have been very slow.

Reminder: Mosquitoes are hungry – protect yourself with a product containing DEET.

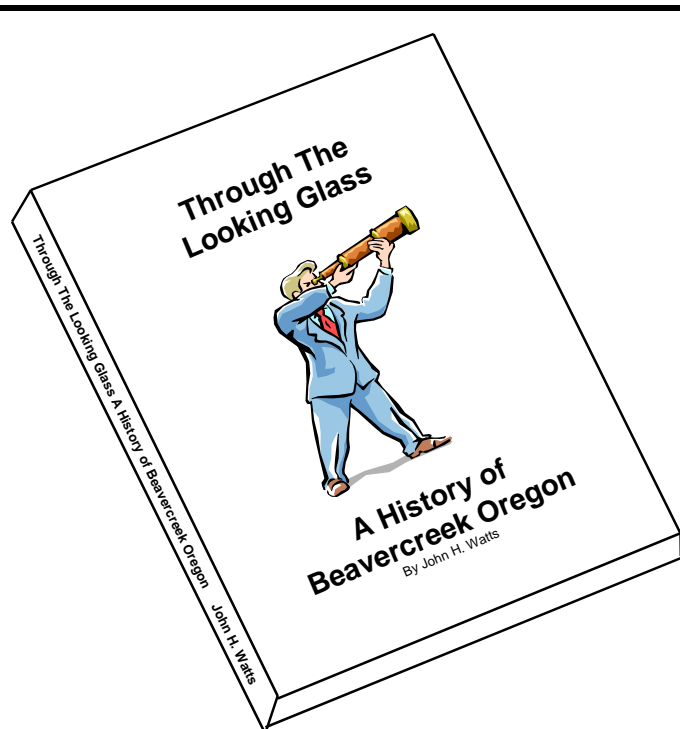
Tip of the Week:

Mosquito biting activity increases 500 times with a full moon. Regardless of the phase of the moon, protect yourself from biting mosquitoes by wearing clothing that covers most of your body. Repellent can be applied directly to clothing for added protection.

George Cashdollar – Biologist
Clackamas County Vector Control District

SUPPORT KEEPING BEAVERCREEK RURAL

Attend the August 4, 2009 meeting of the
Urban/Rural Reserves PAC 6:30 - 9:00 p.m.
Development Services Building
at 150 Beavercreek Rd, Oregon City



Interested in Purchasing This Book?

Would you like to be put on a
pre-publication reserved copy list?

E-mail the Bulletin at:

b_bulletin.info@beavercreekbulletin.org

put "Beavercreek History" in the subject field
so the message will not be missed.

DEQ Air Quality Monitoring For Beavercreek/Carus

Did you know that the Department of Environmental Quality, DEQ, has an Air Quality monitoring station in the Carus area? This monitoring station is located on Stafford Road West of Hwy 213.

The station monitors for Ozone (or what we know as Smog). The monitoring station takes a reading every hour. The information is put out in an Annual Report which should be available at this time.

Christine Kosinski, a member of the Hamlet of Beavercreek Board, has been in contact with Anthony Barneck of DEQ regarding the station and it's data gathering.

Mr. Barneck stated that the Beavercreek and Carus areas get pollution from the Portland Metropolitan area, brought in by winds from the Portland Metropolitan area. The worst months for Smog are in the Summer, and as the days heat up, pollutants become even greater.

The main component of Ozone or Smog comes from auto-

Got Any Ideas for Articles?

Feel Free to E-Mail or call the paper with your suggestions!

503-632-6525 or b_bulletin.info@beavercreekbulletin.org

monitor the effects of such development.

For more information you can go to the DEQ's website at www.oregon.gov/deq. From this page navigate to the right side for Air Quality Index to get the hourly readout for the Carus monitoring station.

You may also access the Annual Report (which comes out about every June) through their Air Quality Home Page. Again, navigate to the right side under Quick Links.

As Oregon City and the Beavercreek areas develop, especially for industry, we need to be vigilant and keep abreast of what businesses will be proposed and their impact on our air quality. Certainly, the more environmental and green industries that are begun the better. Particularly since the Beavercreek area already suffers from an Air Quality problem without the added pollution from growth.

Clackamas County Receives Federal Stimulus Funding to Enhance Primary Care Services

The Health Resources and Services Administration/Bureau of Primary Health Care approved the County's proposal for \$684,000 in stimulus funding for capital improvements in its primary care clinic.

The Community Health division of Clackamas County's Department of Human Services submitted a proposal in response to the funding available in the ARRA for federally qualified health clinics. Although the County closed its Sandy and Molalla clinics in 2008, it continues to operate the Beavercreek Clinic in Oregon City.

The County's proposal includes funding to expand space for the dental program at Beavercreek, additional supplies and medical equipment, purchase of modular clinic space, and renovation at the Gladstone Children's Center for a small primary care clinic.

"I'm very excited that we were able to obtain these federal stimulus dollars for expansion of our medical and dental clinics," said County Commissioner Jim Bernard. "This will enable us to provide quality medical care to more people and especially to the most vulnerable populations."

The Gladstone clinic will be housed in the Gladstone Children's Center, which is a unique and innovative model that brings a number of public and private child serving agencies together

Oregon City Planning Commission



Meetings
Aired
on Channel 14

2nd and 4th Thursdays
Beginning
at 8:00 p.m.

mobiles. The concerns arise from the VOC's (**Volatile Organic Compounds**, emitted as gases from certain solids or liquids) and NO₂ (**Nitrogen Dioxide**, an intermediate in the industrial synthesis of nitric acid, millions of tons of which are produced each year. This reddish-brown toxic gas has a characteristic sharp, biting odor and is a prominent air pollutant). Some Industrial pollutants, as well, add to the mix of Smog.

Mr Barneck went on to state that pollution from woodstoves, slash burns and backyard burning also effect pollution levels in our area. As people switch to pellet stoves, which are much less polluting, this will help the situation.

Ms. Kosinski asked if the Mountains behind Beavercreek trap the pollutants, keeping them from dissipating. Mr Barneck stated that Beavercreek is more up on a plateau with foothills in the background. Gorge winds could be helpful in driving the pollution out and eventually over the higher mountains. However, the gorge winds seem to be more effective in the Clackamas and Milwaukie areas and are not as helpful to some areas of Beavercreek.

The new proposed "Rivers Shopping Center" which Oregon City continues to develop is expected to bring much more pollution into the area due to cars traveling on local roads to reach the shopping center, therefore, the Hamlet must stay aware of development around it's boundaries and

Issues of the
**Beavercreek
Bulletin**

Now Available in
**PDF Format
Online!**

www.beavercreekbulletin.org

E and D Fab/Welding

Chips Ilc

P.O. Box 213
Oregon City, OR 97045Earl H. Stoddard - 971-235-5603
earlstoddard@yahoo.comDon Duval - 503-975-8950
chipsilc@bctonline.com
Fax - 503-632-4262

in one facility. Once operational (in about a year), the clinic will also be available to adults and other children. .

Clackamas County has been providing dental services in its Beavercreek Clinic since 1998, but the space has not been renovated nor the equipment updated since that time. The proposed renovation will add 220 square feet of space to the dental area, making room for a fourth dental chair, and substantial equipment replacement.

"Using stimulus dollars to increase access and availability of health care services to Clackamas County residents, especially those who are uninsured or underinsured, is one of the best investments in the County," said Commissioner Ann Lininger, "We will continue to seek out opportunities with community partners to assist our residents in need."

KEEP COOL BEAVERCREEK!!

SLIDO Maps Grossly Inadequate For Growth Analysis

Currently, most of our Counties, Cities and Metro are using SLIDO Landslide Maps produced by DOGAMI. This is a compilation (a State database) of Landslides in Oregon, which have previously occurred.

LIDAR is a new technology using Laser Detection and Ranging, giving the ability to map the surface of the earth with more accuracy than ever before. LIDAR can see below trees and vegetation to study the soil and earth below in very fine detail.

LIDAR not only has mapped each Landslide which has

previously occurred, but it will give the depth and type of slide with a high degree of accuracy. LIDAR can also identify areas which are prone to slide and fail in the future.

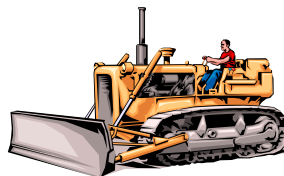
To give a comparison study of the two programs, we looked at the area of Redland Road, Holly Lane and Hwy 213. The SLIDO program identifies only 8 landslides, whereas the LIDAR studies identify more than 140 landslides in this same area, simply a phenomenal difference is attained by using the latest LIDAR technology.

The use of LIDAR Landslide Maps can be very beneficial to the Hamlet of Beavercreek as it develops into the future. It can accurately identify Slope and Slide areas which may be best left as Open Space and never developed due to safety issues. Because LIDAR has the ability to identify areas which are prone to slide again in the future, it is extremely useful in siting where new roads may or may not go, or where it is best to plan for residential and/or industrial areas.

Without LIDAR Maps it is extremely difficult to properly rule on some Land Use applications. LIDAR becomes a type of "seeing eye" in it's ability to see below the surface of the earth, to identify geological features, soils and to

Help Wanted !

Heavy Equipment Operators



The Community Park needs you!!
For more information

Beavercreek Charitable Trust 503-632-0228

define topography.

The Hamlet of Beavercreek recently worked on a Land Use application for a proposed Cell Tower in the Henrici Road area where LIDAR Landslide maps are not available.

Research of the proposed site was undertaken, subsequently showing the area to have significant steep slopes. After studying these results, the consulting firm asked for a full Geological Report, at which time the applicant made the decision to withdraw their application for the Cell Tower.

This is only one example, where LIDAR technology could have been very beneficial in pointing out previous geological and topographic issues which may be detrimental to development.

Christine Kosinski discussed LIDAR Landslide Maps, at the July Hamlet meeting. She was hopeful the Hamlet of Beavercreek would be able to apply to Clackamas County for help with the costs of producing LIDAR Landslide maps, either to cover the entire Hamlet boundaries or the possibility of having the highest priority areas mapped first. DOGAMI = State Department of Geology and Minerals Industries

LIDAR = Laser Imaging and Detection and Ranging

Dancercize

Combining Cardio Dance
& Yoga Movements

Beavercreek Grange
Call for Class Schedule

First Class Free!

Call Shirley

503-655-0839



2009 FREE Family Film Festival

Proudly Sponsored By

American Family Insurance

*ALL Movies Start at 10:00 a.m.
Oregon City Hilltop 9 Cinemas*

Rating: G

8/4-8/5 - Everyone's Hero

8/11-8/12 - Igor

8/18-8/19 - Mr. Magorium's Wonder Emporium

8/25-8/26 - Mr. Bean's Holiday

Rating: PG

8/4-8/5 - Surf's Up

8/11-8/12 - Journey to the Center of the Earth

8/18-8/19 - Bee Movie

8/25-8/26 - Alvin & The Chipmunks

The Movies are Sponsored FREE by the Agency of
Deb Hepler of American Family Insurance



www.debhepleragency.com

19105 S Beavercreek Rd, Oregon City

For a FREE insurance review, quote or insurance question
contact: Deb Hepler at 503-723-1280 or visit her in the
Berry Hill Shopping Center



The Beavercreek United Church of Christ "The Ten O'Clock Church" FOOD PANTRY

The food pantry at the Beavercreek United Church of Christ, aka, Ten O'Clock Church, is open to those in need. If you find yourself in need of help, please call the pager number below and leave your phone number. Someone will return your call.

This food pantry is open to all who are in need in our community.

503-724-1095

Dish Network Will Pay \$6 Million Settlement

Dish Network Corp. said it has agreed to pay nearly \$6 million to settle charges that it improperly marketed, promoted and sold its products and services in a settlement with attorneys general and 46 states, including Oregon and Washington.

State officials say Dish failed to disclose all the terms of service to customers, including rebates, credits and free offers. The States say that Dish refused to take responsibility when customers were misled by service resellers and equip-

CLACKAMAS COUNTY

Pot Hole Hotline

PLEASE CALL 650-3262

☎ 24-Hour Message Line ☎

ment installers.

State officials also accused Dish of charging customers' credit cards and withdrawing money from bank accounts without giving adequate notice and getting proper authorization. They also say Dish didn't tell customers that equipment sold or leased was used or refurbished.

Dish will pay restitution to affected customers who filed complaints between January 1, 2004, and July 9 2009. People can also file complaints over the next five months with their state's attorney general, Dish or Better Business Bureau to qualify, as long as the problem occurred within the past two years.

Tax Credits Available For Farm Worker Housing

Oregon Housing and Community Services (OHCS) announced on July 8, 2009, a continuing funding opportunity for farm worker housing.

The agency's Farm worker Housing Tax Credit program for 2009 has \$2.3 million in remaining tax credits available to construct, acquire and/or rehabilitate housing for low or very-low-income farmworkers. The credits are awarded for up to 50 percent of all eligible costs for improving or constructing the housing and can be taken over a five year period. The credits may also be sold.

Farm worker housing is housing that is occupied only by farmworkers and their immediate families. The housing may be year-round or seasonal, in-town or on-farm. The housing must be located in Oregon and remain designated for farm worker use for a minimum of 10 years.

Applications for these tax credits will be taken on a first-come, first-served through December 31, 2009. Application must be made no later than 180 days from construc-

Community Reader Board Info Rates

\$1.00/day

To Post Your Organization's Info
Call 503-632-6525

tion start. For more information please contact Loren Shultz, OHCS program advisor, at 503-986-2008 or email loren.shultz@hcs.state.or.us.

	Window Cleaning
Jeremy Smith (503)319-7900 randalllouise.com	*Residential-Commercial *Up to 25 ft *Streak Free Cleaning

Oregon Housing and Community Services is the state's housing finance agency and community services program administrator. The department provides financial and program support to create and preserve opportunities for quality, affordable housing serving Oregonians of lower and moderate income, and administers federal and state anti-poverty, homeless, energy assistance and community service programs. The OHCS mission is to "Provide leadership that enables Oregonians to gain housing, become self-sufficient and achieve prosperity." For more information go to <http://www.ohcs.oregon.gov/>.

Witnesses Requested In Oregon City Bar Fight

On June 12, 2009, at about 10:00 pm, a verbal exchange between two men led to a physical altercation. This was at the Wichita Pub, located at 19140 S. Molalla Avenue, in Oregon City. One male was punched in the face, breaking his jaw. We would be interested in finding any witnesses who have information regarding this assault.

Contact Info: If you have any questions regarding the case or the information we are looking for, please call Detective Lloyd Foulkes at 503-496-1690.

Stormwater Facility



WES
Beyond clean water
www.clackamas.wes.net

For Information or To Report Problems
Call (503) 742 - 4567

Theft of Aluminum Signs From Water Environment Services in Oregon City

On July 7, 2009, at 9:35 a.m. the Oregon City Police Department was called to the Water Environment Services located at 15941 Agnes regarding a theft. The company reported 120 aluminum signs stolen from their facility. The signs are 2' by 3' in size and read "Stormwater Facility - WES" 120 signs were taken with a value of \$45 each.

It is believed that the signs may have been stolen for recycling money.

Anyone with information please contact Oregon City Police Officer David Edwins 503-496-1586 ext 711.

Urban Reserves Study Moves Into Beavercreek at 11th Hour

Dear residents and friends of Beavercreek,

Clackamas County is now considering a large portion of Beavercreek to be included in an Urban Reserves study. This new area creates a large circle from North of Henrici Rd. going East just short of Beaver Lake, continues South and to the East of the Beavercreek Grade School, South to Carus Rd. and West of 213!

If approved, this area will be looked at every 5 years by Metro for expansion of the Urban Growth Boundary starting next year.

Not even our Hamlet officers knew about this development until July 14th and on September 8th, decisions will be made!

Oregon City Commission Meetings



Meetings are held the 1st and 3rd
Wednesday of the month at 7:00 p.m.

Videos will be shown on the Monday following the meeting at 8:00 p.m. on Channel 14

Write the County Commissioners today and be sure to attend the Public Hearing on Aug. 10th at Development Services Bldg., 150 Beavercreek Rd. Oregon City.

For a map, information and web links see:

www.keepbeavercreekrural.blogspot.com

Jan McMahon
Beavercreek, OR

Oregonians May Qualify For Nationwide Insurance Class-Action Settlement

More than 9,000 Oregonians may be eligible for payments as a result of a class-action settlement between Nationwide Mutual Insurance Co. and affiliated companies and homeowner policyholders who claimed they were underpaid on structural damage claims since 1996.

Claims must be submitted by August 26, 2009. Potentially eligible Oregonians should have received a notice of the class-action lawsuit by mail but can still find the claim form online or ask for it by mail.

The lawsuit claims that Nationwide underpaid policyholders by not taking into account general contractors'

overhead and profit when it paid certain claims involving damage to a building or other structures. Homeowners who submitted claims from 1996 through March 20, 2009, or who

Visit this Web site created by the courts and lawyers for both sides: www.alexanderclassactionsettlement.com

Call the court-appointed settlement administrator's office at 1-888-287-1333.



Trinity Lutheran School

16000 S. Henrici Rd.
Oregon City, OR 97045

A Safe, Loving, Christian Education

Small Class Sizes

Affordable Tuition

Preschool, Pre-Kindergarten

Half and Full-Day Kindergarten

And Grades 1-3

www.trinityoc.org

503-632-5554

Clackamas County Committee For Citizen Involvement Met July 21

The Committee for Citizen Involvement (CCI) of Clackamas County met Tuesday, July 21, 2009, from 7:00 to 9:00 p.m. in the Development Services Building, 150 Beavercreek Road, Oregon City, 1st floor auditorium, room 115 (please note the new location of CCI meetings).

The agenda included a report on the Hamlets and Villages program, review draft memo to Board of County Commissioners relating to Citizen Communication time limits at weekly BCC business meetings, sign up for staffing County booth at County Fair (August 18-23), report on Metro Committee for Citizen Involvement (MCCI), Planning and DTD (Department of Transportation and Development) update.

More information can be found on the County website at: www.clackamas.us/citizenin/

The Committee for Citizen Involvement is a process oriented committee, providing resources and opportunities for citizens to participate effectively in Clackamas County's land use planning and decision making process.

The Committee meets the third Tuesday of the month from 7:00 to 9:00 p.m. For more information contact Barbara Smolak, Citizen Involvement at 503.655.8552 or barbarasmo@co.clackamas.or.us.

Summer Camping Special Includes a Free Night

Campers renting sites for two straight nights can get one free at 20 selected State parks.

The Oregon Parks and Recreation Department (OPRD) is offering a free camping night as part of a special summertime promotion at 20 state parks across Oregon.

The department is introducing a coupon today (June 10) that entitles customers who rent campsites for two consecutive nights to another night's stay for free, Sunday through Thursday.

received a payment during that period, may be affected.

Nationwide maintains that it properly resolved and settled homeowner's claims but agreed to settle the suit to avoid the cost and distractions of prolonged litigation. An Arkansas circuit court was to hold a July 27 hearing on whether to approve the settlement.

These Nationwide companies are involved: Nationwide Mutual Insurance Company, Nationwide Mutual Fire Insurance Company, AMCO Insurance Company, Allied Property and Casualty Insurance Company, Depositors Insurance Company, National Casualty Company, Nationwide Insurance Company of America, Nationwide Affinity Insurance Company of America, Nationwide Property and Casualty Insurance Company, Nationwide Lloyds, Nationwide Insurance Company of Florida, Nationwide Indemnity Company, Scottsdale Indemnity Company, Scottsdale Surplus Lines Insurance Company, and Scottsdale Insurance Company.

For details on the issues, who is eligible, and how to file a claim, consumers should:



CONNECTING LOCAL GROWERS TO THE LOCAL COMMUNITY!

Don't miss out on the Fresh Food, Flowers & MORE!

Weekly Family Entertainment including
LIVE MUSIC, Demonstrations & Activities!

Great access, Excellent Parking, Stroller & Wheelchair Friendly!

SATURDAYS • 9AM TO 2PM

Located at 2051 Kaen Road in Oregon City off Beavercreek Road
at the Clackamas County Public Service Building

www.orcityfarmersmarket.com

FRESH & LOCALLY GROWN:

- fruits & vegetables
- plants
- artisan foods
- eggs
- cheeses
- meats & seafood
- wines
- honey & preserves
- pastries & breads
- fresh cut flowers!

The coupons, which are good through Sept. 30, must be printed off the department's website, www.oregonstateparks.org.

The "buy two, get one free" offer is limited to one per customer per stay, and excludes yurts and cabins. The parks honoring the coupons rent sites exclusively on a first-come, first served basis.

"Camping: It's an Oregon Value," is the theme of the promotion. "Camping in an Oregon State park is a great bargain, and this is a way to thank customers who have made it their tradition," said Jennifer McCormick, OPRD marketing and communications specialist. "Being outdoors in a State park campground is what summer is all about. Camping really is an Oregon value."

OPRD chose the 20 parks to highlight State park campgrounds where reservations are not accepted. "We're hoping people will discover the special experiences they can have camping at places that may not be as well known as some of our reservation parks," said McCormick. "These parks are treasures, and we want to encourage everybody to discover them for themselves."

The parks offering a night of free camping include Collier Memorial State Park, home of a renowned outdoor logging

Do you have something you would like to sell or rent?



You can place an ad in the Bulletin for \$1.50/ issue.

Call Sharon at 503-632-6525 and leave a message or E-mail her at

b_bulletin.info@beavercreekbulletin.org

museum 30 miles north of Klamath Falls, and Cape Blanco State Park, next to Oregon's oldest lighthouse on the westernmost tip of the State, nine miles north of Port Orford. Humbug Mountain State Park, six miles south of Port Orford, has the State's largest number of non-reservable campsites (94), and the distinction of being the first State park campground built on the Oregon coast.

The other parks are:

Carl Washburne, 14 miles north of Florence

Alfred A. Loeb, 10 miles northeast of Brookings, on the coast;

Ainsworth, 18 miles east of Troutdale

Viento, eight miles west of Hood River, in the Columbia River Gorge;

Cascadia, 14 miles east of Sweet Home

Fall Creek State Recreation Area's Cascara Campground, 27 miles southeast of Eugene in Springfield, in the western foothills of the Cascades

Goose Lake, 14 miles south of Lakeview

Jackson Kimball, 10 miles southeast of Crater Lake National Park

Jasper Point campground in Prineville Reservoir State Park, 16 miles southeast of Prineville in central Oregon

Catherine Creek, eight miles southeast of Union

Clyde Holliday, six miles west of John Day

Hilgard Junction, eight miles west of La Grande

Lake Owyhee, 33 miles southwest of Nyssa



PROFESSIONAL AUTO DETAILING

503-201-8450

22052 S. Ferguson Rd. Beavercreek, OR 97004

CUSTOMS / RODS / CARS / TRUCKS

Minam, 15 miles northeast of Elgin

Red Bridge, 16 miles southwest of La Grande

Ukiah-Dale Forest, three miles southwest of Ukiah

Unity Lake, 50 miles east of John Day, in eastern Oregon.

More information about these parks is available on individual park pages through www.oregonstateparks.org and by calling 1-800-551-6949.



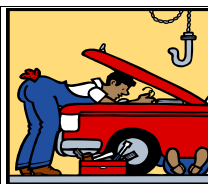
The Hamlet of
BEAVERCREEK
Spotlight

The July meeting of the Hamlet of Beavercreek took place on Wednesday, July 22, 2009, at the Beavercreek Grange on Kamrath Road with about 29 members and guests in attendance. The meeting was called to order at 7:03 p.m.

There was no guest speaker.

The highlights of the June 24, 2009, meeting were read by the Secretary, Joan Martinez. The minutes were then approved.

Under Public Comment, a member stated that she had just been notified by a friend that there had been a change in the area being studied for the Urban Reserves. This area pertained to the Beavercreek. She wanted to know why the information was not on the Hamlet's website. She also wanted to know why the Board was not sharing this information with the residents of the area and why they weren't doing anything about it.



RJF LIMITED

Auto Truck Mower Repair

Welding & Fabrication
22675 S Beavercreek Rd
503-317-3083

These statements were not taken kindly by the Board of the Hamlet. They explained that they had just been informed about the situation themselves. They stated that the change to the area for study had not been shared with those who attend the public meetings and they were just as outraged as the member was. They also said the matter was on the agenda and it would be discussed later in the meeting. The Board noted that the community is kept abreast of what is going on. Meeting notices are posted on the reader board, on the Hamlets website and in the paper which is also avail-

Garden Center & Grower
22289 So. Molalla Hwy. 213
Oregon City, Oregon 97045
Hours:
Mon - Sat 8 - 6, Sun 10 - 5

EVANS FARMS

(503) 632-3475 • Fax: (503) 632-4967



able online.

They explained that the Board serves with no pay as volunteers and that they expend much time attending meetings on behalf of the community. It was suggested that now that the person was aware of the situation that perhaps they might start attending the community meetings and volunteering to help. The Board does not have the resources, time or otherwise, to do everything for the community. The community needs to participate.

Griff Crooks told those present that he lives back behind Beavercreek Elementary School and that on or about June 22 his three dogs were attacked in his yard by a mountain lion or cougar. One of the dogs was severely injured. He wanted everyone to be aware of the situation and keep close tabs on their pets and livestock.

There was one land use issue before those present. It was a renewal of a Home Occupation Permit for Terry Rinkes' landscape and construction business. It was approved.

Bill Merchant announced that the Hamlet elections would be held in September. Anyone who was interested in running for office should contact any of the Board members to let them know. There will be three positions open. Christine Kosinski, Corresponding Secretary and Co-Speaker said she would run again as would Larry Church who is the Registrar. Joe Keicher, Treasurer, said he had not decided if he would run for re-election.

To contact the Board you can go to:

<http://www.HamletOfBeavercreek.org>

Click on the "About" link on the left of the page scroll down and click on "Board Members"

It was also announced that the 3rd Annual "Hamlet Happening" would be taking place at Hopkins Demonstration Forest again this year on Saturday, September 12th from 3:00 to 7:00 p.m. Go to page 16 for more information.

Christine Kosinski gave a report on the proposed cell

tower on Henrici Road. AT&T decided to withdraw their application when a full steep slope evaluation was ordered (at a cost of about \$26,000.00). See the article on the SLIDO and LIDAR maps on page 6 of this publication for more information on mapping of landslides.

A motion was made to encourage involvement with 1000 Friends of Oregon. It passed.

The meeting was adjourned at 8:58 p.m.

Everyone is encouraged to attend the monthly Hamlet Community meetings and the quarterly Town Hall meetings to participate and share ideas and concerns on the issues pertinent to our community. Members 18 years of age and older who live, own a business, or property within the Hamlet area may vote on Hamlet issues. The Hamlet of Beavercreek Boundary Map is located online at http://www.beavercreekbulletin.org/Misc/Beavercreek_Hamlet_Boundary_map.pdf

The Community meetings take place on the fourth Wednesday of the month at the Beavercreek Grange on Kamrath Rd at 7:00 p.m. The Town Hall Meetings will occur every quarter. For more information, please call the Hamlet Information Line at 503-632-8370 or visit the Hamlet web site at <http://HamletOfBeavercreek.org>.

RecMobile, Free Movies Roll Through Area Parks

Free movies and the North Clackamas Parks and Recreation District (NCPRD) RecMobile come to district and County parks for families and those wanting to make the most of the summer.

Movies on the big screen begin at dusk, usually about 8:30 p.m. The remaining summer schedule is as follows:

Friday, Aug. 7 – "Madagascar 2," Risley Park, 2350 SE

BEAVERCREEK



AUTO SALVAGE
503-632-3338

**Buying Junk Cars...
Call for Details**

**Areas ONLY Licensed
Recycler!**

Also a Licensed Used Car Dealer

We also accept scrap

D&M Livestock Service

Dennis Burlingame

"The Hoofmeister"

- *Bovine Hoof Care
 - *Bovine & Dairy Goat A.I. Service
 - *15 years Herdsman Experience
 - *Graham School Certified
 - *Dairyland Hoof Care Institute
- (541)546-7013 or (541)788-0458



Swain, Milwaukie

Saturday, Aug. 8 – "Madagascar 2," Metzler Park, 24526 S. Metzler Park Rd., Estacada

Friday, Aug. 14 – "E.T.," Linwood Elementary, 11909 SE Linwood Ave., Milwaukie

Saturday, Aug. 15 – "Bolt," Pfeifer Park, 14074 SE 139th Ave., Clackamas

House Bill 2116**Provides Health Insurance For
140,000 More Oregonians****House Bill 2009****Tackles Affordability, Transparency
and Quality**

The Oregon Health Fund Board's vision for comprehensive health reform in the State, laid out in the plan, "Aim High: Building a Healthy Oregon," was crafted after over 100 public meetings and with citizen input from all corners of the State. With the passage of these two bills which are designed to work in tandem, implementation of the plan will soon begin to provide health coverage to more of Oregon's vulnerable citizens while simultaneously undertaking an ambitious agenda to improve health care delivery and reduce medical inflation.

House Bill 2116 will leverage nearly \$2 billion over the next four years to help the State provide health insurance for 200,000 Oregonians through the Oregon Health Plan (OHP) and a new shared-cost insurance product called "Kids Connect." 80,000 of those newly insured will be children under the age of 19 and the remaining will include an expansion of

35,000 low income adults to the OHP Standard program and an estimated 88,000 additional low income and disabled individuals expected in the OHP Plus program, which is federally mandated.

House Bill 2009 contains a number of sequenced health reform steps aimed at reducing the growing cost of health care and bringing more efficiency and transparency to the system. Some reforms included in the bill are steps to streamline State health care agencies into one Oregon Health Authority, governed by a citizen-led Health Policy Board; simplify and standardize the transactions between medical providers and insurance carriers; and require the collection of all medical claims data to give consumers tools to compare the cost and quality of their health care.

Bill Thorndike, Chair of the Health Fund Board, praised the collaborative work between the Oregon House and Senate in crafting the legislation, "The depth of experience in both the House and the Senate is what ultimately brought together a complex set of initiatives into two very practical bills that will advance health reform dramatically."

BEAVERCREEK ANIMAL HOSPITAL**MELANIA R. JOHNSON, D.V.M.****LORA GEISLER, D.V.M.****New Hours:**

Mon - Thurs: 8 - 8

Fri: 8 - 6

Sat: 9 - 5

Closed Sundays

22008 S. Beavercreek Rd.
Beavercreek, Oregon 97004

Telephone: (503) 632-2144

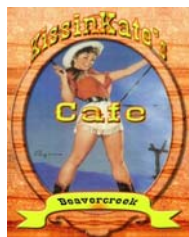
Fax: (503) 632-2241

The companion bills were developed as a two-track approach that recognized that expanding coverage without controlling costs is unsustainable. With the enactment of both bills, Board Vice-Chair Eileen Brady sees a natural fit with health reform discussions taking place at the national level. "More and more we are hearing from Washington that rising health care costs must be addressed as a part of national health reform. Oregon will be leading the way with the passage of HB 2116 and HB 2009."

**New Business Recycling
Requirements Take Effect in
Clackamas County**

Effective July 9, Clackamas County businesses are required to recycle all paper and containers, educate their employees annually about the need to recycle, and make recycling containers as convenient and plentiful as those used for garbage.

The Clackamas County Board of Commissioners approved the new requirements, which are in line with those adopted by Metro Council and other local governments, as a part of the Regional Solid Waste Management Plan.

**Kissin Kate's Café**
21950 S Beavercreek Rd**NEW HOURS**to better serve you
8:00 a.m. to 10:00 p.m.
7 Days a WeekFor Take-Out
Orders CALL**503-632-3190**

According to Metro, despite progress made throughout the region, an estimated 14 percent of businesses in the Portland area still do no recycling at all or only recycle cardboard. As a result, regional businesses dispose of, rather than recycle, more than 100,000 tons of recyclable material every year.

According to Clackamas County Senior Sustainability Analyst Rick Winterhalter, "Diverting this recyclable material will result in millions of dollars in net environmental benefits, including reductions in greenhouse gas emissions. In addition," he noted, "increased recycling will also support Oregon's paper mills."

County recycling experts have met with and solicited input from area businesses and business organizations during the past few months to discuss the need for and importance of the requirements. The new regulations require businesses, including those in multi-tenant buildings, to:

- Prepare paper, cardboard and containers (aluminum cans, plastic bottles and glass) for recycling
- Ensure adequate recycling containers are available
- Post recycling instructions where materials are collected



Falling Hair Barber Shop

Located across from G.I. Joes in GG's village

Hours:	License #101162764
Tues.-Fri. 9-6 pm	Scott Brown
Sat. 8-5 pm	15717 S.E. McLoughlin Blvd.
(503) 657-7722	Milwaukie, OR 97267

Although the new program carries an enforcement component, Winterhalter said the Counties and Cities will continue to provide every opportunity for compliance prior to enforcement. All businesses, property managers, schools, public agencies, churches and non-profit organizations are eligible to receive free assistance to meet the new requirements.

"All the tools are available for businesses to comply," said Winterhalter. "Our Recycle at Work specialists are available to work with businesses and garbage/recycling collectors, and can provide the boxes, signage and educational materials needed to start a recycling program."

Businesses that would like more information or to schedule visit from a recycling specialist, are asked to call the Clackamas County Office of Sustainability at 503-557-6363.

Portland Parks & Recreation Announces 2009 Concert Schedule For Washington Park Summer Festival

The free performing arts festival is made possible through the generous support of Hotel deLuxe, Hotel Lucia, and other local businesses and individuals

Portland Parks & Recreation (PP&R) has just announced the 2009 schedule of dates and performers for the popular Washington Park Summer Festival, August 2-15. Featuring a diverse array of music and dance, from world beat to classical, the free series draws thousands each year to the Washington Park Amphitheater.

The Festival depends upon private support to offset the production costs for the free performances. When lack of funding for the Festival jeopardized the 2009 season, Gordon Sondland, the CEO of Hotel deLuxe and Hotel Lucia pledged \$50,000. Over 25 additional businesses and individuals contributed to the challenge from Sondland to match the Hotel deLuxe's and Hotel Lucia's initial donation and save the Festival's 2009 season. The successful fundraising effort has enabled PP&R to present the Festival during the first two weeks of August, continuing the 60-year tradition, free of charge for the community to enjoy.

All performances begin at 6 p.m. in the Washington Park Amphitheater, adjacent to the International Rose Test Garden. Picnics are welcome and there will be food vendors on site. Alcoholic beverages for personal consumption are permitted in the park only during the concerts.

To avoid parking hassles, ride TriMet to the concerts (www.trimet.org). Take MAX Blue or Red line to the Zoo, then catch the Washington Park Shuttle. Bus #63 also runs prior to the concert only. Limited parking is available in the Archery Range, about a mile up Kingston Drive from the Rose Garden toward the Oregon Zoo. TriMet's shuttle service has been graciously extended until 9 p.m. to accommodate those returning to the Archery Range or the MAX station at the Zoon after the concert. Regular fares apply.

Wheelchair users are invited to enter and exit the concert through the accessible parking area at the stage level.

For more information, visit portlandparks.org or call 503.823.5446. Concerts will not be cancelled, except in case of serious rain.

-Other free events and entertainment-

This summer, Portland Parks & Recreation continues its tradition of offering safe, healthy activities for children and families in parks, pools, and community centers across the city. From the Washington Park Summer Festival and concerts in neighborhood parks, to Movies in the Park, Summer Playground fun, and more, you'll find something both free and fun to enjoy! Visit the "Summer Free for All" website at www.portlandparks.org for more information.

PRESENTING SPONSORS

Hotel deLuxe, Hotel Lucia

LEAD SPONSORS

The Irving Levin and Stephanie Fowler Fund of The Oregon Community Foundation, The Mark Spencer Hotel, NW Natural, Pacific Power, PGE, Portland Trail Blazers, Qwest, Reser's Fine Foods, TransCanada, TriMet

SUPPORTING SPONSORS

Bank of America, Miller Nash LLP, Safeway, US Bank, Wells Fargo

CONTRIBUTING SPONSORS

Starlett & Stephen Brown, NW Securities Advisors LLC, City Center Parking, Kaiser Permanente, KeyBank, Melvin Mark Companies, OSU Foundation, Star Park/Schlesinger

Companies, Steel Rives
COMMUNITY SPONSORS

Craig Boretz, Dewey Dental, FutureWorks Consulting, La-

Need A Location For An Event?

The Beavercreek Grange
A Member of
The Beavercreek Community
Since 1896
Has You Covered!

The Grange Is Available For Rent
To Groups Or Individuals

For Info Call Ed Schettig
503-329-3048

Support Your Local Grange

borers' Local 483, Marylhurst University, Jay Martin, Ms.
Willi Martinsen, Susan Newman & Phil Goldsmith, and Luisa
Simone & Robert Obrinsky.

Clackamas County Shares Tips For Keeping Pets Cool During Hot Weather

Summer is here and Clackamas County Dog Services reminds pet owners to be especially careful to keep their pets cool and safe during hot weather.

Dogs and cats can't perspire as humans do and can only eliminate heat by panting and through the pads of their feet. That means they heat up very quickly and have limited resources to cool themselves.

Dog Services Manager Diana Hallmark notes that the temperature in a parked car, even in the shade or with windows partly open, can increase rapidly. Within as few as 10 minutes, a dog or cat can be seriously harmed or killed. Leaving a pet in a parked car may also subject the owner to criminal neglect or abuse charges.

According to the Humane Society of the United States, even with outside temperatures as low as 72 degrees a car's interior temperature can increase an average of 40 degrees within an hour. While some people leave windows slightly

open, that doesn't provide enough relief to protect your pet.

Hallmark suggests people keep pets from overheating by:

Leaving them at home during warm or hot weather
Being sure they have constant access to shade or a cool room, and to cool, potable drinking water, and
Being mindful of overexertion, this may cause overheating.

Take walks early in the morning or late in the evening and at a relaxed pace.

Watching out for heatstroke – heavy panting, staring, high fever, rapid heartbeat, vomiting, collapse and disobedience. If heatstroke is suspected, call a veterinarian immediately and apply water-soaked towels to hairless areas of the animal's body to lower its temperature.

Never leaving pets in an unattended parked car or truck, with or without open windows.

Oregon City Concerts For August

CARNEGIE CENTER

Concerts are held at 6:30 p.. On Thursdays through August 27, 2009. Carnegie Center is located at 606 John Adams Street. Refreshments available at 5:30 p.m.

Aug 6: **Bodacious**, Cajun and Zydeco

Aug 13: **Norman Sylvester**, Blues

Aug 20: **Eddie Parente**, Irish fiddle music

Aug 27: **The Touchables**, 1950s and 60s tunes

LIBERTY PLAZA

In August there will be two concerts in downtown Oregon City at Liberty Plaza located at 807 Main Street (next to the Clackamas County Courthouse).

Admission is FREE and there will food available through vendor booths.

Friday, August 14, 2009:

5:30 p.m. - **Dry County Crooks**

8:30 p.m. - **Robbie Laws**

Bring your lawn chairs! Food and beverages are available on-site!

Clackamas County Seeks Volunteers for Board of Property Tax Appeals

The Clackamas County Board of Commissioners will soon be appointing two pools of County residents to serve on the Board of Property Tax Appeals, which offers reimbursement to board members due to the concentrated time commitment involved. The County is seeking non-office-holding County residents who are available during business hours.

Board members meet for a mandatory one-day training session prior to the board convening in February 2010. The board will hear property tax appeals between February 1, 2010 and April 15, 2010. Terms of office end June 30, 2010.

Hundreds of Clackamas County property owners appeal



**Karaoke
Happy Hour
Four Large Plasmas
To Watch Your
Favorite Sports Event!**

21950 S. Beavercreek Rd
503-632-8647

to the Board of Property Tax Appeals each year to make sure they are paying no more than their fair share of property taxes. The board considers these appeals and arrives at a decision on each.

Serving on the board is a demanding and time-consuming job, according to County Clerk Sherry Hall. "Because of the large time commitment, the County offers board members reimbursement," she said.

Interested individuals need to complete an application form. Applications may be completed and submitted online via the County's website, <http://web3.co.clackamas.or.us/citizenin/app.asp>

For an application form contact Citizen Involvement, 503-655-8552, 2051 Kaen Road, Oregon City or call the board clerk, Merry Broughal at 503-655-8662. Applicants will be asked to attend an interview. Application deadline is Thursday, August 13, 2009.

Oregon Military Museum Awarded Conservation Bookshelf

Objects and artifacts held by the Oregon Military Museum will be preserved for future generations with help from a set of conservation books and resources that are being awarded to it by the Institute of Museum and Library Services (IMLS).

The series "Connecting to Collections Bookshelf" is a core set of conservation books and resources, which are awarded through a competitive process.

Since early 2008, IMLS has awarded nearly 2,800 free sets of the Conservation Bookshelf, in cooperation with the American Association for State and Local History (AASLH).

The Oregon Military Museum is set to receive its set, follow-

ing its application, which described the needs and plans for the care of its collections.

The set comprises resources for collections typically found in art or history museums and in libraries' special collections.

The IMLS Bookshelf is a crucial component of Connecting to Collections: A Call to Action, a conservation initiative that the Institute launched in 2006.

IMLS began the initiative in response to a 2005 study released in partnership with Heritage Preservation, A Public Trust at Risk: The Heritage Health Index Report on the State of America's Collections.

"When IMLS launched this initiative to improve the dire state of our nation's collections, we understood that the materials gathered for the Bookshelf would serve as important tools for museums, libraries, and archives nationwide," said Anne-Imelda Radice, the Director of IMLS.

In the last and final round of awards, 907 museums, libraries, and archives were selected to receive the Bookshelf. The Bookshelf program distributed a total of 2,751 sets of books, online resources, and a user's guide, to institutions in every part of the country.

To learn more about the IMLS please visit www.ims.gov.



DEB HEPLER, Agent
DEB HEPLER AGENCY

19105 SOUTH BEAVERCREEK ROAD
OREGON CITY, OREGON 97045

Office: 503-723-1280

Fax: 503-656-

Website: www.debhepleragency.com

24-Hour Claims Reporting: 800-374-1111



Karen Brisbin Sworn In As Clackamas County Justice Of The Peace

Clackamas County Justice Court's Justice of the Peace Karen Brisbin was sworn in Monday, June 15, at 4 p.m. in a ceremony in the Board of County Commissioners Hearing Room.

Governor Ted Kulongoski appointed Brisbin May 8, 2009, and thanks her for her willingness to serve Clackamas County. County Commissioners created the district by board order on Feb. 12.

Brisbin graduated from Lewis and Clark College and serves as the municipal judge for the City of Sandy and maintains a criminal defense practice in Oregon City.

The Justice Court will handle citations, violations and other minor offenses. The court schedule will be determined by caseload but is expected to be in operation two days a week plus some evening hours.



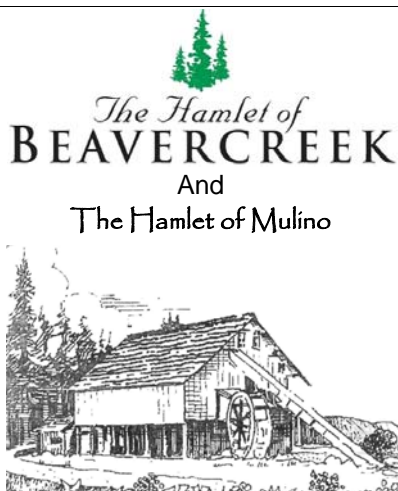
Cut Flowers

\$3.00 a bunch

at roadside stand

16078 S. Spangler Rd.
Oregon City, OR 97045

please return jars for others



Invite you to the
Third Annual

Hamlet Happening!

We're combining forces to welcome all our members and guests to join us at the

Hopkins Demonstration Forest

16750 S Brockway Road, Beavercreek

on **Saturday, September 12th, from 3 to 7 p.m.**

Bring a lawn chair, pot-luck salad or dessert, and your

beverage of choice. We'll provide hamburgers, hot dogs, buns, ribs, corn, fixin's and soda

There'll be raffles, prizes and information about our Hamlets and land use issues.

It's a chance to meet your neighbors and enjoy
An afternoon in the forest.

Music Provided by "Those Guys" and "Meister Band"



'Beyond Demos IV' Opens in Alexander Gallery

OREGON CITY – "Beyond Demos IV" opens in the Alexander Gallery at Clackamas Community College on Monday, Aug. 17 and continues through Oct. 2. An artist's reception will take place on Tuesday, Sept. 22, from 3 to 6 p.m. "Beyond Demos IV" is a group show that includes painting,

photography, ceramics and mixed media. The exhibition features the work of teachers who are members of the Oregon Art Education Association: Lynn Pass, West Linn High School; Shannon McBride, Lakeridge High School; Sara Bailey, North Marion High School; Linda W. Kielling, Rosemont Ridge Middle School; Mary Burgess, David Douglas High School; Kelda Van Patten, Hillsboro High School; Anne Goodrich, Sunset High School; Jan Glenn, Lewis & Clark College, and Christopher Shotola-Hardt, Wilsonville High School.

The Alexander Gallery is open from 9 a.m. to 5 p.m., Monday through Friday, and during special events in the Niemeyer Center. *The gallery is open by appointment only Aug. 17 – Sept. 4.* For more information, call Rick True at 503-657-6958, ext. 2541.

The Public is Invited to Comment on Urban And Rural Reserves at The August 10 Clackamas County Planning Commission Meeting

This email is your notification of this special hearing

The Clackamas County Planning Commission has scheduled a special meeting for 6:30 - 10 p.m., Monday, August 10, to give the public an opportunity to comment on the Urban and Rural Reserves process at a public hearing. The hearing will be held in the County's Development Services Building Auditorium at 150 Beavercreek Rd., Oregon City.

People who wish to speak at the hearing will be asked to sign up at the meeting. The Planning Commission will also accept written testimony. After the hearing, the Planning Commission will deliberate and determine what, if any, suggestions, comments or recommendations it wishes to pass on to the Board of County Commissioners.

The process of identifying Urban and Rural Reserves is taking place throughout the three-county Portland metropolitan area during 2008 and 2009 to identify where urban growth should and should not take place in the region over the next 40-50 years.

- *Urban Reserves* are areas outside the current urban growth boundary (UGB) determined to be suitable for accommodating population and job growth for the next 40 to 50 years.

- *Rural Reserves* are areas outside the current UGB to be preserved for agricultural and forestry uses, and natural resources protection for the next 40 to 50 years.

Public education and input has been part of the process from the beginning, with presentations at community meetings, open houses, surveys and web information.

In Clackamas County, a 21-member Policy Advisory Committee (PAC) is responsible for advising the Board of Commissioners on the selection of lands to be designated as Urban and Rural Reserves. The PAC is made up of representatives of cities in Clackamas County, Community

Planning Organizations (CPOs)/Hamlets/Villages and other interests.

The PAC has been meeting an average of once a month since spring 2008. An upcoming PAC meeting is scheduled for August 18, at 6:30 p.m., in the Development Services Building Auditorium, 150 Beavercreek Rd, Oregon City. The meetings are open to the public.

More information about the County's process, including material shared with the PAC, is available at www.clackamas.us/transportation/planning/piurban.jsp.

CRT Presents 'A Funny Thing Happened on the Way to the Forum'

Portland theater favorites bring their talents to the Clackamas Repertory Theatre production of the farce "A Funny Thing Happened on the Way to the Forum," opening August 6. The play continues Thursdays through Sundays in the Osterman Theatre at Clackamas Community College through August 23.

"Forum" is directed by Ernie Casciato, and features Tobias Andersen, artistic director of the Mt. Hood Repertory Theatre. The production includes a 16-piece orchestra conducted by Gary Nelson. The play by Stephen Sondheim, Larry Gel-



Backyard Burning Allowed

March 1st - June 15th
October 1st - Dec 15th

Call Before You Burn
It's the Law!

503-632-0211

www.clackamasfire.com/documents/fireprevention/openburningregulations.pdf

bart and Burt Shevelove, opened on Broadway in 1962 and won several Tony awards, including best musical and best book.

Evening performances, Thursdays through Saturdays, begin at 7:30 p.m., and Sunday matinees begin at 2:30 p.m. Tickets are \$14 for youth, \$19 for seniors and \$24 for adults. Prices are reduced for the Thursday, Aug. 6, preview performances. For tickets, please visit www.clackamasrep.org or call 503-657-6958, ext. 5351.



Beavercreek Fire Station Calls

The following are the alarms for the Beavercreek and Clarkes response areas for Clackamas County Fire District #1 from June 20 - July 20, 2009. Submitted by Shelby Martin, Clackamas County Fire District #1

06/21 - 17:50:21 - Public Service - S RICHTER Dr

06/22 - 12:44:28 - Mobile Home Fire - CLAIRMONT Way

**Clackamas Fire Dist #1
Board Meetings
the 3rd Monday of the Month
at the Fire District Training Facility
15990 S.E. 130th Ave.
Clackamas, OR
Contact: Karen Strejc
503-742-2646**

- 06/23** - 08:15:08 - Medical - S CADLE CREEK Ln
- 06/24** - 10:24:01 - Medical - S HIDDEN Rd
16:27:42 - Medical - S BEAVERCREEK Rd
- 06/25** - 10:51:15 - Person in Distress - S Ferguson Rd
14:27:39 - Building Fire - MAIN St
15:37:49 - Medical - HILLCREST St/S MOLALLA
- 06/26** - 00:30:47 - Building Fire - DALLAS St
01:53:26 - Assist Police or other Gov. Agency - S FALLSVIEW Rd
06:14:54 - Medical - S CARUS Rd
06:15:07 - Medical - S Beavercreek/S Wilson Rd
09:58:06 - Medical - S LELAND Rd
16:24:53 - Mot Veh Acc/Injuries - S HWY 213/ S KIRK
- 06/27** - 10:52:02 - Unauthorized Burning - S ATHENS Dr
11:50:11 - Natural Vegetation Fire - MELDRUM BAR PARK Rd/RIVER Rd
12:41:14 - Medical - S LELAND Rd
- 06/28** - 14:17:03 - Medical - S HOWARDS MILL Rd
19:43:06 - Medical - S BEAVERCREEK Rd
- 06/29** - 23:01:41 - False Alarm - WASSAIL Ln/ CLAIRMONT Way
- 06/30** - 17:53:26 - Mot Veh Acc/Injuries - S RIDGE Rd/ S UPPER HIGHLAND Rd
- 07/02** - 13:49:34 - Grass Fire - S MUELLER Rd/ S HWY 213
- 07/03** - 11:10:34 - Medical - S LARKIN Rd
- 07/04** - 15:31:37 - Medical - S HENRICI Rd
22:46:12 - Medical - S IVEL Rd
- 07/05** - 12:36:46 - Assist Invalid - S UPPER HIGHLAND
21:31:08 - Natural Vegetation Fire - MADRONA
- 07/06** - 02:35:26 - False Alarm - S STONERIDGE Dr
15:07:06 - Barkdust Fire - S LELAND Rd
19:09:53 - Barkdust Fire - S LELAND Rd
- 07/08** - 18:09:10 - Mot Veh Acc/Injuries - S BEAVERCREEK Rd
- 07/09** - 00:54:01 - Medical - S FERGUSON Rd
- 07/10** - 16:16:15 - Medical - S LOWER HIGHLAND Rd
22:48:06 - Medical - S BEAVERCREEK Rd
- 07/11** - 15:38:15 - Medical - S BEAVERCREEK Rd
- 07/12** - 01:05:34 - Good Intent - S BUTTE Rd
16:07:33 - Unauthorized Burning - S LARKSPUR



**CENTRAL OREGON ORCHARD
GRASS**
From Culver
Available in Beavercreek
Call 541-788-0458 or 541-788-3162

- 17:04:14 - Medical - S WHITNEY Ln
07/13 - 10:10:29 - Mot Veh Acc/Injuries - S HWY 213/
 S FERN BLUFF Dr
07/14 - 01:07:01 - Medical - S PLUM Dr
 07:37:03 - Assist Invalid - KIMBERLY ROSE Dr
 19:53:00 - Medical - KIMBERLY ROSE Dr
07/15 - 14:06:25 - Service Call - S BEAVERCREEK Rd
07/16 - 10:14:00 - False Alarm - S CARUS Rd
 16:12:15 - Medical - MARJORIE Ln
07/18 - 00:19:27 - Medical - S LEE Dr
 10:47:50 - Medical - S BEAVERCREEK Rd
 23:25:41 - Medical - S BEAVERCREEK Rd
07/19 - 12:33:07 - Fire-Other - S LOST CANYON Rd
 15:13:55 - Building Fire - S HATTAN Rd
 16:58:23 - Grass Fire - S BEAVERCREEK Rd
07/20 - 10:24:30 - Smoke or odor removal - S
 FERGUSON
 18:02:03 - Mot Veh Acc - S UNGER/S HULT Rd



BUSINESS: 503-657-7177
 DIRECT: 503-675-4636
 FAX: 503-534-7843
 EMAIL: sold@frankhubbard.com



19753 S. Hwy 213
 Oregon City, OR 97045

BARBARA SUE SEAL
 PROPERTIES



Frank & Ellie Hubbard

Brokers

Search for Homes at:

www.FrankandEllie.com

21 Acres Ready to Build

One of the best parcels of land in Clackamas County. Full Mt Hood View, flat to slightly rolling.

Standard septic approval. Home site cleared and ready to build. Contract terms available. Seller retains right to trees and will Lease back land. Come take a look on a clear day. You will not be able to find a better building site.



\$299,000

top of Windy City Road



Five Acres of Privacy

Less than 2 miles from I205. 15737 S. Mason Heights Dr. Ore City. Remodeled 2080 sq ft, four bedroom two bath, gas heat, wood stove, extensive decking overlooking large fir trees, fruit trees and pasture for animals. Has pole barn shop and two stall horse barn. Seasonal pond. Great place to live. Close to the UGB.

Asking \$539,000

Oregon's \$27.3 Million Tax Credit Assistance Plan Approved

The U.S. Department of Housing and Urban Development (HUD) today approved Oregon's Tax Credit Assistance Program (TCAP) application, awarding \$27.3 million in federal funds to strengthen affordable housing projects throughout the state.

"Many affordable housing projects were severely impacted when the nation's economy worsened," Gov. Ted Kulongoski said. "These federal economic stimulus dollars will cover the remaining financing gaps that will move these projects forward, developing critical housing for low-income Oregonians and creating jobs in communities throughout the State."

TCAP, a HUD program, was created by the federal American and Reinvestment Act of 2009 (ARRA) to support capitalization of affordable housing tax credit projects experiencing diminished tax credit value.

Stalled projects that received awards of federal low-income housing tax credits in federal fiscal years 2007, 2008 and 2009 are eligible to participate in this federal capital investments subsidy program.

Sponsors of eligible housing projects may apply through a competitive process that examines remaining financial gaps and readiness to proceed. The process is administered by Oregon Housing and Community Services (OHCS), the State agency that manages the low-income housing tax credit program and finances low- and moderate-income housing throughout the State.

"We are pleased that HUD has approved our application and look forward to putting these funds to the best possible use in meeting critical affordable housing needs across the State," Rick Crager, OHCS deputy director, said. "The sooner these projects can be built, the sooner communities will benefit from the resulting construction activity and the sooner families in need will have stable affordable housing."

"The funding for these projects will come from a variety of public and private sources, Crager added, "and the TCAP stimulus funds will provide the last piece of the financial puzzle for many projects."

OHCS is the direct grantee for TCAP and the associated ARRA Tax Credit Exchange Program. The State agency is responsible to implement and oversee deployment of these ARRA resources in Oregon. The implementation plan for TCAP and the exchange program are available on the OHCS Web site.

Next Steps:

An application for these funds is currently under development by OHCS and is expected to be issued on the agency's Web site in the coming weeks. OHCS will hold a training session on completing the application and will provide additional assistance about eligible uses of these funds during the training.

Projects will be evaluated by OHCS based on their fi-

nancial need, project readiness, investment availability, populations served, and other criteria as outlined in the state plan. The evaluation of projects will continue throughout the summer. TCAP will sunset February 16, 2012.

OHCS is the State's housing finance agency and community services program administrator. The department provides financial and program support to create and preserve opportunities for quality, affordable housing for Oregonians of lower and moderate incomes. OHCS also administers federal and state anti-poverty, homeless, energy assistance and community service programs. For more information, visit our Web site at www.ohcs.oregon.gov.

els through discussions of their work. Chrysalis meets Wednesdays from noon to 2 p.m. in the Literary Arts Center, Room 220 in Rook Hall. For information, call 503-657-6958, ext. 2220.

August 3, 10, 17, 24, 31 - Job Seeker Information Sessions

job seeker information sessions are held each Monday at noon at CCC's Oregon City campus, Community Center, room 100. For information call 503-657-6958, ext. 2316 or visit www.WorkSourceClackamas.org.

August 6 - 26 - "A Funny Thing Happened on the Way to the Forum"

Dyson
Authorized
Sales & Service
Mon - Fri 9 - 6
Sat 10 - 5



Kirby - Filterqueen - Rainbow - Tri-Star

Complete Vacuum Cleaner Repair Sales ♦ Service ♦ Parts ♦ Supplies

Bags, Belts, Brush Rollers, Filters
Hoses, Most Brands

Commercial & Residential Cleaning Products

Oregon City Vacuum Center

503.657.3058
oregoncityvacuum.com



NEW LOCATION: 14214 Fir St., Suite G, Oregon City Hwy 213 west on Beavercreek Rd to Fir St.

Clackamas Community College August Calendar of Events

August 3, 4 & 5 - Cougar Volleyball Skills Camp

CCC volleyball coach Kathie Woods and squad members lead a three-day skills camp in the Randall Gym. The camp is open to girls in ninth through 12th grades. For more information, call coach Woods at 503-657-6958, ext. 2418 or e-mail woodsk@clackamas.edu.

August 3-6 - Cougar Soccer Summer Camp

Soccer coach Tracy Nelson and members of the Cougar team lead a four-day soccer camp for players from 6 to 12 years of age. For more information, call 503-657-6958, ext. 2099, or e-mail tracyn@clackamas.edu.

August 5, 12, 19 & 26 - Chrysalis: Women Writers

Local author Pat Lichen guides women writers of all lev-

The Clackamas Repertory Theatre (CRT) presents "A Funny Thing Happened on the Way to the Forum," a musical farce by Stephen Sondheim, Larry Gelbart (M*A*S*H*) and Burt Shevelove. The play opens August 6 and runs through August 26. Performances are scheduled evenings at 7:30 p.m. Thursday through Saturdays and on Sunday afternoons at 2:30 p.m. For ticket information, visit the Web site at www.clackamasrep.org or call Cynthia Smith-English at 503-657-6958, ext. 2761.

Additional Urban/Rural Policy Advisory Committee Meeting To Be Held

The July meeting of the Urban/Rural Reserves PAC was held on Tuesday, July 28, 2009, from 6:30 to 9:00 p.m. in

the Development Services Building at 150 Beavercreek Rd, Oregon City.

Clackamas County's 21-member Reserves Policy Advisory Committee met, discussed and voted on recommendations for several of the Urban Reserves candidate areas. The committee is made up of seven members representing cities, seven members representing citizen organizations including rural communities and Hamlets, and seven members representing other interests including development, agriculture, forestry and the environment.

There was a 10 minute public comment time allowed at the beginning of the meeting. Each speaker had only 90 seconds to get their point across. Area U8, which includes

A total of ten minutes for public comments and limited to 90 seconds for each presenter is just one of the problems of this process. This in addition to the last minute inclusion of such a large part of Beavercreek with no explanation is another. It is very apparent that the rules for testimony have been slanted toward the Cities. The Cities have not been held to the same time constraints that the rural areas have been subject to.

One PAC member in particular stands out. His name is Gordon Root. Mr. Root represents the Home Builders Association. He lays back in his seat, reads, plays with his phone and basically acts disinterested when rural testimony is given. The fact that this man has such contempt for the process is very visible. He shows a total lack of interest when it comes to citizen input. This is shameful!

After this discussion the review board will make recommendations on Urban status. These recommendations will be turned over to the County Commissioners for finalization. There will also be a public hearing August 10th. The meeting will be held at the Development Services Bldg, 150 Beavercreek Rd. in Oregon City.

Feeling Pinched?

Lousy housing market got you down? You have options. Talk to the expert who knows them.

We offer experience, superior service and low fees. Call today for a free consultation.



**CRAIG LOUGHRIDGE, GRI
Real Estate Broker/Owner**

503-632-8258 office ♦ 503-349-6892 cell
www.bybryson.com

**Get a free property value analysis
when you mention this ad.**

Bryson Realty is an Equal Housing company.

Beavercreek, that was unveiled at the July 14th meeting of the PAC, with no explanation of where this recommendation came from or who authorized it was the next on the agenda but they ran out of time. Because of this another meeting has been scheduled for Tuesday August 4th. It will be held from 6:30 - 9:00 p.m. it will be held at the same location.

The fate of the Beavercreek area will be discussed at this meeting. Beavercreek needs YOU! If you are interested in showing your support for keeping Beavercreek rural please attend this meeting. A group of Beavercreek residents are going to craft a statement to read at the beginning of the meeting and have everyone in the room that supports the statement stand while it is being read. This is necessary due to the 90 second time constraint. This is very short notice, but since the paper is published monthly, and this additional meeting has just been scheduled, It is hoped that it reaches you in time.

Our 4 Legged Friends



**My Name
is
"ANNIE"
and I'm
available for
Adoption!**

Hello... my name is "Annie" and I'm available for adoption. I'm a Labrador/Retriever mix.

I'm a 4 month old female. And I weigh between 30 and 60 lbs. As you can see I'm black in color with hanging ears and a long tail and wavy hair on my back.

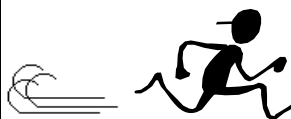
Here is what I have to say about myself!

"Hi my shelter name is Annie! I am a very cute puppy that learns very quickly! If you have a treat and ask me to sit, I can do it! I am learning quickly how to keep my kennel clean. I walk well on a leash, what more could you ask for? Oh ya, puppy kisses! If you are looking for a Great Dog I am the one! Bring the kids and your dog I will love them too!"

For more information on me or other dogs available for adoption, please call the shelter at 503-655-8628 or come by for a visit and a little one-on-one. You can also see us at the Clackamas County Dog Control website at:

<http://www.co.clackamas.or.us/dogs/adoptpet.php>

The shelter is located at 13141 S.E. Hwy 212 in Clackamas, Oregon. I'm available from 12:30 to 4:30 p.m., Thursday thru Monday. I'd sure love to get the chance to meet you. "ANNIE"



**See you next month...
The Editor!**