



# BEAVERCREEK BULLETIN

© BCCP 1999

Volume 2, Number 7

[http://www.bctonline.com/b\\_bulletin\\_online/](http://www.bctonline.com/b_bulletin_online/)

July 1999

## BCCP Update

The BCCP is still actively seeking funds for the feasibility study that will need to be done in order to determine if it is indeed feasible for the area of Beaver Creek to be incorporated as a city.

Your BCCP is still trying to work with the City of Oregon City in an effort to attain their assurance that they will not veto the efforts of the people of Beaver Creek if indeed incorporation is pursued.

The organization is also looking into any other possible solutions that would enable the citizens of Beaver Creek to take control of their own destiny and have more of a say in the changes that will affect them.

As always, your BCCP will keep you informed of further developments as they occur and encourage citizen input.

If you have any questions please feel free to contact the organization at P.O. Box 736, Beaver Creek, OR 97004.

## BOOSTER HAPPENINGS

### Grand Opening of the Community Park August 14, 1999... don't miss it!

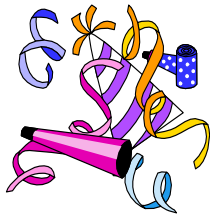
There will be a BBQ and a chance to see the plans for future development of the park. So drop by and check out the plans and enjoy the BBQ!!

Tax deductible donations toward paying for the park and future developments will be gladly accepted.

### Support Your Park!!!

Further details next month!

Questions? Email the Boosters at  
[info@beavercreek.org](mailto:info@beavercreek.org)



Also... the Beaver Creek Boosters would like to take this opportunity to say "Thank You" to all of the members of the community who donated clothing and household goods to the Annual Boosters' Rummage Sale. The sale was held on June 25th - 27th at the "Corner Park." They would also like to thank those who made donations to the "Park Fund."

The Beaver Creek Boosters have been fundraising for years to purchase land in order for Beaver Creek to have a Community Park. Their dreams became a reality last year when they purchased 24 acres on Leland Rd. (site of the 1998 "Bust"). Now they need our help. What can we do? There are payments to be made and improvements to be done, so please, come and support their efforts on behalf of our community. Get involved! The park is for all of us! Let's help make this a lasting tribute to community spirit and unity!

The Editor

## Community Calendar

### Beaver Creek Committee for Community Planning (BCCP)...

2nd & 4th Monday at the Fire Station at 7:30 p.m.

### Beaver Creek Boosters...

3rd Wednesday at the Grange at 7:30 p.m.

### Beaver Creek Community Planning Org. (CPO)...

4th Wednesday at the Grange at 7:00 p.m.

### Beaver Creek Grange...

2nd Saturday at the Grange at 7:00 p.m.

### Beaver Creek Lions...

1st and 3rd Saturday at the Grange at 7:30 a.m.

### Beaver Creek Farmers Market...

Every Saturday from 9:00 a.m. to 2:00 p.m. through October at the corner of Kamrath and Beaver Creek Rds.

### Boy Scout Troop #445...

Mondays at the Fire Station at 7:00 p.m.

### Carus Community Planning Org. (CPO)...

2nd Thursday at the Beaver Creek Christian Church at 7:00 p.m.

### Clarkes Community Planning Org. (CPO)...

1st Wednesday of each Quarter plus February & March at the Clarkes Fire Station at 7:00 p.m.

### Keep Beaver Creek Rural... 1st Tuesday at the Fire

Station at 7:00 p.m.

### The Beaver Creek Grange Announces

### The Annual BBQ Chicken Dinner

Saturday, July 31, 1999  
from 5:00 p.m. to 7:30 p.m.



\$5.00 Adults  
\$3.00 Children ages 6-12  
Children under 6 free

The Grange encourages you to call the numbers below for advance ticket sales.

David Porter 654-2556

Ed Schettig 788-0364

**So bring the family  
and support your Beaver Creek Grange!**

Back issues available upon request  
while supplies last.

Brought to you as a community service by the Beavercreek Committee for Community Planning (BCCP) and the following advertisers....

**Beavercreek Bulletin Pick-up Points**

- Just a Reminder...** the pick-up points for the Beavercreek Bulletin are:  
 Petterson's Grocery & Feed in Clarkes  
 Beavercreek Fire Station  
 Hitch 'N Post Restaurant  
 The Corner Park  
 Beavercreek Cooperative Telephone Company

Past and current "Bulletins" are also available online check it out at:  
[http://www.bctonline.com/b\\_bulletin\\_online/](http://www.bctonline.com/b_bulletin_online/)

**CPO SPOTLIGHT**


The June meeting of the CPO was held on Wednesday, June 23, 1999, at the Beavercreek Grange, on Kamrath Rd., at 7:00 p.m.

There were more than 20 residents in attendance. The guest speaker, Randy Harmon, who is the Clackamas County Pavement Manager Tech, as well as a resident of Beavercreek, discussed the County's plans for paving projects in the area for this summer.

A question and answer portion followed the presentation as citizens raised concerns regarding the lack of shoulder area for bike paths, etc.


Committee reports from various local citizens groups were given as well as more information regarding the Community Park grand opening.

There being no further business the meeting was adjourned. The next meeting will be held on Wednesday, July 28, 1999 at the Beavercreek Grange at 7:00 p.m. If you need further information, please call 632-8370 and leave a message.




**TSR Marketing**  
*We Take Your Ideas & Make It Happen*

**Tammy Stevens**  
 PO Box 736  
 16682 S Buckner Creek Road  
 Beavercreek OR 97004-0736  
 Email [tsr@macnet.com](mailto:tsr@macnet.com)  
 Voice & Fax (503) 632-3552




**Greg's Automotive**  
 Complete Automotive & RV Repair  
 Computer Diagnostics

24230 Beavercreek Road  
 Beavercreek, Oregon 97004  
**(503) 632-3017**



**HITCH'N POST SALOON**  
**Wayne & Bertha Hamilton**

Pool ☆ Darts ☆ Golf  
 Oregon Lottery  
 On Line Games ☆ Video Poker

21950 S Beavercreek Road  
 Beavercreek OR 97004  
 Hours: 8:00 a.m. - 2:00 a.m.

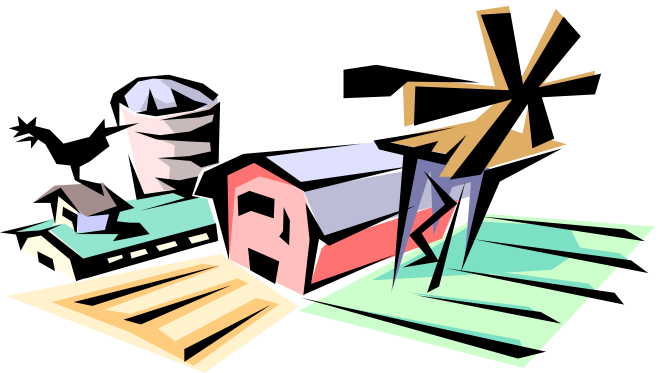
Phone: (503) 632-3190  
 Fax: (503) 632-4130



*Fresh Cut Bouquets*  
 \$3.00 / Bunch

16078 S. Spangler Rd.  
 Fridays, Saturdays and  
 Sundays

**Insurance**  
**Aloha Insurance Center**  
 Since 1979  
 Safeco  
 Mutual of Enumclaw  
 Auto • Home • Life • Health • Renters  
 Boat • Business  
 Please Call  
 Mike Crider  
 (503) 649-5679

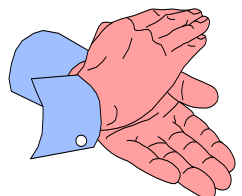


**Community Citizen Involvement Recognition**


The "Bulletin" would like to start a new feature which acknowledges the efforts of the young people of the Beavercreek area on behalf of the community, i.e.: public service.

To start off the added feature we would like to feature **Ryan Proffitt**, for his contribution on behalf of the community. Ryan, a Life Scout, as a requirement to attain his rank as an Eagle Scout, was responsible for the clearing and hauling of brush along the roadside and west boundary of the Community Park on Leland Rd. The brush was quite tall and needed to be cleared in order to reduce the risk of fire danger to surrounding properties.

**Great Job!**  
**Way to go Ryan!**



If you know of a young person you would like to have honored for their efforts on behalf of the community, let us know by e-mailing the "Bulletin" at:  
[b\\_bulletin.info@bctonline.com](mailto:b_bulletin.info@bctonline.com)



"Beavercreek Bulletin"  
 and  
 "Beavercreek Bulletin Online"  
 Published monthly by the BCCP ©  
 Ad Rates:  
 \$5/mo - business card ad  
 \$7.50/mo - 4" x 3.25"  
 Call for Details...