



BEAVERCREEK BULLETIN

© BCCP 2002

Volume 5, Number 7

["http://www.bctonline.com/b_bulletin_online/"](http://www.bctonline.com/b_bulletin_online/)

July 2002

Garbage Collection/Recycling Rates to Take a Hike July 1 in Clackamas County

The Clackamas County Board of Commissioners has approved a rate hike for the collection of garbage and recycling beginning July 1. The board approved the increase during its regularly scheduled meeting June 6.

The rate hike will vary by type of service and location, but the most common weekly service includes the 32 gallon can and recycling container placed on the roadside. Urban customers with this type of service (which also includes yard debris pickup) can expect a six percent increase for collection from \$19.90 per month to \$21.10 per month. Rural area customers will see the same service rise 6.6 percent to \$19.50 and Distant Rural rates will climb 13 percent to \$22.75. Rural and Distant Rural customers do not have the yard debris option.

Customers should contact their service providers for details about the increase and to make certain they have the services that meets their needs (a smaller can may be adequate.) The companies are also sending out notices to their customers about the collection increase.

The rate increase is due to a number of reasons, including disposal rate increase of 6.3 percent beginning July 1, a decrease in market value for recycled materials and operating cost increases for collectors.

For more information call Rick Winterhalter at 503-353-4466.



**Burning Days End July 15th
and Start Again in October**

See What You Missed?

The annual meeting of the Beaver Creek Cooperative Telephone Company was held on Saturday, June 1, 2002, at the Moss Campus of Oregon City High School.

The doors opened at 9:30 a.m. with the meeting beginning a little past 10:30 a.m. Between 450 and 500 people attended the business meeting and the BBQ, hosted by Buster's Texas Style BBQ.

The new website for "bctelco.com" was unveiled at the meeting with a computer setup and available for

Community Calendar

Beavercreek Committee for Community Planning (BCCP)...

"As needed" basis at the Fire Station at 7:30 p.m.

Beavercreek Boosters...

3rd Wednesday at the Grange at 7:30 p.m.

Beavercreek Charitable Trust...

2nd Tuesday at the BCT Henrici Community Room at 7:30 p.m.

Beavercreek Community Planning Org. (CPO)...

4th Wednesday at the Grange at 7:00 p.m.

Beavercreek CPO Directors Meetings...

Tuesday before 4th Wednesday at the Fire Station Ready Room 7:00 p.m.

Beavercreek Grange...

2nd Saturday at the Grange, potluck at 6:00 p.m., meeting at 7:00 p.m.

Beavercreek Lions...

1st and 3rd Saturday at the Grange at 7:30 a.m.

Boy Scout Troop #445...

Mondays at the Fire Station at 7:00 p.m.

Boy Scout Troop #139...

Mondays at the Grange at 7:00 p.m.

Carus Community Planning Org. (CPO)...

2nd Thursday at the Beavercreek Christian Church at 7:00 p.m.

Clarkes Community Planning Org. (CPO)...

1st Wednesday of each Quarter plus February & March at the Clarkes Fire Station at 7:00 p.m.

Oregon City/Beavercreek Mom's Club...

1st Monday at the United Methodist Church, 18955 South End Rd., at 9:30 a.m.

Oregon City School Dist Board...

2nd Monday at the District Board Room at 7:00 p.m.

members to sit down and surf the site.

The issue of EAS (Extended Area Service) Surcharge for Data Usage came up again this year. There was a member present who objected to the increases and demanded to get her money back. Tom Linstrom, CEO of BCT, explained to the members that in the 18 months prior to the August 1999 increases BCT did a study to determine the cause for the large increase in EAS costs. It was determined, by studying

Brought to you as a community service by the Beavercreek Committee for Community Planning (BCCP) and the following advertisers...



JULIE PETERS
Travel Consultant

19115 S. Beavercreek Rd Phone: (503) 632-3474
P.O. Box 772 Toll Free 1-800-678-7188
Oregon City, OR 97045 Fax: (503) 632-8696
e-mail: jpeters577@aol.com

line traffic, that 5% of the customers were causing 60% of the increase in cost. This was determined to be due to these customers using the voice network for data traffic and Internet services.

BCT adopted a plan for the customers who use the voice network for data services to help cover the cost of usage. Management felt that these customers should help pay to support the increased cost of the EAS network.

Twelve members who were assessed this EAS surcharge disagreed and filed a complaint with the PUC (Public Utilities Commission). A hearing was held September/October 2000 and BCT was told to cease and desist from the practice. BCT filed a suit in the Clackamas County courts to oppose the PUC's ruling and get a legal opinion on its EAS services and pricing.

The PUC and BCT have reached a settlement and BCT has agreed to refund up to \$10,000.00 to the members who paid the EAS Surcharge from August of 1999 to October 2000. This measure was taken in order to save further legal costs as BCT felt that the PUC would appeal the ruling by the Clackamas County courts in favor of BCT and BCT wanted to save its members any further legal costs.

BCT is in the process now of giving credits on the members' bills who paid the surcharge, in the amounts ranging from one cent to several hundred dollars

Beavercreek Saloon

formerly the Hitch 'N Post Saloon

Wed & Thurs: Karaoke from 7:00 - 11:00
Wed: Taco Wednesday begins at 5:00
Fri & Sat Evenings: Live music 9:00 - 2:00
Sun: Bloody Mary Specials & Free Pool

Under New Ownership

21950 S. Beavercreek Rd. 503-632-8647



Church Directory for the Beavercreek, Carus, Clarkes and Oregon City Areas



Beavercreek Baptist Church

15660 S. Leland Rd.
(503) 632-7505

Sunday School: 9:00 a.m.

Sunday Worship: 10:30 a.m.

Youth: Tuesdays at 7:00 - 8:30 p.m.

College: Wednesdays at 7:00 p.m.

Ladies Bible Study: Wednesdays at 10:00 a.m.

Women's Breakfast: 1st Saturday at 9:00 a.m.

Beavercreek Christian Church

21949 S. Molalla Ave.
(503) 632-4218

Sunday School: 9:00 a.m.

Sunday Worship: 10:00 a.m.

Youth Group: Wednesdays at 6:42 p.m.

Marriage Enrichment Class: Sundays at 6:30 p.m.

Clarkes United Methodist Church

18773 S. Windy City Rd.
(503) 632-7778

Sunday Worship: 9:00 a.m.

Sunday School: 10:30 a.m.

United Methodist Women: 2nd Wed., 9:30 a.m.

Lower Highland Bible Church

24353 S. Ridge Rd.
(503) 632-4741

Sunday Worship: 11:00 a.m.

Sunday School: 9:45 a.m.

Mid-Week Worship: Wednesdays at 7:00 p.m.

Bundox Youth Group: Wednesdays at 7:00 p.m.

Men's Group: Thursdays at 7:00 p.m.

St. Paul's Episcopal Church

822 Washington St.
(503) 656-9842

Sunday Worship: 7:30 a.m. & 10:00 a.m.

Sunday School: 9:00 a.m.

Wednesday Evening Worship: 7:00 p.m.

AA Meetings: Wednesdays at 7:00 p.m.

Ten O'Clock Church

aka **United Church of Christ**
23345 S. Beavercreek Rd.
(503) 632- 4553

Worship Meetings: Sunday Mornings at 10:00 a.m.

AA Meetings: Mondays at 7:30 p.m., open to the public

Trinity Lutheran Church

16000 S. Henrici Rd.
(503) 632-5554

Sunday Services: 8:00 a.m. & 11:00 a.m.

Sunday School: 9:30 a.m.

Wednesday Evening Service: 7:00 p.m.

Church Directory
for the
Beavercreek, Carus,
Clarkes and Oregon
City Areas continued



Bryn Seion Welsh Church
22132 S. Kamrath Rd,
(503) 630-5317

Sunday Worship: the 2nd & 4th Sunday at 11:00 a.m.
A nondenominational Christian Church - open to all!
Potluck following the service

Oregon Trail Free Will Baptist Church
14595 S. Henrici Rd.
(503) 557-8559

Sunday School for all ages: 9:45 a.m.
Sunday Worship: 10:55 a.m.
Sunday Evening Bible Study: 6:00 p.m.
Sunday Youth Group: 6:00 p.m.
Thursday Evening Bible Study: 7:00 p.m.
AWANA Childrens Program: Thursdays, 6:15 p.m.

depending on the usage payments.

BCT is continuing to bill members for the high EAS usage so that the people who don't use it aren't paying or subsidizing those who do.

One member persisted in wanting an answer from management as they did not feel that it was fair. Tom Linstrom then asked the members present if they wanted to subsidize the high users and the question was met with a resounding "No."

The issue of the content of a certain channel was also addressed and a member wanted to take a vote on having the channel removed. Other members addressed the meeting stating their concerns regarding censorship issues since the channel in question is a "Pay for View" channel and only available if you pay extra to have it in your home. He was asked to change his motion to allow BCT to send out a questionnaire to the membership explaining the

question and asking for their input as Tom Linstrom did not think it wise to address the issue at the meeting without the members being duly notified and informed of the action as well as giving all a chance to weigh in on the subject. The motion was so amended and a questionnaire and information will be sent to all members.

Yours truly asked the Board, if BCT was thinking about or had ever considered going into the cell phone business. Tom Linstrom stated that BCT is looking into a service called "Phone to Go" that would allow a member to have a cell phone with the same phone number as their house phone so that the house phone could in affect go with them wherever they went.

A member asked for more information on the hacking of the e-mail server at BCT and was given an explanation. I could not resist the temptation to get up and let everyone know that if they needed more information about what had transpired that they could read about it in the June issue of the "Beavercreek Bulletin." I apologize for the shameless plug for the paper, but I couldn't help myself.

The need for the community to get more involved in the development of the park was also discussed as this is "our" community park. We will all use it, I'm assuming, so we shouldn't sit back and wait for only a handful of community minded individuals to put it all together for us. Enough for my soap box for the moment!

KUMON[®]
MATH & READING CENTERS www.Kumon.com

LISA K. WRIGHT-WILSON
DIRECTOR/OWNER

KUMON CENTER OF OREGON CITY
358 WARNER MILNE ROAD, SUITE G118
OREGON CITY, OR 97045

Tel: 503-657-6961 email: LisaWils@gateway.net

If you have any further questions about what you missed, if you didn't attend the annual meeting, you can call BCT at 503-632-3113 and talk to a Customer Care Representative. If they can not help you they will see that you are directed to the proper individual who can answer your question. *The Editor*



“Beavercreek Bulletin”
and
“Beavercreek Bulletin Online”
Published monthly by the BCCP ©
Ad Rates:
\$5/mo - business card ad
\$7.50/mo - 4” x 3.25”
Call for Details...
Marsha 503-632-3572
or Sharon 503-632-6525

Clackamas Community College July Calendar of Events

July 1 - College Success Workshop: Reading Skills

College Success workshops are held Mondays at noon in the Skylight Room near the cafeteria in the Bill Brod Community Center. The Reading Skills session will share tips for better textbook comprehension. For information call the Counseling Department at 503-657-6958, ext. 2213.

July 3, 10, 17, 24 & 31- Chrysalis: Women Writers

Local author Pat Lichen guides women writers of all levels through discussions of their work. Chrysalis meets from noon to 2:00 p.m. in Clairmont 151. For information, call 503-657-6958, ext. 2444.

July 4 - Independence Day

The college will be closed for the Independence Day holiday.

July 8 - College Success Workshop: Project Management

College Success workshops are held Mondays at noon in the Skylight Room near the cafeteria in the Bill

COUNTRY BARK, INC.

We've Moved !!!



23505 S. Hwy 213 - Just South of Carus School

Bark Dust - Sawdust - Shaving - Potting Mix

Rock - Sand

U-HAUL -.- WE DELIVER

Rudy & Norma

503-632-3739

Brod Community Center. The Project Management session looks at ways to manage homework assignments. For information call the Counseling Department at 503-657-6958, ext. 2213.

July 10 & 17 - Rainstick Magic

Have you ever wondered how a rainstick makes its sound? Discover the magic by building one to take home. Explore these instruments and how they are used in cultures around the world. This workshop at the John Inskeep Environmental Learning Center is for children ages 8-12. It takes place from 4:30 to 5:30 p.m. both days. The instructor is Alison Heimowitz and the cost is \$10. For more information, call 503-657-6958, ext. 2633.

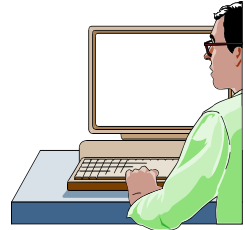
July 15 - College Success Workshop: Note-Taking Skills

College Success workshops are held Mondays at noon in the Skylight Room near the cafeteria in the Bill Brod Community Center. The Note-Taking Skills session will share tips for better textbook comprehension. For information call the Counseling Department at 503-657-

Computer Services For a Flat Fee of \$40.00

Mon - Fri 10:00 - 4:00

503-656-0692



6958, ext. 2213.

July 16 - Create A Backyard Habitat

What are the needs of our wildlife friends? Is it possible to see wildlife in our own backyard? In this "Curious Naturalist" workshop at the John Inskeep Environmental Learning Center participants will discover the common critters found in backyards throughout Oregon. "Curious Naturalist" workshops are suitable for children 6 to 12 accompanied by a parent. The workshop takes place from 6:30 to 8:30 p.m. and the fee is \$5 for the family. For more information, call 503-657-6958, ext. 2633.

July 18 - Radical Reptiles!

Turtles, lizards and snakes, oh my! Children from 3 to 5 years old will delight in learning about these scaly, cold-blood creatures in this program at the John Inskeep Environmental Learning Center. The program takes place from 10:00 to 11:30 a.m. Children must be accompanied by a parent. The fee is \$8. For information, call 503-657-6958, ext. 2633.

July 22 - College Success Workshop: Stress Management

College Success workshops are held Mondays at noon in the Skylight Room near the cafeteria in the Bill Brod Community Center. The Stress Management session will provide suggestions for reducing stress. For information call the Counseling Department at 503-657-6958, ext. 2213.

July 22 - Aging Issues/Getting Around

A panel of transportation providers, including Clackamas County Social Services Transportation



Fresh Cut Bouquets

\$3.00 a bunch
Road-Side Stand

16078 S. Spangler

Piano Lessons**503-632-8367***Muriel Arndt, Instructor*

24290 S. Beavercreek Rd. Beavercreek, OR 97004

Reaching People, Tri-Met Lift, Clackamas County Transportation Consortium, Travel Training Program and senior centers discuss transportation options for elderly and disabled residents of Clackamas County. They'll discuss how to access a variety of transportation services, costs and eligibility. Aging Issues sessions are held the fourth Monday of each month from 1:30 to 3:30 p.m. at the Gladstone Senior Center, 1050 Portland Ave., Gladstone. The sessions are free and open to the public. For more information, call 503-657-6958, ext. 2456.

July 25 - Fun With Recycled Art

Explore the amazing world of recycling in this workshop at the John Inskeep Environmental Learning Center. Kids

from 8 to 12 can make wacky art and craft projects from recycled materials found at home. Bring in old soup cans, egg cartons, toilet paper tubes, paper cups, old clean socks and other recycled goodies. The class takes place from 2:00 to 4:00 p.m. and the fee is \$8.

July 29 - College Success Workshop: Test-Taking Skills

College Success workshops are held Mondays at noon in the Skylight Room near the cafeteria in the Bill Brod Community Center. The Test-Taking Skills session will share tips to help improve test scores. For information call the Counseling Department at 503-657-6958, ext. 2213.

July 30 - Terrific Trees!

From trunk to branches to leaves, children from 3 to 5 years old can explore fascinating facts and complete a tree craft in this "ELC Seedling" class at the John Inskeep Environmental Learning Center. Instructor Savina Darzes leads the class from 10:00 to 11:30 a.m. Children must be accompanied by an adult. The fee is \$8. For more information, call 503-657-6958, ext. 2633.

July 29 - August 1 - Girls' Basketball Camp

The coaching staff and players from the CCC



Nobody sells more property in Beavercreek than MAIN PROPERTIES!!
Call for a FREE Market Analysis

22008 S. Beavercreek Rd.
 Beavercreek, Oregon 97004
 503-632-7330

125 Molalla Avenue
 Oregon City, Oregon 97045
 503-657-7047

Garden Center & Grower

22289 So. Molalla Hwy. 213
Oregon City, Oregon 97045

Hours:

Mon - Sat 8 - 6, Sun 10 - 5

EVANS FARMS

(503) 632-3475 • Fax: (503) 632-4967



Women's Basketball Team lead a four-day girls' basketball camp filled with skill development, competitions and games. The camp runs from noon to 4 p.m. each day. The \$80 fee includes T-shirt and basketball. For more information or to request an entry form, call coach Jim Martineau at 503-657-6958 ext. 2479.

Carus School News

Students Help with Erosion Control

Students from Ms. Parker's fifth grade class have become involved in the prevention of soil erosion on the west bank of the playground area. Carus School would like to thank the following community members for their help and donations with this community service project:

Miss Molyneux's room has been involved in worm composting to add to the soil with the planting.

Eric Gilson from Northwest Transplants in Molalla helped arrange plants. The students dug holes, put worm compost in the holes and then planted the various shrubs.

Ms. Pease from Evans Farms donated 35 beautiful ground cover plants and soil enrichment materials for the project.

Ed Armstrong, Canby Grant Coordinator, donated forty-two plants and funding.

Swede Salo of Wilco Farms donated the tools for digging and working the soil.

The Seifert family donated cash to purchase supplies with. We would like to thank everyone for their generosity and time.

Youth Involvement Network Summer Projects

By Sara Baugh, AmeriCorps Volunteer

Explore arts & crafts, environment & nature, and civic

& community service! CampFire USA Portland Metro Council is offering summer programs for the Canby School District. The programs will be in July for youth entering grades 6 - 9. They will be two week sessions, Monday through Friday, 9:00 a.m. to 4:00 p.m. The first session is July 8 -19 and will be at Carus Elementary working in and around the White Building. It will be a great service project with arts, crafts, games and fun included. The second session is July 22- August 2 and will be at Canby Community Park in Canby. Here, there will be a focus on environmental projects including building a wildlife viewing blind plus crafts and fun as well. These programs will be led by AmeriCorps

MARK & LORRI PETTERSON
Owners



Petterson's Grocery & Feed
Groceries • Feed • Deli

25760 S. Beavercreek Rd
Beavercreek, OR 97004
(503) 632-8337

Petterson's Grocery & Feed

\$1.00 OFF

Any Large Take & Bake Pizza

or

Your Hamburger of Choice

Offer Good July 1 - 31, 2002

members Sara Baugh and Nicole Isaakson, who have been working on service projects at Carus and Eccles Elementary throughout the 2001-2002 school year.

Teaching Assignments for 2002-2003 -

We are pleased to announce the following teaching assignments for the 2002-2003 school year:

- Kindergarten: Mrs. Monte
- First Grade: Mrs. Ritter
- First Grade: Mrs. Frazier
- Second Grade: Mrs. Michimoto
- Second Grade: Mrs. Ekblad
- Third Grade: Miss Molyneux
- Third Grade: Mr. Salisbury
- Fourth Grade: Mrs. Fitch
- Fourth Grade: Ms. Keyser
- Four/Five Blend: Mrs. Dubuy
- Fifth Grade: Mr. Bellamy
- Fifth Grade: Ms. Parker
- Sixth Grade: Mr. Bartsch



Do you have something you would like to sell?

You can place an ad in the Bulletin for \$1.50/ issue.

Call Marsha at 503-632-3572 or Sharon at 503-632-6525 and leave a message and they will get back to you

Sixth Grade: Ms. Scofield

Openings at Carus Preschool:

The Carus Preschool, located at Carus Elementary School, has openings for children ages three to five in classes beginning September 2002. Bus service is available for students on the Carus Elementary School bus route. If you are interested please contact the registrar, Heather Wright at 503-632-7875.

The Beavercreek Restaurant

formerly the Hitch 'N Post Restaurant

Hours:

Mon - Thurs: 11:00 - 9:00
 Fri: 11:00 - 10:00
 Sat: 8:00 - 10:00
 Sun: 8:00 9:00

Breakfast Still Served All Day

Under New Ownership
 503-632-3190

DSL Promotions at Beaver Creek Telephone

Beaver Creek Cooperative Telephone Company has some promotions at this time on DSL service that are available to the membership.

If you sign a one year contract for DSL you will receive a free DSL Modem (a \$145.00 value).

If you sign a 2 year contract you will receive the DSL

modem and the setup free (a \$295.00 value).

This offer does not apply to the 256k DSL service, but to the 512k and 768k services.

512k service is \$64.90/mo and includes your Internet access. The 768k service is \$79.90/mo and also includes the Internet access.

This promotion actually started several months ago, but was not heavily advertised due to a backorder of DSL equipment. BCT anticipated great demand, but the vendors were short on equipment so BCT had to wait a few extra weeks to get the equipment in, so they didn't advertise to prevent a backlog of members wanting service.

If you have any further questions please contact Beaver Creek Cooperative Telephone Company at 503-632-3113.

Clarkes School News

Message from Mrs. Nickoloff:

My final message to the members of the Clarkes Elementary School community brings sadness to my

Back issues available upon request while supplies last.

heart. As I reflect on the time I have spent here I am amazed that four years could go so quickly. Clarkes is a very special place filled with very special people. I believe that I was given a unique opportunity that has allowed me to grow both personally and professionally. I am honored to have had the opportunity to spend time with these children whom I have come to know and love. I will cherish my memories forever. I will take what I have learned from my experiences at Clarkes as I begin in a new school. I want to thank everyone I have had contact with during my four years. You all have taught me so much. I will miss you.

Class Assignments For Next School Year:

At this point, we are planning on the following assignments for next year:

A.M. Kindergarten will consist mostly of Dickey Prairie

area students

P.M. Kindergarten will consist mostly of Clarkes area students

(Letters will be mailed to each family to confirm A.M. or P.M. assignments)

1st Grade assignments will be posted on the bulletin board outside the office next week.

(**Please** come up to look at the list instead of calling...)

2nd Graders will stay with the teacher they had this year

3rd Graders will all be with Mrs. Kosovitz

4th Graders from Mrs. Koos' room will stay with her

4th & 5th Graders from Mrs. Kosovitz' room will be assigned to the new teacher

5th Graders from Mrs. Scriven's room will stay with her.

Clackamas Community College Offers Online Payments

Students can now pay their college tuition and fees at Clackamas Community College from the comfort of their home computer. It's the latest addition to a growing list of online services available to CCC students.

Online fee payment is available to admitted, currently enrolled and returning students - with a major credit



Beavercreek Charitable Trust Information Line

503-632-0228

Volunteer for Co Burn Days - Option 6

Volunteer for Upcoming Workcrew Days - Option 7

Small-town service from a big-time name.



Thinking about selling your home in Beavercreek, Mulino or Oregon City? Choose the Northwest's leader and get the greatest exposure and best service anywhere. Windermere has sold more homes than any other brand in the Northwest. And Windermere Heritage Real Estate will expose your South Clackamas County home to the greatest number of buyers. **Big service, big exposure, competitive fees.** Call **Craig Loughridge** for more information about getting your home **SOLD** today.



Craig Loughridge

REALTOR®

503-632-8258

www.nwhomepro.com

*Windermere Heritage Real Estate
Main Office: 717 SE 1st Ave., Canby
An Equal Housing Broker*

card - via WebAdvisor, an online student advice service. Students log into the WebAdvisor site at "http://www.clackamas.cc.or.us/reg/webadvisor.htm" (without the quotes) and select the "Make a Payment" option.

Using a major credit card, students can pay tuition and fees online. The service is not available to students with an outstanding balance from a previous term.

CCC offers a variety of online services to students including registration, advising, ordering textbooks and library resources. In addition, online classes are growing rapidly at CCC and community colleges around the state. For more information, call 503-657-6958, ext. 2243.

CCC Signs Jesuit Standout Leah Drebin

Clackamas Community College has signed two players to its new women's soccer program that will begin playing games this fall.

Jayne Dodrill, who played for Estacada High School, was the first player to sign with CCC. And, earlier this month, coach Tracy Nelson signed Leah Drebin, a player for perennial soccer powerhouse Jesuit High School and a resident of Oregon City. Nelson coached Drebin while she played at Jesuit.

Tryouts for the Clackamas women's soccer program were held from 2:00 to 4:00 p.m. Friday, May 31, at the practice field located just east of the main college entrance in Oregon City. The tryouts were open to women who will be college freshmen or returning

sophomores in the fall.

The college hired Nelson in March, and she is recruiting a team of 20 to 24 players. Tuition scholarships are available for players.

Clackamas will play in the Northwest Athletic Association of Community Colleges southern region, which includes Clark, Lower Columbia, Southwestern Oregon, Centralia, Green River, Tacoma and Bellevue community colleges. The team's opening game is scheduled for Friday, Sept. 6, against Treasure Valley Community College. The game will be played at Clackamas.

Initially, games will be played on an existing field at the CCC track. The college is applying for grant funding that will help develop fields that will be available for all levels of play and practice. For more information, call 503-657-6958, ext. 2099.



Beavercreek Fire Station Calls

Here are the Beavercreek Fire Station responses from May 20 - June 20:

May 20 - 15:59 - first aid - Lower Highland Rd
May 21 - 06:25 - fire alarm - S. Beavercreek Rd
 14:04 - chest pain - S. Upper Highland Rd
May 23 - 22:44 - med. aid - Mossy Rock Ct
May 24 - 09:38 - burn complaint - S. Schubel Ln
 19:57 - unauth burn - S. Beavercreek Rd
May 25 - 21:39 med aid - S. Tonya Ct
May 26 - 11:15 fire alarm - S. Leland Rd

Oregon Fishing Club

Private fishing
and camping
access for the
whole family



Call Toll Free
(877)521-8947
for info packet

We have six lakes and ponds stocked with trout, bass and bluegill less than 10 minutes from Beavercreek. Seven more properties less than 30 minutes drive.

May 27 - 04:06 - slumper - S. Hwy 213
 11:13 - barn fire - S. Stevens Rd
 19:51 - motor veh acc - S. Hwy 213 @ MP 2
May 29 - 10:13 - med aid - S. Howards Mill Rd
 14:36 - med aid - S. Maple Lane Rd
 18:30 - med aid - S. Butte Rd
May 30 - 03:17 - barn fire - S. Windy City Rd
 04:16 - med aid - S. Jason Dr
 11:07 - med aid - S. Beavercreek Rd
June 01 - 19:32 - med alarm - S. Upper Highland Rd
June 03 - 09:07 - barn fire - S. Sylvan Av
 13:21 - barn fire - S. Sylvan Av
 16:22 - commercial fire - S. Donovan Rd
 21:39 - med aid - S. Brockway Rd

Beavercreek Bulletin Pick-up Points

Just a Reminder... the pick-up points for the Beavercreek Bulletin are:

Petterson's Grocery & Feed in Clarkes
The Corner Park
Beavercreek Grocery
Beavercreek Restaurant
The Postal Annex at Berry Hill

Past and current "Bulletins" are also available online.
Check the website out at:

http://www.bctonline.com/b_bulletin_online/

21:54 - burn complaint - S. Ferguson Rd
June 04 - 13:09 - med aid - S. Carus Rd
15:00 - mot veh acc - S Henrici/ S. Ferguson Rds
20:45 - illegal burn - S. Bronco Ln
June 05 - 08:16 - med aid - S. Carus Rd
June 06 - 13:34 - illegal burn - S. Woodglen Wy
18:43 - illegal burn - S. Leland Rd
June 07 - 03:40 - med aid - S. Butte Rd
June 08 - 21:34 - med aid - S. Dianne Ct
June 09 - 01:05 - mot Veh Acc - S. Beavercreek/ S. Ferguson Rd
16:33 - mot veh acc - S. Viola Welch Rd/ S. Dianne Dr
20:15 - burn complaint - S. Carus Rd
21:09 - arc pwr line - S. Dianne Dr
June 10 - 11:52 - fire alarm - S. Killdeer Rd
16:26 - mot veh acc - S. Beavercreek Rd
20:33 - illegal burn - S. Ferguson/Henrici Rds
June 11 - 09:18 - med aid - S. Schram Rd
11:46 - med aid - S. Richter Rd
14:39 - auto/ped ot veh acc - S. Ferguson Rd
June 12 - 08:25 - med aid - S. Saddle Ln
16:18 - med aid - S. Hwy 213
21:07 - auto/motorcycle - S. Henrici Rd
June 13 - 11:59 med aid - S. Crestview Dr
June 14 - 18:36 - burn complaint - S. Henrici/ S. Ferguson
June 15 - 04:24 - brush fire - S. Hwy 213
20:27 - mot veh acc - S. Lower Highland Rd
June 17 - 17:16 - mot veh acc - S. Beavercreek / S. Wilson Rds
June 18 - 09:03 - fire alarm - S. Beavercreek Rd



Western Marketing Box 1158
Lake Oswego OR 97035

503.632.7115
Business-to-Business
Marketing and Advertising

June 19 - 20:43 - med aid - S. Moore Rd

June 20 - 10:57 - med aid - S. Kirk Rd

Hemingway's Spain is Backdrop for pARTy 2002

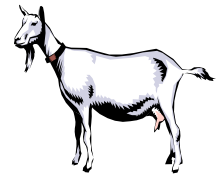
Think expatriate writers, bull fights, rebel soldiers and red wine and you've got the setting for The pARTy 2002 on Saturday, August 10, in West Linn.

pARTy España, Hemingway's Spain, is the theme for the annual fund raiser for the arts in Clackamas County. Sponsored jointly by Clackamas Community College and the Arts Action Alliance, the annual soiree brings together artists, art supporters and community members for a grand theme party. pARTy España will be reminiscent of Spain during the time of Ernest Hemingway's stay there. Rich colors, lively music and dance, robust food, artwork and literature will grace the beautiful site.

This year's pARTy will be held at a private estate in the hills above West Linn. Ticket information is available by calling Karen Martini at 503-657-6958, ext. 2580, or Janet Meister at 503-657-6958, ext. 2402.

The annual pARTy has raised more than \$150,000

Dwarf Nubian Goats



Companion, Brush & Dairy

Milking Does \$150.00 & up

Wethers \$50.00

Doelings \$75.00

Breeding Stock

503-632-7037 & 503-632-3874

for art in Clackamas County over the last eight years. Proceeds are shared by CCC to bring unique cultural events to the county and by the Arts Action Alliance, which supports artists through workshops, marketing and networking.

Clackamas County Committee for Citizen Involvement Met June 27

The Committee for Citizen Involvement (CCI) of Clackamas County was scheduled to meet June 27 from 7:00 p.m. to 9:00 p.m. at 906 Main St., Oregon City on the 2nd floor.

The proposed agenda included assigning projects based on the work plan and providing suggestions for the notices sent by the Planning Division to citizens and for the best practices manual for Citizen Planning Organizations (CPOs) when responding to land use



Current Mortgage Rates 15 year rates under 6.25%

- 1st Time Buyers
- Debt Consolidation
- Cash Out
- Construction Loans
- Commercial Property

FHA, VA Conforming, Jumbo & Nonconforming loans available

"Keeping it Simple"

Call Julie Peters

Tele: 503-312-3746

Fax: 503-723-9399

julie@turnkey-mortgage.com

applications.

The Committee for Citizen Involvement has four vacancies. Please call the number below for more information.

The function of the Committee for Citizen Involvement is to provide opportunities for citizens to participate effectively in Clackamas County's land use planning and decision making process.

For more information call Michelle Majeski at (503) 655-8552.

Hard Work Pays Off

It's true what they say, "hard work pays off." When Mark and Lorri Petterson bought Petterson's Grocery and Feed back in August of 1997 they had many dreams of what they wanted their place to become.

They have been working non-stop since the end of February to make those dreams come true.

They decided to convert the Feed (hay) side of the store into a sports deli. On June 12th they opened the doors and on the 15th they had a **Grand Opening** and customer appreciation celebration. Free hot dogs were served from 1:00 - 3:00.

Lorri, with the help of Doris Young, has brought a new menu to the table. Patrons can order a meal or even snacks. There is ice cold beer, wine and a bottomless glass of pop for \$1.25!

Busy families with children are what Mark and Lorri had in mind when they decided to expand. All menu items can be to go or you can dine in. They still have the wonderful Take 'N Bake pizza available as well.

So... cut out your coupon found elsewhere in this issue and come on in!!!

Hours are Sunday - Thursday till 9:00 p.m., and Friday and Saturday till 10:00 p.m.

Mark and Lorri want to take this time to thank everyone for their support and they hope to see you all soon!

Mark and Lorri have been working tirelessly for months to get this new venture off the ground. We hope you will stop by Petterson's and check out the new addition to their establishment and enjoy the good food and atmosphere. This will indeed be a great asset to the Clarkes community... and Beavercreek too. The Editor

Curious Naturalist Looks at Rainsticks

Children from 8 to 12 years old can discover the inner workings of rainsticks during "Curious Naturalist" workshops July 10 and 17 at the John Inskeep Environmental Learning Center at Clackamas Community College.

Children will explore the use of rainsticks in cultures around the world and build one to take home. Alison Heimowitz will teach the class from 4:30 to 5:30 p.m. each day. There is a \$10 fee.

Curious Naturalist classes are geared toward children accompanied by a parent. Each class has a limit of 10 children. To register contact the Oregon City Community School at 503-657-2434. For more information about classes at the ELC, call 503-657-6958, ext. 2351.

Custom Built Trailers

Hitches & Wiring

Jerry Thommen
503-632-7407

CCC Hosts Third Annual Oregon City Relay for Life

Run, walk or crawl in the third annual Oregon City Relay for Life at the Clackamas Community College track on Friday, July 12, and Saturday, July 13.

Individuals and teams can join in this 24-hour tribute and benefit event sponsored by the American Cancer Society. For more information, entry forms and/or volunteer opportunities, call Debbie Foresman, 503-630-2315.



**Clackamas Fire Dist #1
Board Meetings
the 3rd Monday of the Month
at the Fire District Training Facility
15990 S.E. 130th Ave.
Clackamas, OR
Contact: Karen Strejc
(503) 655-8542 x 238**

CLACKAMAS COUNTY

Pot Hole Hotline

PLEASE CALL 650-3262

☎ 24-Hour Message Line ☎

**Clackamas County Natural Hazard
Mitigation Plan Public Workshop,
July 23, 2002**

Since September 2001, Clackamas County agencies, organizations and citizens have been engaged in the development of a Countywide Natural Hazard Mitigation Plan. Floods, earthquakes, landslides, wildfires, severe winter storms, windstorms and volcanoes can cause loss of life and property, disrupt businesses, and impact the day-to-day lives of Clackamas County citizens. Clackamas County is taking important steps to reduce risk and prevent loss from these hazards by partnering with the University of Oregon to develop the Clackamas County Natural Hazards Mitigation Plan.

Mitigation is the development of activities such as education, outreach, planning and community partnerships that are designed to reduce or eliminate impacts resulting from natural hazards. The goal of the Plan is to make Clackamas County a more disaster-resistant community by fostering partnerships among various agencies and the public.

You can participate in the development of the plan (and implementation of mitigation strategies) by participating in the second **Natural Hazards Mitigation Workshop** on **July 23rd** from **7 pm to 9 pm** at the **Sunnybrook Auditorium** (9101 SE Sunnybrook Blvd.). You will have an opportunity to review the current activities recommended in the plan, and discuss potential mitigation projects and activities designed to reduce losses in particularly vulnerable areas in Clackamas County.

To RSVP, or for more information about the public workshop, contact the Clackamas County Emergency Management Office at **503-723-4848**, email **Cindykol@co.clackamas.or.us**, or write to: Clackamas County Emergency Management, 2200 Kaen Road, Oregon City, Oregon.

“Beavercreek... Through the Looking Glass”

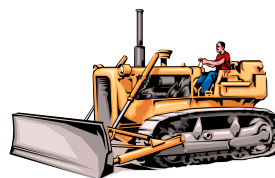
This is Part I of a series of articles on the history of the Beavercreek area. Written by Jack Watts, whose family were some of the early settlers of the community. This history is reprinted from his original manuscript that had until now never been published, by permission of Gordon Watts! We dedicate this series to a man and his love of the Beavercreek countryside who took the time to stop, look, listen and capture for all, his remembrances! The Editor.

--- ABOUT OUR NAME ---

On the eastern fringe of our community lies the Abernathy Canyon with its creek of the same name. The Abernathy Creek wends its way generally in a northern flow adding its contribution to the Willamette River at Oregon City, Oregon. Along the western rim of this canyon a number of springs fan out from north to south, each merging and contributing its flow to what forms the Beaver Creek. Other springs form small rills and streams which also feed Beaver Creek as it flows through our community meandering in a general westerly direction through fields, meadows, and wooded glades to, in turn, contribute its output into the Willamette River near New Era, located on U.S. Highway 99E south of Oregon City.

Every stream has lessons to teach, having a magnetic attraction for all, especially so to the "small fry" who are curious and love to explore and become excited as they discover the strange creatures such as crawdads, minnows, etc. They soon learn how fragile these creatures are as they carry them home in a tin can! It doesn't take them long to become aware of the more desirable fish that lurk below the surface, perhaps under the bank, and soon they cut a hazel pole, tie some string to it, and attach a bent pin upon which to impale a fat worm as a tasty and tempting morsel for bait. We all know of those who have grown up and acquired their

Help Wanted !



**Heavy
Equipment
Operators**

The Community Park needs you!!

For more information

Beavercreek Charitable Trust 503-632-0228

Dee-J's Harvest Moon



Plants · Produce · Gift Shop

26600 S. Hwy 213
P.O. Box 826
Mulino, OR 97042

Dee-J Hamilton
503-829-2101
Fax: 503-829-6119



Dee-J Hamilton, Owner

• Fresh Local Produce Arriving Daily

Remember... July is Berry Time!

Examples of our everyday low prices...

Mushrooms - \$1.99/lb.

2 lbs. of Bananas - \$1.00

English Peas - \$1.49/lb.

15 lb. Russet Potatoes - \$2.95

Walla Walla Sweets are in

5 lbs. Carrots - \$1.99

Tomatoes - \$.99/lb.

Local Bing Cherries \$1.66/lb.

Local Berries Are In... call to order your quantity:

Boysenberries

Blueberries

Marionberries

Sylvanberries

Black Raspberries

Raspberries

Strawberries

ROSE TRELLISES

\$25 each with Coupon

Coupon Good July 1, - July 31,

Rose Trellises (makes a great gift)

Locally Crafted and Sturdy - trimmed in gold metal

Choose from 4 colors (purple, white, green & blue)

Regularly \$29.95

Fresh Cut Roses - \$7.99/Doz.

2% Milk - 1.99/Gallon

**METAL
ART
20% Off**

Dee-J has added
**Cicely Mary Barkers'
Flower Fairies**

COW PARADE COWS

10% Off with Coupon

Coupon Good July 1, - July 31, 2002

Wizard of OZ
Cow Parade Collection
Coming in August
Reserve Yours NOW!

Senior Alert!

Senior Farmers Market Nutrition Coupon Program Starts June 1st

skills along the banks of our local streams, and who in later life have traveled to the coastal streams and creeks, to mountain lakes, to eastern Oregon's famous trout rivers, and to the man-made lakes behind our dams. These fishermen have developed quite a vocabulary, understood by only another fisherman as they describe, as much by hand movements as words, the size and kind of that "BIG ONE" that got away!

We share the Beaver Creek name in common with many other streams in other counties of our State. It has been said that these creeks were so named because beavers were so plentiful in the early days, but were extensively trapped, probably accounting for so many Beaver Creeks and now so few beaver.


It is thought that every county in Oregon has its Beaver Creek, but at least ours has the distinction of being the only one to have a Beavercreek, Oregon Post Office. In order to accomplish this, we had to unite the Beaver and Creek into one word. A considerable amount of trouble was encountered in establishing the name officially. Beavercreek is located approximately six and one-half miles southeast of Oregon City, Oregon with an elevation of 528 feet. Just as the waters have passed beneath the bridges on the un-erring rendezvous with the great Pacific Ocean, time also has marched on; and as the years have rolled by, a story unfolded. This is our attempt to capture the story the years have revealed.

Here Ends Part I of "Beavercreek... Through the Looking Glass." Next month's installment will be "The Beaver Creek School." The Editor



The "Gang" at Beavercreek Auto Salvage would like to say "Thank You" to the people of the Beavercreek community for their support during their first year! **Thank You!!!**

Singing Festival Well Attended



The 67th Annual Gymanfa Ganu, aka Singing Festival, was held at the Bryn Seion Welsh Church on Sunday, June 23, 2002. The Festival which began after the morning worship service ended around 2:00 p.m. At this time those attending who wished to went over to the Beavercreek Grange for a tea. There was a long table stretching the length of the room packed with all sorts of delectibles.

Everything tasted wonderful and was quite filling. This



Do you need temporary help for the Spring?
Do you need staff for your business?
 You can place an ad in the Bulletin for \$1.50/ issue.
 Call Marsha at 503-632-3572 or Sharon at 503-632-6525 and leave a message and they will get back to you

is a good thing since at 5:00 p.m. the evening singing session began. I don't read or speak Welsh so this was quite an experience for me, but I was made to feel right at home and gave it my best shot with a lot of la-la-la-ing when the Welsh verses were sung.

I have to admit however, that this was the first time my poor vocal chords have had this much of a work out in a very long time and I hope no one noticed me bouncing from Alto to Baritone and back as the mind was willing, but the voice was on auto pilot. Four part harmonies are a lot of fun, but it sure keeps you busy to say the least.

I had a very good time and the generosity of the people who attended as well as those conducting the Festival was just wonderful. I'll definately have to do this again next year. The Editor

Beavercreek CPO Spotlight

The June meeting of the Beavercreek CPO was held on Wednesday, June 26, 2002, at the Beavercreek Grange on Kamrath Rd. The meeting began at 7:00 p.m. with 20 members and guests in attendance.

There was no guest speaker.

Members who attended the Metro Outreach Program for the Urban Growth Boundary 2040 Plan Workshop held on June 25th reported on what transpired during the evening.

There were 7 members of the Beavercreek CPO who attended the workshop that drew between 350 and 400 local residents.

Also discussed was the Countys priority list. Specifically the way the building codes are implemented.

Next month the guest speaker will be Ken Spiegel, manager of the Countys Community Environment department, who will discuss the Countys priority list and its implementation regarding the building codes mentioned above.

The next meeting of the CPO will be held on Wednesday, July 24, 2002, at the same place and time. If you need more information, please call 503-632-8370 and leave a message.



Beavercreek Auto Salvage



Gary Hines & Jerry Cook Sr.
New Ownership

22675 S. Beavercreek Rd
 Beavercreek, Or 97004

503-632-3338

Lots of good used parts to choose from
Please call us to remove your unwanted vehicles
Also accepting scrap metal

Booster Happenings

The Beavercreek Boosters held their "Burgers and Bingo" fundraiser at the Corner Park on Saturday, June 29, 2002. Luckily the weather cooperated at the last minute. The event was open to the whole family with special bingo games for the children, bingo prizes, a raffle and plenty of food and refreshments.

The horse carousel which was scheduled to be at the event for the pony rides was unfortunately not able to attend. It is planned that they will be at the Burger & Bingo which is to held in August 10 at the same location.

Grange Goings On

The public is cordially invited to attend an open house hosted by the Beavercreek Grange on Saturday, July 13, 2002.

There will be a potluck beginning at 6:30 p.m. followed by an open meeting at 7:30 p.m.

The public is encouraged to attend and learn more about the Grange. For more information, please call David Porter at 503-654-2556.



Discover Nature With Your Children

Discover nature with your children in the ELC Seedlings classes at the John Inskeep Environmental Learning Center at Clackamas Community College.

ELC Seedlings classes are designed especially for 3 to 5 year old children accompanied by an adult. Taught by Savina Darzes, the classes include fascinating facts, a craft, special snack, tunes, tales and other surprises revolving around a different nature topic.

The summer line up is as follows:

- *Radical Reptiles!* Thursday, July 18, 10:00 -

11:30 a.m. Turtles, lizards and snakes, oh my! Children will delight in finding out about these scaly, cold-blood creatures.

- *Terrific Trees!* Tuesday, July 30, 10:00 - 11:30 a.m. From trunk to branches to leaves, children will discover fascinating facts and complete a tree craft.

- *Flutter By Butterfly!* Wednesday, August 14, 10:00 - 11:30 a.m. Explore the world of these colorful creatures.

- *Spiders!* Saturday, August 31, 10:00 - 11:30 a.m. Itsy bitsy spiders crawling all about! Take a look at these eight-legged, multi-eyed creatures and complete a spider craft.

There is an \$8 fee for each class, and active participation by an adult is required. Classes take place rain or shine. To register contact the Oregon City Community School at 503-657-2434. For more information about classes at the ELC, call 503-657-6958, ext. 2351.

Carus CPO Spotlight

the June meeting of the Carus CPO took place on Thursday, June 13, 2002, at the Beavercreek Christian Church on Hwy 213. The meeting began at 7:00.

There is no news to report this month as there were no land-use issues brought before the CPO for consideration.

The next meeting of the CPO will be held on Thursday, July 11, 2002, at the same time and place.

Crete A Backyard Habitat Workshop July 16

Instructor Nancy Wallwork leads this Curious Naturalist class that looks at wildlife habitat in the backyard. "Create a Backyard Habitat" will take place from 6:30 to 8:30 p.m. on Tuesday, July 16, in the John Inskeep Environmental Learning Center at Clackamas Community College.

The class will include a slide show of some of the common wildlife found in the backyard, and participants will discover how to create a habitat in four easy steps. Curious Naturalist classes are geared for children from 6 to 12 years old accompanied by a parent.

The fee for the class is \$5 per family. To register contact the Oregon City Community School at 503-657-2434. For more information about classes at the ELC, call 503-657-6958, ext. 2351.

CCC Offers College Success Workshops

Is it time to brush up on your study skills? Clackamas Community College will offer a series of weekly College Success Workshops on Mondays. These free workshops will take place from noon to 1:00 p.m. in the Skylight Room near the cafeteria in the Bill Brod Community Center.

The College Success Workshop schedule includes:

- July 1 - **Reading Skills:** Find the tricks to better textbook comprehension.
- July 8 - **Project Management:** Discover the easy way to manage homework.
- July 15 - **Note Taking Skills:** Write class notes in a user-friendly format.
- July 22 - **Stress Management:** Gain some great insights on reducing stress.
- July 29 - **Test Taking Skills:** Helpful tips to improve test scores.

One free credit is available by arranging an additional four hours with the instructor. It is possible to register at the workshop. There is a \$6 fee for materials. For more information, call the Counseling Department at 503-657-6958, ext. 2213.

Burgers and Bingo at the "Corner Park"

Bingo and food for the whole family

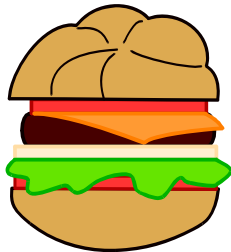
Burgers, Hot dogs and all the goodies!

2:00 p.m. - 6:00 p.m.

Saturday, August 10, 2002

Pony rides for the children

So bring the whole family, have a lot of fun and good food... and support the Beavercreek Boosters



Beavercreek Charitable Trust

The annual meeting of the Beavercreek Charitable Trust will be held on July 10, 2002, at the Beavercreek Grange on Kamrath Rd. The meeting will begin at 7:00 p.m. and is open to the public. For more information, call the Charitable Trust Info Line at 503-632-0228.

Protect Services for Seniors and People with Disabilities by Serving on the Area Agency on Aging Advisory Council

Clackamas County Commissioners are seeking four volunteers interested in serving on the Area Agency on Aging Advisory Council. The 21-member Advisory Council's mission is to promote broad-based advocacy

SHERLOCK HOME INSPECTIONS

Licensed • Bonded • Insured
Member of NAHI & OREIA
Errors & Omission Insurance
GCB # 127192 • PCO # 143646
OGHI # 141



Ron Vandehey

Office: 632-8628
Mobile: 781-8023

necessary to protect, restore and improve a comprehensive service delivery system for seniors and people with disabilities under the Older Americans Act (OAA). Council members act in an advisory capacity to the Commissioners and Clackamas County Social Services on the administration and operation of Clackamas County Social Services Division's Aging and Disability Services.

Members of the Council are appointed by Clackamas County Commissioners, and serve a term of two years. State statute requires that half the members are over age 60 and that membership include people with disabilities. The Council meets monthly, and membership requires an additional subcommittee meeting each month. The County appointment policy calls for balance and diversity of membership in the areas of geography, gender,

- In Home Kitchen Shows
- 40% Profit Fundraisers
- Local Product Delivery
- Quality Kitchen Tools

voice mail/cell 503.201.7217
evenings 503-632-8683



Ann Vandehey

INDEPENDENT KITCHEN CONSULTANT

THE KITCHEN STORE THAT COMES TO YOUR DOOR®

interest, and experience, so the Commissioners are looking for members from all backgrounds and geographical areas of Clackamas County.

Interested individuals need to complete an application form. Applications may be completed and submitted online via the County's website, <http://www.co.clackamas.or.us/citizenin/abc/app.asp>

For an application form contact Citizen Involvement, (503) 655-8552, 906 Main Street, Oregon City. Application deadline is Friday, July 26.

For more information contact John Mullin, 503-794-8060.

