



BEAVERCREEK BULLETIN

© BCCP 2001

Volume 4, Number 8

["http://www.bctonline.com/b_bulletin_online/"](http://www.bctonline.com/b_bulletin_online/)

August 2001

Beavercreek School Playground Ready

It has been a dream for quite some time, but it is now a reality. The new playground area at Beavercreek School is finally finished.

This could not have been accomplished without the teamwork of parents and civic-minded members of the Beavercreek community working together for a common goal.

People not only donated their time, but also donated heavy equipment and their expertise to see that the children will have a better place to play.

A new play structure was purchased with the proceeds from the auction which was held at the school in April and from funds which were given to the project by Beavercreek School. The old swingset and ladder climber were repainted as well as the circles on the geodome. The large representation of the United States which is on the blacktop was also finished which will be used by teachers as a teaching aid. Also redone were all the lines for four square basketball.

This project took 400 man hours which did not include all the time spent on the telephone to coordinate the effort.

The children are already enjoying the new playground area and after the school year starts there will be a formal grand opening ceremony.

Thank You for the Kids!!!

What a wonderful thing to happen! The community coming together for their children! Thank you to all those who were involved. The Editor

Clackamas County Committee for Citizen Involvement met July 12

The Committee for Citizen Involvement of Clackamas County met July 12, 2001, from 7:15 p.m. to 9:00 p.m. at 906 Main St., Oregon City on the 2nd floor.

The proposed agenda was to include an update on planning projects, a discussion of Latino involvement, the CCI's role and representation at the County Fair.

A detailed agenda can be found on the County Web site at:

www.co.clackamas.or.us/citizenin/cci/cciaagenda.asp

The function of the Committee for Citizen Involvement is to provide opportunities for citizens to participate effectively in Clackamas County's land use

Community Calendar

Beavercreek Committee for Community Planning (BCCP)...

"As needed" basis at the Fire Station at 7:30 p.m.

Beavercreek Boosters...

3rd Wednesday at the Grange at 7:30 p.m.

Beavercreek Community Planning Org. (CPO)...

4th Wednesday at the Grange at 7:00 p.m.

Beavercreek CPO Directors Meetings...

Tuesday before 4th Wednesday at the Fire Station Ready Room 7:00 p.m.

Beavercreek Grange...

2nd Saturday at the Grange, potluck at 6:00 p.m., meeting at 7:00 p.m.

Beavercreek Lions...

1st and 3rd Saturday at the Grange at 7:30 a.m.

Boy Scout Troop #445...

Mondays at the Fire Station at 7:00 p.m.

Boy Scout Troop #139...

Mondays at the Grange at 7:00 p.m.

Carus Community Planning Org. (CPO)...

2nd Thursday at the Beavercreek Christian Church at 7:00 p.m.

Clarkes Community Planning Org. (CPO)...

1st Wednesday of each Quarter plus February & March at the Clarkes Fire Station at 7:00 p.m.

planning and decision making process. For more information call Michelle Majeski at (503) 655-8552.



Brought to you as a community service by the Beavercreek Committee for Community Planning (BCCP) and the following advertisers...

Piano Lessons



The Music Place

503-632-8367

Muriel Arndt, Instructor

24290 S. Beavercreek Rd. Beavercreek, OR 97004



CCB# 136798

ELECTRIC



J. Edward Cook
503-632-8138
Fax 632-8174




16041 S. Beaver Glen Dr. • Oregon City, OR 97045
POB 905 Beavercreek, OR 97004

Bill Atherton Speaks to CPO

The guest speaker for the May 23, 2001, Beavercreek CPO meeting was Bill Atherton, Metro Councilor for District 2. District 2 does not include the Beavercreek area, but Councilor Atherton has always been sympathetic and understanding of the plight of the Beavercreek area regarding the 2040 plan.

Metro is comprised of 3 counties and 24 cities and is the only elected regional government in the country. Metro voters adopted a Charter in 1992, but the agency still must comply with many state mandates.

"Many people believe that Metro moves the Urban Growth Boundary (UGB), but this is not completely true," Councilor Atherton points out. "The Legislature and Governor passed laws in 1995 and 1997 that forced Metro to have enough land to accommodate 20-years of forecast population growth."

Councilor Atherton pointed out another myth about growth in the region - "that 30% of the population growth is from our kids. The fact is that since 1973 the US has been at replacement level fertility, slightly more than two children per woman. Population growth is occurring because of the large number of foreign immigrants and their offspring."

Councilor Atherton also talked about Metro's parks and greenspaces programs. He noted that the focus has

been to purchase large tracts as "regional" parks. Now more and more the focus will shift toward completing pathway and stream corridor linkages - more linear parks. 10,000 people per day, or 9.6% of all daily trips in the region are by bicycle riders and those needs need to be addressed as part of a total transportation package.

Because of the 2000 census, Metro will also have its districts restructured. Also, as a result of recent Metro Charter changes, the council districts will be reduced from 7 to 6. The Council approved the new districts in June. "The new district boundaries better serve the urbanized portion of Clackamas County," he said, "but they are larger districts - the equivalent of 5 state representative districts."

Councilor Atherton discussed his "Carrying Capacity" Ordinances which he will be taking to the Metro Council in August. "The Metro Charter requires that the Council describe a process for the region to live within the land, air, water, economic and educational resources of the region." "We have to challenge the concept that growth is inevitable and that we have to accept it," stated Councilor Atherton.

Councilor Atherton believes we should challenge the idea that growth is inevitable. He is proposing a 3 point carrying capacity process:

1. Use the economic cost of infrastructure that accommodates growth as a signal on the limits to growth. "If you can't pay for it - maybe you shouldn't have it," he says. His proposal would put the question to a popular vote of whether new population growth should pay their own way without public subsidies.

2. Follow environmental laws - For example, most streams in the region do not meet the standards of the Clean Water Act. "Yet every time enforcement is proposed, pro-growth advocates complain this would stop growth." But Bill points out, "That is what standards are for - to stop something." Another example is the Endangered Species Act where the choice is between saving fish or promoting population growth, so far the choice is to continue promoting population growth.

3. Local Control - (an issue of importance to the Beavercreek community). People have a vision of their community. They live there and know better than the State, the County (or Metro) how to build it. Unfortunately, current State Law prohibits or frustrates local control of land use and zoning. Bill pointed out that we are gaining on this issue.

Councilor Atherton announced that he expects his ordinances on carrying capacity will be considered by the Metro Council during the last three weeks of August. *Submitted by Bill Atherton*



Church Directory

Beavercreek Christian Church

21949 S. Molalla Ave.
(503) 632-4218

Sunday School: 9:00 a.m.

Sunday Worship: 10:00 a.m.

Youth Group: Wednesdays at 6:42 p.m.

Marriage Enrichment Class: Sundays at 6:30 p.m.

Clarkes United Methodist Church

18773 S. Windy City Rd.
(503) 632-7778

Sunday Worship: 9:00 a.m.

Sunday School: 10:30 a.m.

United Methodist Women: 2nd Wed., 9:30 a.m.

Lower Highland Bible Church

24353 S. Ridge Rd.
(503) 632-4741

Sunday Worship: 11:00 a.m.

Sunday School: 9:45 a.m.

Mid-Week Worship: Wednesdays at 7:00 p.m.

Bundox Youth Group: Wednesdays at 7:00 p.m.

Men's Group: Thursdays at 7:00 p.m.

St. Paul's Episcopal Church

822 Washington St.
(503) 656-9842

Sunday Worship: 7:30 a.m. & 10:00 a.m.

Sunday School: 9:00 a.m.

Wednesday Evening Worship: 7:00 p.m.

AA Meetings: Wednesdays, 7:00 p.m.

**Ten O'Clock Church
aka United Church of Christ**

23345 S. Beavercreek Rd.
(503) 632-4553

Worship meetings: Sunday Mornings at 10:00 am

AA Meetings: Mondays at 7:30 p.m. open to the

Beavercreek Baptist Church

15660 S. Leland Rd.
(503) 632-7505

Sunday School: 9:00 a.m.

Sunday Worship: 10:30 a.m.

Youth: Tuesdays at 7:00 - 8:30 p.m.

College: Wednesdays at 7:00 p.m.

Ladies Bible Study: Wednesdays at 10:00 a.m.

Women's Breakfast: 1st Saturday at 9:00 a.m.

Home Fellowship: (call church for details)

Back issues available upon request
while supplies last.

**Clackamas County Official Land-Use Policy
Document on Website**

Clackamas County's Comprehensive Plan is available for users of the County's website. The Comprehensive Plan is the official land-use policy document for the County and is referred to when making decisions regarding development and other land-use issues.

The document can be found on the County's website at

www.co.clackamas.or.us

Click on Departments and then on Transportation and Development. From there click on Zoning and Planning Permits and then on the Comprehensive Plan.

The Comprehensive Plan is also available for review at the County's Sunnybrook Service Center, 9101 S.E. Sunnybrook Blvd., in Clackamas.

For more information about the document call the Clackamas County Planning Division at 503-353-4500.

Booster Happenings

Don't Forget!

5th Annual Battle of the Bands

The Beavercreek Boosters are sponsoring the "5th Annual Battle of the Bands" this year on August 25, 2001. The competition will be a one-day event open to the public. Admission is only \$3. This year it will be held at the Barclay Community Center, 817 12th St., in Oregon City.

Each band is given one 15-minute set to play the music of their choice. The bands are judged on musical ability, presentation, and originality. Three judges listen to 6-8 bands compete for first prize.

For further information please contact Cheryl Boffard at 503-632-7782 or e-mail at info@beavercreek.org.

Beavercreek CPO Spotlight

The July meeting of the Beavercreek CPO was held on Wednesday, July 25, 2001, at the Beavercreek Grange on Kamrath Rd., at 7:00 p.m., with 14 members in attendance. There was no guest speaker.

The September meeting will include a presentation by the County to get input from the community on whether Beavercreek Cooperative Telephone Company is meeting the needs of the community in regards to their cable offerings. This is part of the process in renewing the cooperative's cable permit.

Anyone interested in giving input is encouraged to attend this meeting. It is hoped in the future to televise the meetings of the CPO on Channel 14.

The next meeting of the CPO will be held on Wednesday, August 22, 2001, at the same place and time. If you would like further information, call 503-632-8370.

EAS Fees and the True Cost of the Internet

Last month I wrote an article about our EAS fees going up and how that would affect those who dial into an internet provider outside the Beavercreek exchange. After writing the article I had someone ask me how they could find out how much time they were actually spending on the Internet each month. They wanted to try to see how that impacted the EAS fees that they pay.

To find out what your internet is actually costing you, you need to find out how many hours you are actually spending on the Internet per month. When you log onto the Internet there should be an area from the home or start page that you can look at to see how much time you were actually online. If you can not find this information yourself you need to contact the customer service or technical support people and they can help you.

Most people think that they are paying up to \$22.95/mo for unlimited service and that is all they are paying. Not

Beavercreek Grange Annual Harvest Breakfast

Sunday, September 30, 2001



8:00 - 12:00

**Adults \$5.00
Children \$3.50**

Sorry... there will be no French Toast

we switched over and never looked back.

If we had not switched Internet providers, with our current rate of use, our EAS fees would be costing us \$39.95/mo on top of the \$19.95 for a total of \$59.90. Now we only pay \$18.95 for unlimited access and that is it! What a difference! If we were a business we would be paying \$59.95/mo on top of the Internet connect fees for a total of \$79.90.

The first 3000 mins (or 50 hours) you call outside the exchange are billed at .02/min, with a \$15.00/month maximum. After that you go into Premium Access at .01/min with the maximum amount mentioned above.

I hope this makes it easier to understand. If you have questions you need to call Beaver Creek Telephone at 503-632-3113. *The Editor*



17+ Years of Helping People on the Move!
Full Time — Aggressive Service
CALL 503-702-5640

Darla Clark
Associate Broker
Residential/Rural Specialist

22008 S. Beavercreek Rd.
P.O. Box 339, Beavercreek, OR 97004 503-632-7330



Custom Built Trailors

Hitches & Wiring

Jerry Thommen
503-632-7407

true.

My husband and I are on the Internet from 120 - 150 hours per month on average. To say the least our Internet access was costing us the \$19.95/mo for unlimited Internet service plus the EAS fees which had a \$15.00 max charge each month for a total of \$34.95. We were lucky... as soon as BCT got "bctonline.com" going

Charitable Trust

The last Board meeting of the Trust was a follow-up on the wetland issue at the park. The wetland experts and The Dept. of State Lands have marked the wetland areas with blue flags. Clearing is done to the point where the topographical survey will be completed by July 27th. Burning of brush piles will have to wait until Fall. The grading will hopefully take place this Fall with plans to put in a baseball and soccer field in the Spring. As soon as the survey is done a planning session will take place. A website is being developed to record progress and will exhibit conceptual designs. *Submitted by Paul Hauer*

MAGNETIC SIGN COMPANY

magnetics • decals • business stationary
fleet graphics • site signs • graphic design

Ed and Donna LaPlante

(503) 631-4350 • cell (503) 502-6675
since 1984 e-mail: conekilr@earthlink.net

Clackamas County Approves Contract With Steve Rhodes for Interim Administrator Duties

The Clackamas County Board of Commissioners approved an employment agreement June 28, 2001 with Steve Rhodes to act as interim administrator during the search for a new county administrator. Last month Rhodes had announced his retirement effective August 31, 2001.

The agreement allows the County to take advantage of Rhodes experience in managing the County's affairs during the search process. Under the new agreement the County will employ Rhodes as a full time employee from September 1, 2001 to December 31, 2001, or until a full time replacement is hired.

Patricia Ferrell-French Attorney at Law

1869 Willamette Falls Drive
West Linn, OR 97068

Tel: 656-4154
Fax: 656-4947

"I am pleased that Steve is willing to serve as interim administrator until we have his replacement on board," said Clackamas County Board Chair Michael Jordan. "We have numerous major projects in the works such as Complete Communities, concurrency and facilities planning and his steady hand on those projects will help us keep up the momentum in the interim until a new administrator is on board." The vote was 2 to 1 with Commissioner Larry Sowa voting no. For more information call Michael Jordan at 503-655-8581.



"Beavercreek Bulletin"
and
"Beavercreek Bulletin Online"
Published monthly by the BCCP ©

Ad Rates:

\$5/mo - business card ad
\$7.50/mo - 4" x 3.25"

Call for Details...

Marsha 503-632-3572
Sharon 503-632-6525

MARK & LORRI PETERSON
Owners



Peterson's Grocery & Feed
Groceries • Feed • Deli

25760 S. Beavercreek Rd
Beavercreek, OR 97004
(503) 632-8337

Annual Booster Rummage Sale

The Beavercreek Boosters will be having their Annual Rummage Sale again this year from Friday, September 7, through Sunday, September 9, 2001, at the Corner Park.

If you have any household articles that you would like to donate to the cause it would be greatly appreciated.

The Boosters can use clean clothing, household items, and small appliances. Please... no large appliances or exercise equipment! If you would like more information on where to drop off your items or items the Boosters can use, please feel free to call either Aggie Eckert at 503-632-3494 or Sally Shaw at 503-650-6349.

Carus CPO Spotlight

The August meeting and election of officers of the Carus CPO will be held on Thursday, August 9, 2001, at 7:00 p.m. at the Beavercreek Christian Church on Molalla Ave. All members are encouraged to attend and vote for the candidate of their choice for the next term.

In August the third hearing regarding the Molalla River Reserve "gravel pit" will be held. No date available at press time. Apparently the City of Canby is not too happy since they get 90% of their water for their 14,000+ customers from the Molalla River and in 5 years they expect 58,000 customers, yet they were not notified about this land-use action. It is expected that if the "gravel pit" goes through it will cause a change in the hydrology of the Molalla River which would impact the City's water supply.

The CPO has also received an application to put a rock crusher in the quarry at Union Hall Rd., west of Hwy 213. The rock crusher would be moved to the quarry during the winter months. Neighborhood discussion of the matter is ongoing. If you have any questions please feel free to call Ariel Mars at 503-632-7037 and leave a message.

Beavercreek Bulletin Pick-up Points

Just a Reminder... the pick-up points for the Beavercreek Bulletin are:

- Petterson's Grocery & Feed in Clarkes
- Beavercreek Fire Station
- The Corner Park
- Beavercreek Cooperative Telephone Company
- Beavercreek Grocery
- Hitch 'N Post Restaurant
- Lindy's Donuts, Espresso & Soups in Berry Hill
- "Gifts and Talents" Gift Shop

Past and current "Bulletins" are also available online. Check the website out at:

http://www.bctonline.com/b_bulletin_online/

Promote Safe Bicycling and Walking as a Viable Transportation Mode by Participating on the Pedestrian/Bikeway Advisory Committee

Clackamas County Commissioners are seeking applicants for the Pedestrian/Bikeway Advisory Committee, which advises them on policies and sections of the Comprehensive Plan affecting pedestrian and bicycle facilities.

There are two openings on the committee for both adult and student members to serve for two years.

The Committee's mission is to promote and encourage safe bicycling and walking as a significant means of transportation in Clackamas County. Its goals include the development of a coordinated system of safe and convenient bikeways and walkways, the stimulation of public awareness and the examination of current and future financing options and budget strategies for bicycle and pedestrian projects.

Committee work presently includes reviewing bicycle and pedestrian project prioritization and the development of bicycle and pedestrian safety programs. The Pedestrian/Bikeway Advisory Committee meets monthly on the first Tuesday

between 6:00 p.m. and 8:00 p.m. at the Sunnybrook Service Center, Auditorium, 9101 S.E. Sunnybrook Blvd. The public is invited to attend.

Individuals interested in serving on this committee must complete an application form. In addition, they are strongly encouraged to attend the August 7, 2001, Pedestrian/Bikeway Advisory Committee meeting to get a better idea of the types of issues addressed by the committee. Applications may be completed and submitted online via the County's website:

<http://www.co.clackamas.or.us/citizenin/abc/app.htm>

For an application form contact the Strategic Communications Division, (503) 655-8552, 906 Main St., Oregon City or contact Karen Buehrig at the Department of Transportation and Development at (503) 353-4538. Application deadline is Wednesday, August 15. For more information call Karen Buehrig at (503) 353-4538.

Boosters Burgers & Bingo!

Lots of prizes!

Saturday, August 4, 2001

2:00 - 6:00 p.m.

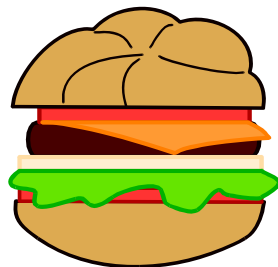
at the Corner Park

children always welcome

so...

bring the whole family

for an afternoon of fun and great food!



There will be burgers, hot dogs, chips, pop and Sno Cones!

The Boosters hope to have pony rides and possibly some vendors, but details were not available at press time!

Unique Summer Class Offerings at the Milwaukie Center

*Bead and Watercolor Classes
Feature Local Artists*

Two creative opportunities stand out from a list of art workshops offered at Milwaukie Center this summer. On Friday, Aug 24, 2001, from 9:30 a.m. to noon, local artisan Debbie McCollum will lead students in combining colorful wire and glass beads to make one-of-a-kind cuff bracelets. Fee for the session is \$20 for residents of the North Clackamas



Fresh Cut Bouquets

**\$3.00 a bunch
Road-Side Stand**

16078 S. Spangler

Parks & Recreation District and \$22 for Non-Residents. Materials extra.

A four-week watercolor workshop led by painter Bea Greening will begin in late July, meeting on July 27, Aug 10, 17 and 24th from 1:00 p.m. to 4:00 p.m. Fee for the class is \$50 for residents of the Parks District and \$55 for non-residents. Pre-register one week in advance of the start date of either class by calling Milwaukie Center at (503) 653-8100.



**What's in a name?
A lot!**

SOLD

GMAC Real Estate

The right sign at the right time ...

Waiting for the right sign to buy or sell your home? Call me, and I'll put my real estate expertise and the GMAC Real Estate Service systems to work for you. Whether your next move is across the county or across the country, I can help you realize your dream.

Craig Loughridge
REALTOR®
503-632-8258
NWHomePro.com

TRINEST GROUP INC.
GMAC Real Estate

Real Estate Brokerage License and Equal Opportunity (EEO) GMAC Home Services, Inc. 2001. Photographs © 2001. All rights reserved.

Clackamas County Approves Hike in Monthly Fees for Offenders Under Supervision

The Clackamas County Board of Commissioners has approved a \$10 per month increase in fees paid by a certain group of offenders under supervision of the Community Corrections Department. The fee hike will apply to "Active" offenders only (those medium to high-risk offenders that are under direct supervision.)

The fee increase will bring the total paid by "Active" offenders to \$45 per month. There are about 1,300 offenders in the "Active" group. Another 1,200 offenders considered "Casebank" (low-risk group) will continue to pay \$35.

The increase will be used to offset increasing costs and anticipated budget reductions.

Note persons under supervision of the Community Corrections Department include those that have



**Western
Marketing**

**Box 1158
Lake Oswego OR 97035**

503.632.7115

**Business-to-Business
Marketing and Advertising**

served prison or jail time and are on parole to complete their sentences and those sentenced to probation in lieu of jail or prison. For more information call Mark Rasmussen at 503-722-2776.

Hitch 'N Post Saloon August Calendar of Upcoming Events:

Aug 3 - 4, "Bad Motor Scooter"
Aug 10 - 11, "Rose City Rain"
Aug 17 - 18, "Wood Doctors"
Aug 24 - 25, "Probable Cause"
Aug 31 - Sep 1, "Hot Rod Lincoln"

**21950 S. Beavercreek Rd.
503-632-3190**

Clackamas County Extension Celebrates Friday Re-opening and 90 Years in Oregon

Clackamas County's office of the Oregon State University Extension Service will re-open to the public starting Friday, August 3, 2001. The office has been closed on Fridays since July 1994 when budget reductions limited clerical staff.

To commemorate the re-opening, a celebration is planned and everyone is invited. The celebration will be held at the OSU Extension Office, 200 Warner Milne Road, Oregon City at 10:00 a.m. on August 3. Displays and information about the Extension Service and educational programs in the community will be available. In addition, the celebration will feature a history of the Extension Service in Oregon, now in its 90th year.

"We are extremely excited about this opportunity to better serve the residents of Clackamas County," said Mike Bondi, Extension Forestry and Christmas Tree Agent and Staff Chairman for the office. "We are grateful for the support provided by our local County government that enables us to re-open the office to five days per week."

**Clackamas Fire Dist #1
Board Meetings
the 3rd Monday of the Month
at the Fire District Training Facility
15990 S.E. 130th Ave.
Clackamas, OR
Contact: Karen Strejc
(503) 655-8542 x 238**

**Clackamas County Commissioners
Give State of the County Address
August 22, 2001**

From Promise to Performance

The Clackamas County Board of Commissioners will deliver a State of the County address during the North Clackamas Chamber of Commerce monthly luncheon meeting Wednesday, August 22, 2001.

The meeting will be held at New Hope Community Church, 11731 SE Stevens in Clackamas. The lunch portion of the event will start about 11:30 a.m. and the Commissioners' presentation will begin around noon. A number of County departments, divisions and other organizations will also have displays at the event.

Using a theme of "From Promise to Performance," the Commissioners will talk about the accomplishments made during the past year, current needs in the community and the demands of the future in a rapidly changing County.

The Commissioners will also give an update on three topics known as "Concurrency", "Complete Communities" and "The Endangered Species Act."

"Concurrency" - A policy initiative that has a goal of assuring that infrastructure needs, such as roads, sewer and water, are in place to serve the community before or at the time development occurs.

"Complete Communities" - A project designed to outline the strategies and goals for the future of this rapidly growing county.

"Endangered Species Act" - In 1999 the National Marine Fisheries Service listed nine West Coast salmon populations as threatened under the Endangered Species Act list. The purpose of the ESA is to recover species and the ecosystems upon which they depend. Last year, County departments affected by the listings initiated significant changes in programs to incorporate salmon recovery into daily practices.

There will also be a question and answer period following the presentations.

The public is welcome to the State of the County Address event.

The Oregon State University Extension Service provides informal education and applied research to address local problems. Programs in 4-H and youth development, family development and nutrition education, agriculture and small farming enterprises, home horticulture, forestry, Christmas trees and aquatic health are all available through their office in Oregon City. For more information, call 503-655-8631.

Beavercreek Auto Salvage



**Gary Hines & Jerry Cook Sr.
New Ownership**

22675 S. Beavercreek Rd
Beavercreek, Or 97004 503-632-3338

Tires U-Pick \$1.00 Each

**Please call us to remove your unwanted vehicles
Also accepting scrap metal**

\$25.00

**All You Can Carry
Pay As You Enter
U Pull-it**

August 11-12, 2001
August 18-19, 2001

Discount Days also for engines, transmissions and rear-ends



**Do you have something
you would like to sell?**

You can place an ad in the Bulletin for \$1.50/ issue.
Call (503) 632-3572
and leave a message for Marsha
and she will get back to you

DEE-J'S HARVEST MOON
Plants & Produce
Gift Shop
26600 S Hwy 213 - PO Box 826
Mulino, Oregon 97042
(503) 829-2101 Fax (503) 829-2101

Pre-registration is suggested and there is a \$15 cost for lunch. To register call the North Clackamas Chamber of Commerce at 503-654-7777.



Julie Hoffman
Sales Associate

MAIN
PROPERTIES Inc.

(503) 632-7330

Fax: (503) 632-4354
Residence: (503) 632-6526
E-Mail: jujubee04@juno.com

22008 S. Beavercreek Rd.
P.O. Box 339, Beavercreek, OR 97004

Clackamas County Pothole Hotline on a Roll, Damage Claims Against County Down to Two Last Year

The Clackamas County Pothole Hotline is working so well that pothole-related damage claims against the County have decreased from a high of 68 in 1996-97, to just two during the Fiscal Year 2000-01. The County's Pothole Hotline was established in February 1997.

Each automobile/pothole claim costs the county roughly \$500 to investigate and administer. Most claims are denied, but in the period July 1996 to June 1997 there were 68 claims made and \$3,756 was paid out. Total cost for the period was \$37,756.

After the hotline began the claims went down dramatically. From July 1997 to June 1998 only three claims were made and \$75 paid in damages. During the next two years the number of claims totaled 15 and none were paid. This past year, two claims were made and neither was paid. Total cost for the four-year period since the hotline was established is \$9,155.

Since the hotline was established there has been 1,299 direct calls made to the hotline.

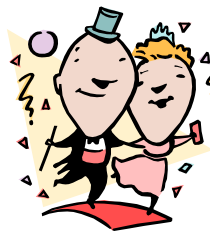
The Hitch 'N Post Restaurant
Now open under new management
Open from 7:00 a.m. to 10:00 p.m.
7 days a week
Breakfast served all day
Come in and see our new menu!!
Take-Out also available
503-632-8647 or 503-632-3190

According to Richard Koskela, road maintenance supervisor, the pothole crews have repaired over 60,000 potholes in the four-year period since the program began. A call to the hotline (or other lead) often generates a fix of more than one pothole.

When pothole hotline complaints are made, crews attempt to get to the site within two to three days during the regular work week (within hours for emergency situations.) This is most often the case even though the County has nearly 1,500 miles of roads to maintain. "Our crews are great and they are using new equipment that help make the repairs last longer and look better than in the past," he said.

The Pothole Hotline number is 503-650-3262 and is a message machine. Persons will be asked to note where the pothole is by road name, side street and/or address. For more information call Richard Koskela at 503-650-3446.

37th Anniversary Party!!



August 17 - 19th
Hitch 'n Post Parking Lot

Starts 8:00 p.m. Friday
and ends
Sunday at closing
"Wood Doctors"

Clarification

Last month there was an article about the history of the Beavercreek Committee for Community Planning, aka, BCCP. The last paragraph was mistakenly put in all caps and was worded in such a way as to misrepresent the position of the BCCP on the incorporation of the Beavercreek area. The BCCP is waiting to see how the "Complete Communities" and "Rural Reserve" issues are implemented. Only if those avenues of self governance fail and there is a threat from Oregon City or Metro, with a directive and support of the community would the BCCP proceed with the incorporation of Beavercreek. *The Editor*

Volunteers Needed!

The Oregon State Police Volunteer Group will meet at the Carus School Library on Sunday, August 5, 2001, at 4:00 p.m.

They are seeking volunteers to assist in the placement of the State Police Radar Trailer which notifies motorists of how fast they are going. Contact: Sgt. Aaron Olson at 503-731-3020 x 244 if you can help.

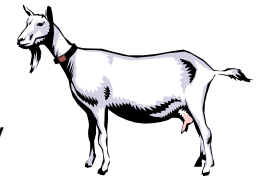
CLACKAMAS COUNTY

Pot Hole Hotline

PLEASE CALL 650-3262

☎ 24-Hour Message Line ☎

Dwarf Nubian Goats



Companion, Brush & Dairy

Wethers \$50.00

Doelings \$75.00 & Up

503-632-7037

503-632-3874

Clackamas County's "Supporting Seniors" Program Begins Accepting Registrations

The Clackamas Training Consortium is set to begin its fall 2001 session of "Supporting Seniors in Your Community." The Series of ten Wednesday morning classes will be taught September 5, 2001 through November 7, 2001.

The program is designed for anyone interested in learning more about aging issues and how to support older persons they encounter in their lives and work. Series of ten classes includes:

- 9/05/01 The Aging Process
- 9/12/01 Dementia & Depression
- 9/19/01 Problem-Solving & Behavior Management
- 9/26/01 Common Medical Issues
- 10/03/01 Medication Issues/Substance Abuse
- 10/10/01 Communication Skills
- 10/17/01 Grief, Dying & Death
- 10/24/01 Community Resources
- 10/31/01 Legal & Ethical Considerations
- 11/07/01 Caring for the Caregiver

All instructors are professionals from social services, mental health and health care organizations.

The series of ten Wednesday morning classes runs September 5, 2001 through November 7, 2001 from, 9:00 a.m. to noon. Participants may register for all ten classes for \$115 or selected classes for \$15 per class.

Classes are held on the main campus of Clackamas Community College, 19600 S. Molalla Avenue in Oregon City.

All registrations are processed by Clackamas County Social Services. Please do not contact the college for information or registration materials.

Class is size limited and pre-registration is required. To register call Linda Baker at Clackamas County Social Services, (503) 655-8768.

Joyce Dobby Crafts at Gifts & Talents Molalla Store

"Joyce Dobby Crafts" known for her vending of bead work at the "Beavercreek Bust" is now located in Molalla at the Gifts and Talents Gift Shop. You can reach her by calling 503-824-3070.

LH Bookkeeping Service

Small Business Accounts

Accounts Receivable Accounts Payable

Financial Statements

Taxes

P.O. Box 478

Oregon City, OR 97045



Reasonable Rates

503-955-4746

"Gifts and Talents Gift Shop"

Gifts, Fine Art, Collectibles

(next to the Beavercreek Grocery)

Open 7 Days a Week

11:00 a.m. - 9:00 p.m.

503-632-7432

22005 S. Beavercreek Rd., Beavercreek, OR 97004

Any Suggestions for Articles?

Any Comments?

Call 503-632-6525

